



## CITY of NOVI CITY COUNCIL

Agenda Item 5  
September 27, 2010

**SUBJECT:** Approval of Resolution authorizing participation in the Road Commission for Oakland County's 2010 Tri-Party Program for Road Improvements dedicating \$116,980 of Novi's allotment of Tri-Party finds to the Novi Road Link (Ten Mile Road to Grand River Avenue) project and the remaining \$35,997 to the preliminary engineering phase for 12 Mile Road Widening (Beck Road to Dixon Road).

**SUBMITTING DEPARTMENT:** Department of Public Services, Engineering Division *BTC*

**CITY MANAGER APPROVAL:** *[Signature]*

**BACKGROUND INFORMATION:**

Since 1985, the City of Novi has chosen to participate in the Road Commission for Oakland County's (RCOC) annual Tri-Party Program for Road Improvements. Costs for projects identified for participation are shared between three entities: the Oakland County Board of Commissioners, RCOC and the local unit of government.

In recent years, Novi has used the Tri-Party program to help fund various intersection signalization projects (Twelve Mile/Cabot, Ten Mile/Taft), as well as major road improvement projects (Grand River Bridge over CSX Railroad, Novi Road Link project from Grand River to Ten Mile). Based on fund distribution formulas, Novi's 2010 allocation totals \$152,977, with \$50,992 identified as Novi's cost share (the allocation and cost share amounts are reduced from the 2009 allocation of \$345,412).

Staff recommends that the Novi Road Link project be designated for receipt of \$116,980 of this year's Tri-Party funding. Since 2005, a total of \$1,517,556 in Tri-Party funds (which includes the 2010 allocation) has been designated to the Novi Road Link project to help fund the local match amount of \$2,735,525 for the project, which is shared by Novi and RCOC. The Novi Road Link project, which includes a bridge over the existing CSX Railroad at-grade crossing and Novi Road widening to five lanes between Ten Mile Road and Grand River Avenue, has been awarded and construction is under way.

Staff recommends that the remaining \$35,997 be designated for the preliminary engineering phase of the 12 Mile Road Widening Project (Beck Road to Dixon Road), which is scheduled for federal funding in 2011 at a total cost of \$1,653,000, to offset Novi's estimated share of \$165,500 for the project. The initial phase will include only the preliminary engineering for the project, which will evaluate feasibility and determine the right-of-way needs for a future widening of 12 Mile Road between Beck Road and Dixon Road.

The attached Resolution would formally designate the Novi Road Link project and preliminary engineering for the 12 Mile Road Widening (Beck Road to Dixon Road) project for 2010 Tri-Party funding.

**RECOMMENDED ACTION:** Approval of Resolution authorizing participation in the Road Commission for Oakland County's 2010 Tri-Party Program for Road Improvements dedicating \$116,980 of Novi's allotment of Tri-Party finds to the Novi Road Link (Ten Mile Road to Grand River Avenue) project and the remaining \$35,997 to the preliminary engineering phase for 12 Mile Road Widening (Beck Road to Dixon Road).

	1	2	Y	N
Mayor Landry				
Mayor Pro Tem Gatt				
Council Member Crawford				
Council Member Fischer				

	1	2	Y	N
Council Member Margolis				
Council Member Mutch				
Council Member Staudt				



## RESOLUTION OF PARTICIPATION 2010 TRI-PARTY PROGRAM

### CITY COUNCIL

Mayor  
David B. Landry

Mayor Pro Tem  
Bob Gatt

Terry K. Margolis

Andrew Mutch

Kathy Crawford

Dave Staudt

Justin Fischer

City Manager  
Clay J. Pearson

Director of Public Services/  
City Engineer  
Rob Hayes

**WHEREAS,** the Road Commission for Oakland County has invited the City of Novi to participate in the Fiscal Year 2010 Tri-Party Program for road improvements; and,

**WHEREAS,** the Tri-Party Program is a means to provide for improvements to County Roads with funding derived from the local units of government, the County Board of Commissioners, and the Road Commission for Oakland County; and,

**WHEREAS,** \$152,977 has been allocated for Novi with the total 2010 contribution from the City of Novi totaling \$50,992; and,

**WHEREAS,** the Novi Road Link project between Ten Mile Road and Grand River Avenue has been designated for funding in the Tri-Party Program since 2005 and is now under construction; and,

**WHEREAS,** the 12 Mile Road Widening project (Beck Road to Dixon Road) is scheduled for the preliminary engineering phase in 2011.

**NOW, THEREFORE, BE IT RESOLVED** that the Mayor and Council of the City of Novi authorize participation in the Road Commission for Oakland County's 2010 Tri-Party Program for Road Improvements and designate \$116,980 to the Novi Road Link project between Ten Mile Road and Grand River Avenue and the remaining \$35,997 to the 12 Mile Road Widening project (Beck Road to Dixon Road) preliminary engineering for funding.

### CERTIFICATION

I, Maryanne Cornelius, duly appointed Clerk of the City of Novi, do hereby certify that the foregoing is a true and complete copy of a resolution adopted by the City Council of the City of Novi at a Regular meeting held this 27th day of September, 2010.

Department of Public Services  
Field Services Complex  
26300 Delwal Drive  
Novi, Michigan 48375  
248.735.5640  
248.735.5659 fax

cityofnovi.org

---

Maryanne Cornelius  
City Clerk



March 16, 2010

Mr. Clay J. Pearson, Manager  
City of Novi  
45175 West Ten Mile Road  
Novi, Michigan 48375-3024

3/18/10  
To: Mayor & City  
Council Members  
FY

**Board of Road Commissioners**

Gregory C. Jamian  
Commissioner

Richard G. Skarritt  
Commissioner

Eric S. Wilson  
Commissioner

RE: FY 2010 Tri-Party Program

Dear Mr. Pearson:

Your participation is requested in the FY 2010 Tri-Party Program for road improvements. The fiscal year governing this program is October 1, 2009 through September 30, 2010. The Oakland County Board of Commissioners has approved a Tri-Party budget of \$1,000,000 to create a \$3,000,000 program for FY 2010. A total of \$1,500,000 will be designated for townships and a total of \$1,500,000 will be designated for cities and villages.

The distribution formula and method of calculation of Tri-Party allocations have remained the same. For cities and villages, it includes RCOC road miles and three-year average annual accidents. For townships, the most recent census population figures are combined with RCOC road miles and three-year annual accidents. The figures for these three factors (population, miles and accidents) are calculated as the individual community's percentage of the total of each factor in each type of community. For example, county road accidents in a city or village are divided by the total of all county road accidents in all cities and villages. The distribution formulas have been used for years in an attempt to most equitably distribute the Tri-Party dollars.

Separate formulas are used because population in the city/village equation would skew the results toward more densely populated cities with fewer RCOC road miles. In Townships, on the other hand, population has been used as a determining factor to prevent the distribution from being skewed toward townships with high road miles and small populations.

31001 Lahser Road  
Beverly Hills, MI  
48025

248-645-2000

FAX  
248-645-5555

TDD  
248-645-5555

www.rcocweb.org



**City / Village Formula:** 
$$\text{Community Allocation} = \frac{Ad_{cv}(Ca + Rm)}{2}$$

Where:  $Ad_{cv}$  = Total Amount for distribution to cities and villages  
 $Ca$  = Community % of total accidents on county roads in cities and villages  
 $Rm$  = Community % of total county road miles in cities and villages

(Note that accidents are an annual average for a three-year period)

**Township Formula:** 
$$\text{Community Allocation} = \frac{Ad_T(Ca + Pc + Rm)}{3}$$

Where:  $Ad_T$  = Total Amount for distribution to townships  
 $Ca$  = Community % of total accidents on county roads in all townships  
 $Pc$  = Community % of total population in all townships  
 $Rm$  = Community % of total county road miles in all townships

(Note that accidents are an annual average for a three-year period)

Although the method of calculation and the factors involved have remained the same, the data on which those calculations are based has changed.

Population data is changed only after a decennial census or if the Census Bureau issues revised numbers. The data includes the most recent counts from the 2000 Census.

As in the past, RCOC road miles change only to reflect abandonment's, transfers of jurisdiction, or the addition of new roads.

The most recent traffic accident data available from the Traffic Improvement Association of Oakland County is used. Currently, the average annual crash data from 2006 to 2008 is being used.

Your program allotment for this year is \$152,977 amount of which your share will be \$50,992. Any funds remaining from previous years or earlier projects may be added to this amount for use in 2010. You may use these funds to select a new project, continue funding a previous project, or save them to fund a future project. If you do not wish to participate in this program, please contact me as soon as possible, so your program allotment can be distributed as necessary.



The Tri-Party Program operates as follows:

- 1) Projects intended for 2010 construction must be selected and submitted with a local board or council resolution by April 2010.
- 2) Project locations and concepts must be approved by the County Board and the Road Commission for Oakland County.
- 3) Projects that cost more than the allocation may be selected if the community provides the additional funding.
- 4) Funding agreements must be executed before bids are accepted. On larger projects, a separate agreement for preliminary engineering or right of way may be executed prior to initiation of these phases.
- 5) Projects that improve road safety take precedence over other project types, i.e. congestion or drainage.
- 6) Due to the Road Commission's current road project commitments, preliminary and construction engineering may need to be provided by consultant engineers at a maximum rate of 10% and 15%, respectively, of estimated construction costs.

A schedule of events has been established as detailed below. If you are unable to meet any of the dates below, please inform me as soon as possible.

DEADLINE	ACTIVITY
April 2010	Potential project locations submitted to Programming Division for review.
May 2010	Local council resolutions and project commitments submitted for projects to be constructed in 2010.
June 2010	Project approval for Road Commission and County Board.
June – November, 2010	Design, bidding and/or construction period.

I urge you to consider your options for projects now and involve your council members early in the process. Please contact me as soon as possible for cost estimates. The closer we follow the above schedule, the more successful our 2010 Tri-Party construction season will be.



A list of suggested project locations is attached. The list indicates some project possibilities collected from local officials, citizens, police reports, accident locations, Department of Citizen Services, and Road Commission staff. The list is not in priority order and most do not yet have cost estimates. Also shown are some typical costs for comparison purposes.

In addition, a historical report of your community's Tri-Party Program participation is also attached. The report lists the projects that have been completed with their associated costs. The report also shows the allocations that have been reserved for future Tri-Party projects.

Please contact me at (248) 645-2000, extension 2266 for further discussion or assistance.

Sincerely,

A handwritten signature in cursive script that reads "Thomas G. Noechel".

Thomas G. Noechel  
Programming Supervisor

TGN/sk

2010 TRI-PARTY PROGRAM  
CITY OF NOVI  
ALLOCATION FOR 2010: \$152,977

The following list contains typical safety projects with general costs for your information. Actual project costs will vary depending on location and a preliminary concept and estimate should be requested. Below is the list of potential project sites recommended over the past year or so by citizens and officials; many of these have not been field checked.

SAFETY PROJECTS	GENERAL COSTS
Additional right turn lane at intersection	\$100,000 per approach
Approach paving – subdivision street	\$ 50,000
Approach paving – primary road	\$ 75,000
Passing lane	\$ 60,000
Widen for 150-200' center left-turn lane	\$200,000 per approach
Shoulder paving one side	\$ 45,000 per mile

POTENTIAL PROJECT LOCATIONS
-----------------------------

Grand River Avenue, Novi Road to Haggerty Road	Widen
Napier Road, Nine Mile Road to Twelve Mile Road	Pave gravel
Novi Road, Eight Mile Road to Ten Mile Road	Widen to five lanes
Novi Road, Ten Mile Road to Grand River Avenue	Widen with grade separation
Eight Mile Road, Napier Road to Beck Road	Resurface



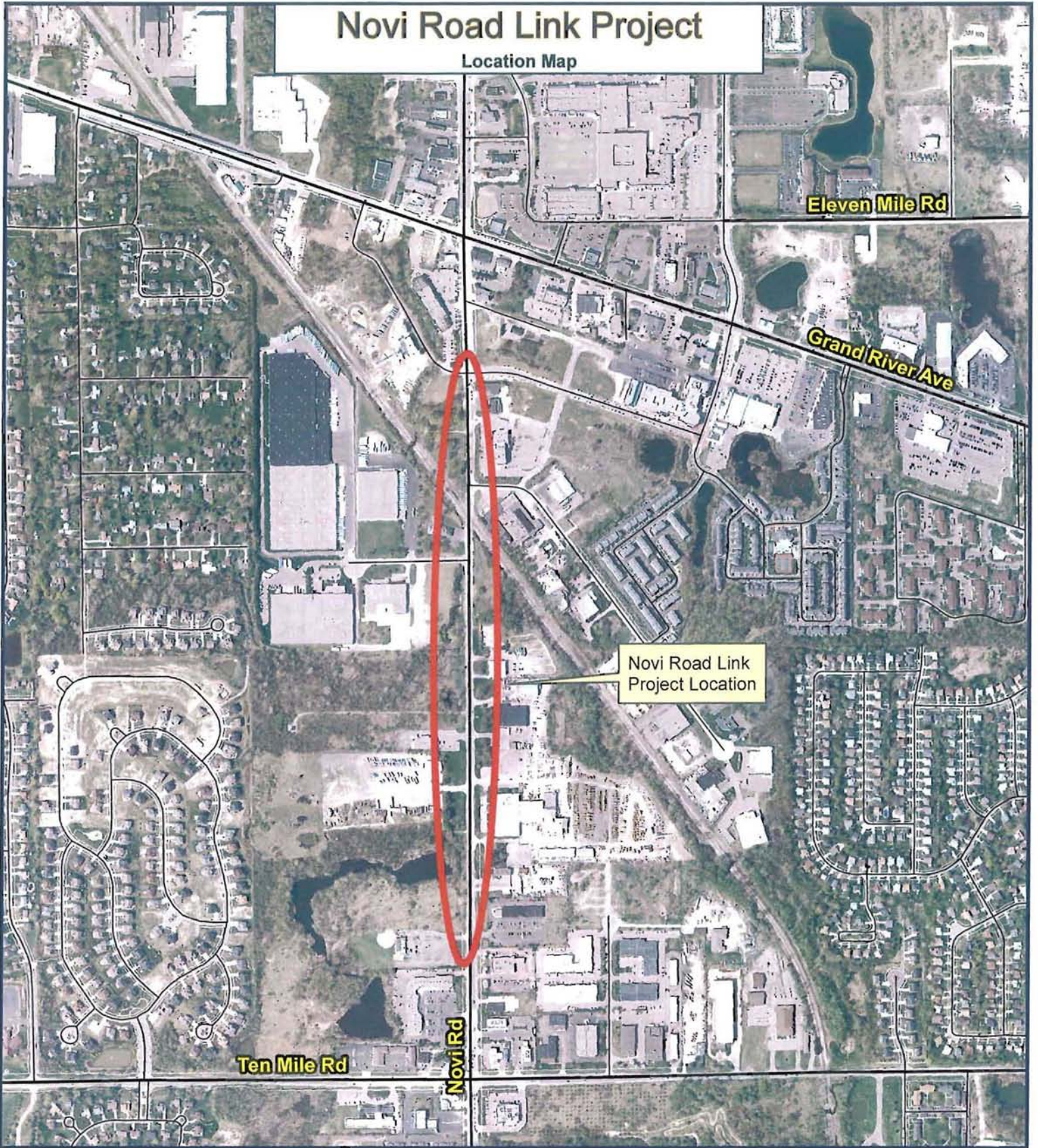
ROAD COMMISSION FOR OAKLAND COUNTY  
TRI-PARTY PROGRAM  
1980-2010

PROJECT DESCRIPTION	Date of Agrmt	PROJ. NO.	1980-85	1986-97	1998-99	2000-01	2002-03	2004	2005	2006	2007	2008	2009	2010	PROJ TOTAL
			Tri-Party	Tri-Party	Tri-Party	Tri-Party	Tri-Party	Tri-Party	Tri-Party	Tri-Party	Tri-Party	Tri-Party	Tri-Party	Tri-Party	Tri-Party
NOVI (8-Jeff Potter, 9-Kim T. Capello)															
10 Mile @ Lymwood*	C	35331	57,900												57,900
Haggerty @ Orchard Hill*	C	35131	82,000												82,000
9 Mile @ Haggerty*	C	37441	71,250												71,250
G.R. @ MeadowbrookI*	C	3/23/1994	39541	97,016											97,016
G.R. @ Beck-add WB/SS right turn lanes*	C	4/20/1989	38181	168,566											168,566
12 @ Denolsh-signal upgrade*	C	6/21/1990	40371	7,783											7,783
8 Mile (Meadowbrook-Haggerty)	C	193 & 7/31/96	40121	251,343											251,343
Haggerty (10-GR)*	C		41801	184,469											184,469
8 Mile, Novi to Meadowbrook-reconst/widen to 5 lns	C	193 & 7/31/96	42151	139,421											139,421
14 Mile @ Decker-reconst inters w/ext NB turn lanesI*	C	5/3/1995	43231	72,950											72,950
Beck/1-96/12 Mile-redesign & reconst w/new signal	C	8/16/1995	43131	20,865											20,865
10 Mile @ Taft SCATS signals*	C	1/25/2001	46201			106,893									106,893
Grand River over CSX Bridge Replacement Est final 6/06	C	4/10/2003	38853	135,510	260,148	330,464	223,571	626,745	58,119						1,634,557
12 Mile Rd @ Cabot Drive signal installationI*	C	5/24/2007	49071						135,476						135,476
Grand River, Novi to Haggerty PE		4/15/2009	49881					26,339	198,661						225,000
Novi Rd "Link", 10 Mile Rd to Grand River Ave.-CON	No Agrmnt	41531							21,273	342,106	346,373	345,412	225,000		1,280,164
future project			0	0	0	0	0	0	0	0	0	0	120,412	152,977	273,389
<b>TOTAL</b>			<b>1,289,093</b>	<b>260,148</b>	<b>330,464</b>	<b>330,464</b>	<b>626,745</b>	<b>219,934</b>	<b>219,934</b>	<b>342,106</b>	<b>346,373</b>	<b>345,412</b>	<b>345,412</b>	<b>152,977</b>	<b>4,809,052</b>

C\*means project is complete and/or has used all the available tri-party  
I\*means the project is being administered by the community

# Novi Road Link Project

## Location Map



Map Author: Brian Cobum, PE  
Date: 5/27/10  
Project: Novi Road Link  
Version #: 1.0

### Map Legend



#### MAP INTERPRETATION NOTICE

Map information depicted is not intended to replace or substitute for any official or primary source. This map was intended to meet National Map Accuracy Standards and use the most recent, accurate sources available to the people of the City of Novi. Boundary measurements and area calculations are approximate and should not be construed as survey measurements performed by a licensed Michigan Surveyor as defined in Michigan Public Act 132 of 1970 as amended. Please contact the City GIS Manager to confirm source and accuracy information related to this map.



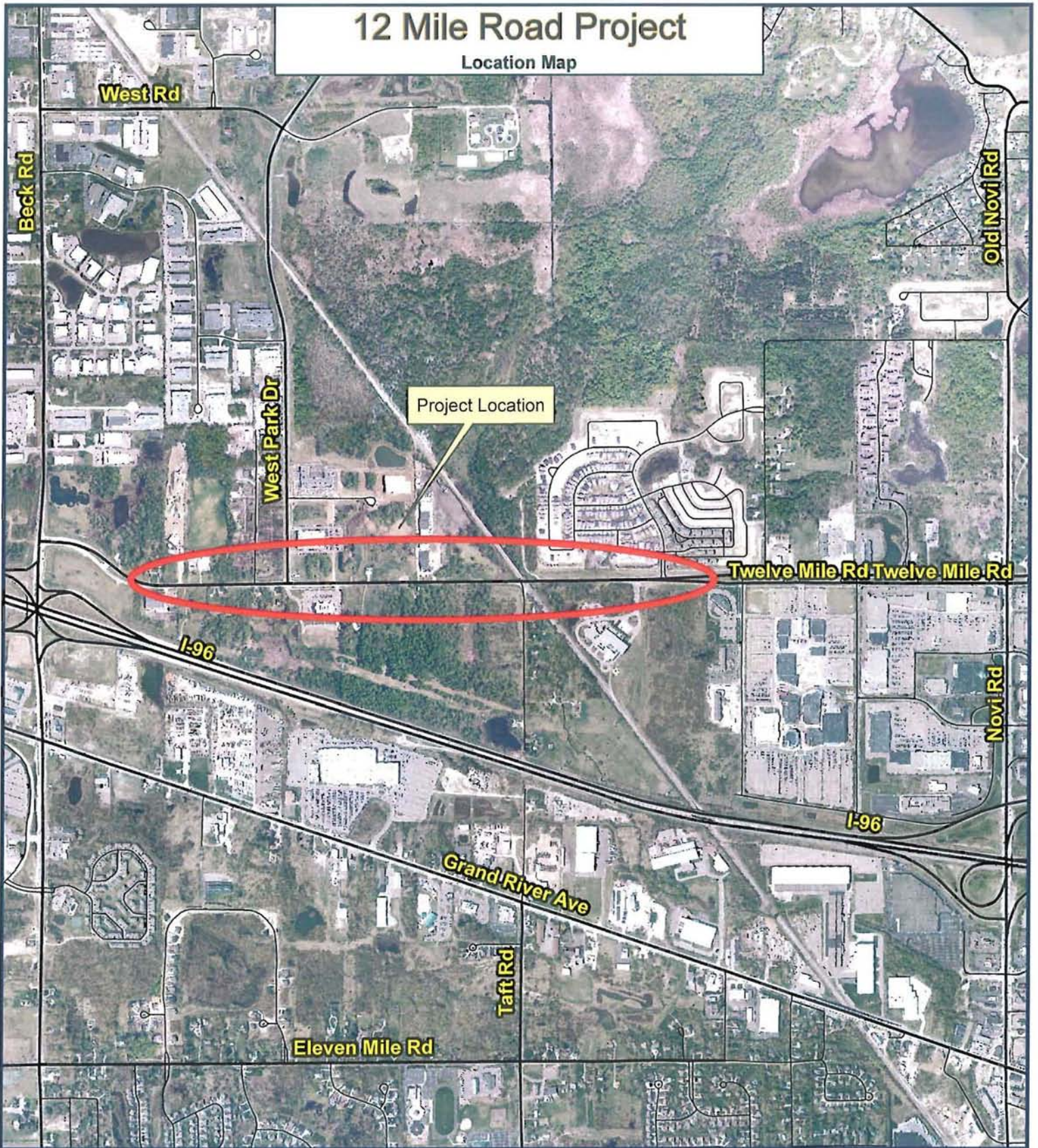
**City of Novi**  
Engineering Division  
Department of Public Services  
45175 W Ten Mile Rd  
Novi, MI 48375  
cityofnovi.org



1 inch = 800 feet

# 12 Mile Road Project

Location Map



Map Author: Brian Cobum, PE  
Date: 9/20/10  
Project: Novi Road Link  
Version #: 1.0

## Map Legend

### MAP INTERPRETATION NOTICE

Map information depicted is not intended to replace or substitute for any official or primary source. This map was intended to meet National Map Accuracy Standards and use the most recent accurate sources available to the people of the City of Novi. Boundary measurements and area calculations are approximate and should not be construed as survey measurements performed by a licensed Michigan Surveyor as defined in Michigan Public Act 132 of 1970 as amended. Please contact the City GIS Manager to confirm source and accuracy information related to this map.



**City of Novi**  
Engineering Division  
Department of Public Services  
45175 W Ten Mile Rd  
Novi, MI 48375  
cityofnovi.org

