



# CITY of NOVI CITY COUNCIL

**Agenda Item 4**  
**March 21, 2011**

**SUBJECT:** Approval to award a construction contract for the South Lake Drive/Old Novi Rd/13 Mile Intersection Improvements project to Pro Line Asphalt Paving Corp., the low bidder, in the amount of \$105,626.

**SUBMITTING DEPARTMENT:** Department of Public Services, Engineering Division *BTC*

**CITY MANAGER APPROVAL:**

*R24*

<b>EXPENDITURE REQUIRED</b>	<b>\$90,838</b> Intersection Improvements <b>\$14,788</b> 13 Mile Pathway Gap <b>\$105,626</b> Total
<b>AMOUNT BUDGETED</b>	<b>\$152,000</b> Intersection Improvements <b>\$25,000</b> 13 Mile Pathway Gap <b>\$177,000</b> Total
<b>LINE ITEM NUMBER</b>	<b>204-204.00-863.106</b> Intersection Improvements <b>204-204.00-974.419</b> 13 Mile Pathway Gap

**BACKGROUND INFORMATION:**

This project involves improvements to the intersection of South Lake Drive, Old Novi Road, and 13 Mile Road, which includes:

- Removal of the existing but now unwarranted traffic signal (replaced with the three-way stop that is currently in place).
- Reconfiguration of the South Lake Drive approach to better accommodate large vehicles (e.g., school buses and fire trucks).
- Installation of a sidewalk to fill in a gap along the south side of 13 Mile between the intersection and Martin Ave (segment 15 in the Pathway & Sidewalk Prioritization Analysis and Process report)

The final design of the intersection improvements incorporates the suggestions provided by concerned residents in the area at a Public Information Meeting that was held in October 2010. A location map has been enclosed for reference.

Five bids were received and opened on March 9, 2011 following a public bid solicitation period. The lowest bidder is Pro Line. Pro Line's bid is recommended as being in the best interest of the City as it is responsive (i.e., Pro Line has complied with all requirements of the bidding instructions) and it is the lowest price. (OHM's award recommendation letter including the bid tabulation dated March 10, 2011 is attached.) A summary of the five bids is as follows:

Contractor	Total Bid Price
<b>Pro Line</b>	<b>\$114,851</b>
Al's Asphalt	\$131,617
ABC Paving	\$136,663
Florence Cement Co.	\$144,654
Cadillac Asphalt	\$184,823

The project was included in the FY2010-11 capital improvement program in the budgeted amount of \$177,000, of which \$16,349 was awarded for design engineering, \$105,626 is now being recommended for award to Pro Line for construction, and \$17,221 is also recommended for award to OHM for construction engineering services (a separate item on this agenda) for total contract awards in the amount of \$139,196.

Construction is scheduled to begin in May 2011 and completion is anticipated by August 2011.

**RECOMMENDED ACTION:** Approval to award a construction contract for the South Lake Drive/Old Novi Rd/13 Mile Intersection Improvements project to Pro Line Asphalt Paving Corp., the low bidder, in the amount of \$105,626.

	1	2	Y	N
<b>Mayor Landry</b>				
<b>Mayor Pro Tem Gatt</b>				
<b>Council Member Fischer</b>				
<b>Council Member Margolis</b>				

	1	2	Y	N
<b>Council Member Mutch</b>				
<b>Council Member Staudt</b>				
<b>Council Member Wrobel</b>				

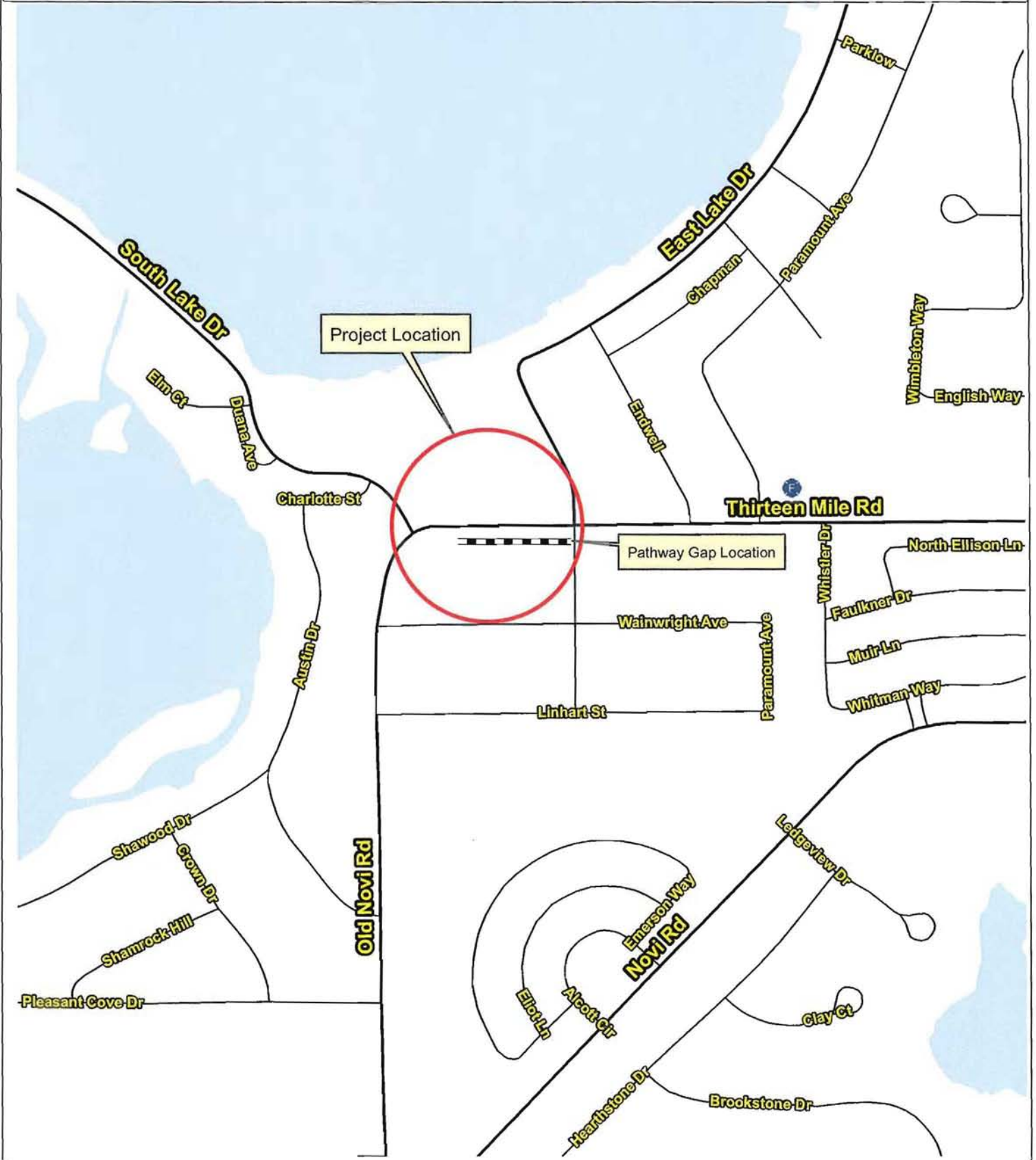
**MAP INTERPRETATION NOTICE**

Map information depicted is not intended to replace or substitute for any official or primary source. This map was intended to meet National Map Accuracy Standards and use the most recent, accurate sources available to the people of the City of Novi. Boundary measurements and area calculations are approximate and should not be construed as survey measurements performed by a licensed Michigan Surveyor as defined in Michigan Public Act 132 of 1970 as amended. Please contact the City GIS Manager to confirm source and accuracy information related to this map.

# City Of Novi



## South Lake Dr/Old Novi Rd/13 Mile Rd Intersection Improvements Location Map



March 10, 2011

**City of Novi**  
26300 Delwal Drive  
Novi, MI 48375



Attention: Ben Croy, P.E. Engineer

**Regarding: Old Novi Road, 13 Mile Road & South Lake Drive Intersection Improvement  
Recommendation of Award  
OHM Job # 0163-10-0120**

Dear Mr. Croy:

Sealed bids for the Old Novi Road, 13 Mile Road & South Lake Drive Intersection Improvement Project were received and publicly read aloud on Wednesday, March 9, 2011. Proposals were received from five (5) bidders. The five (5) bidders are as follows:

<b>Contractor</b>	<b>Amount</b>
Pro-Line Asphalt Paving Corp.	\$ 114,850.63
Al's Asphalt	\$131,617.05
ABC Paving	\$136,663.75
Florence Cement Co.	\$144,654.35
Cadillac Asphalt	\$ 184,823.60

The Engineer's Opinion of Probable Construction Cost was estimated to be \$150,000.

The project scope consists of rehabilitation of the intersection pavement, installation of ADA sidewalk ramps and construction of sidewalk along 13 Mile Road. The work to be done under this Contract includes the furnishing of materials, equipment, and labor necessary to complete the rehabilitation work, as well as all necessary restoration in accordance with the specifications.

Pro Line Asphalt Paving Corporation, located in Washington, Michigan, is the apparent lowest responsive & responsible bidder for this project. They have positive references from the City of Plymouth, the City of Troy and Lathrup Village. Based on our findings, we recommend award of this contract to Pro-Line Asphalt Paving Corp. in the amount of \$105,626 (total base price of \$114,851 less the Crew Day total of \$9225), per the unit prices bid for the project.

If you have any questions please do not hesitate to give our office a call at (734) 522-6711.

Sincerely,  
**ORCHARD, HILTZ & McCLIMENT, INC.**

A handwritten signature in black ink, appearing to read "Jessica L. Katers", is written over a horizontal line.

Jessica L. Katers, P.E.

**Old Novi Road, 13 Mile Road & South Lake Drive Intersection Improvements  
City of Novi**

Tabulation for Bids Received on March 10, 2011  
OHM Job No.: 0163-10-0121

Pro-Line Asphalt Paving Corp  
11797 29 Mile Road  
Washington, MI 48095  
Phone: (586) 752-7730

Al's Asphalt Paving Co., Inc.  
25500 Breast  
Taylor, MI 48180  
Phone: (734) 946-1880

ABC Paving Company  
2650 Van Horn Road  
Trenton, MI 48183  
Phone: (734) 676-2020

Item No.	Description	Estimated Quantity	Unit		Unit		Unit	
			Price	Amount	Price	Amount	Price	Amount
1)	Mobilization, Max. \$5,000	1 LS	\$5,000.00	\$5,000.00	\$4,500.00	\$4,500.00	\$5,000.00	\$5,000.00
2)	Audio Video Route Survey	1 LS	\$1,082.36	\$1,082.36	\$1,025.00	\$1,025.00	\$1,100.00	\$1,100.00
3)	Curb and Gutter, Rem	242 Ft	\$5.23	\$1,265.66	\$9.00	\$2,178.00	\$9.35	\$2,262.70
4)	Pavt, Rem	156 Syd	\$7.44	\$1,160.64	\$11.00	\$1,716.00	\$7.25	\$1,131.00
5)	Sidewalk, Rem	223 Syd	\$3.06	\$682.38	\$11.00	\$2,453.00	\$3.60	\$802.80
6)	Subgrade Undercutting, Type II (Modified)	100 Cyd	\$34.82	\$3,482.00	\$30.00	\$3,000.00	\$52.00	\$5,200.00
7)	Subgrade Undercutting, Type II (Special)	30 Cyd	\$35.14	\$1,054.20	\$35.00	\$1,050.00	\$52.00	\$1,560.00
8)	Clearing & Earthwork, Bicycle Path/Sidewalk	1 LS	\$1,770.31	\$1,770.31	\$5,250.00	\$5,250.00	\$5,000.00	\$5,000.00
9)	Erosion Control	1 LS	\$424.75	\$424.75	\$1,500.00	\$1,500.00	\$200.00	\$200.00
10)	Aggregate Base, 8 inch	20 Syd	\$10.56	\$211.20	\$11.00	\$220.00	\$25.00	\$500.00
11)	Maintenance Aggregate, 21AA	50 Ton	\$18.70	\$935.00	\$22.00	\$1,100.00	\$44.00	\$2,200.00
12)	Culv, Cl A, CSP, 12 inch	8 Ft	\$30.29	\$242.32	\$40.00	\$320.00	\$45.00	\$360.00
13)	Culv End Sect, Metal, 12 inch	1 Ea	\$127.48	\$127.48	\$200.00	\$200.00	\$285.00	\$285.00
14)	Dr Structure Cover, Adj, Case 2	5 Ea	\$515.43	\$2,577.15	\$350.00	\$1,750.00	\$380.00	\$1,900.00
15)	HMA, 3C, 2 inch	2040 Syd	\$7.06	\$14,402.40	\$8.40	\$17,136.00	\$9.65	\$19,686.00
16)	HMA, 4C, 2 inch	2040 Syd	\$7.35	\$14,994.00	\$8.40	\$17,136.00	\$10.00	\$20,400.00
17)	HMA, 4C, 2 inch, Driveway	16 Syd	\$29.26	\$468.16	\$12.00	\$192.00	\$33.00	\$528.00
18)	HMA, 3C, 2 inch, Driveway	16 Syd	\$29.26	\$468.16	\$12.00	\$192.00	\$29.00	\$464.00
19)	Cold Milling HMA Surface, 4"	1984 Syd	\$2.37	\$4,702.08	\$4.00	\$7,936.00	\$4.20	\$8,332.80
20)	Curb and Gutter, Conc, Det F2	305 Ft	\$14.99	\$4,571.95	\$16.25	\$4,956.25	\$18.75	\$5,718.75
21)	Curb and Gutter, Conc Det F2R (MOD)	144 Ft	\$14.98	\$2,157.12	\$16.25	\$2,340.00	\$18.75	\$2,700.00
22)	Sidewalk, Conc, 4 inch	1807 Sft	\$3.66	\$6,613.62	\$3.70	\$6,685.90	\$3.85	\$6,956.95
23)	Sidewalk, Conc, 6 inch	50 Sft	\$4.38	\$219.00	\$4.00	\$200.00	\$3.95	\$197.50
24)	Sidewalk Ramp, ADA	795 Sft	\$3.88	\$3,084.60	\$4.20	\$3,339.00	\$4.65	\$3,696.75
25)	Detectable Warning Surface	86 Ft	\$27.76	\$2,387.36	\$31.50	\$2,709.00	\$40.50	\$3,483.00
26)	Bicycle Path, HMA, 13A, 3 inch, 2 Lifts	95 Syd	\$17.22	\$1,635.90	\$21.00	\$1,995.00	\$18.80	\$1,786.00
27)	Bicycle Path, Aggregate, 21 AA Limestone, 4 inch	110 Syd	\$5.88	\$646.80	\$6.00	\$660.00	\$13.00	\$1,430.00
28)	Pavt Mrkg, Rem	1 LS	\$2,181.37	\$2,181.37	\$2,065.00	\$2,065.00	\$2,200.00	\$2,200.00
29)	Permanent Sign	5 Ea	\$333.03	\$1,665.15	\$315.00	\$1,575.00	\$335.00	\$1,675.00
30)	Pavt Mrkg, Ovly Cold Plastic, 6 inch, Crosswalk	192 Ft	\$4.05	\$777.60	\$3.80	\$729.60	\$4.00	\$768.00
31)	Pavt Mrkg, Ovly Cold Plastic, 24 inch, Stop Bar	53 Ft	\$15.26	\$808.78	\$14.50	\$768.50	\$15.00	\$795.00
32)	Pavt Mrkg, Ovly Cold Plastic, Rt Turn Only	1 Ea	\$216.48	\$216.48	\$205.00	\$205.00	\$225.00	\$225.00
33)	Pavt Mrkg, Sprayable Thermopl, 4 inch, Yellow	2087 Ft	\$0.94	\$1,961.78	\$0.90	\$1,878.30	\$1.00	\$2,087.00
34)	Sign, Remove and Reset	2 Ea	\$111.01	\$222.02	\$105.00	\$210.00	\$125.00	\$250.00
35)	Traffic Maintenance and Control	1 LS	\$7,038.12	\$7,038.12	\$7,100.00	\$7,100.00	\$8,000.00	\$8,000.00
36)	Site Landscaping	1 LS	\$5,789.24	\$5,789.24	\$5,300.00	\$5,300.00	\$5,600.00	\$5,600.00
37)	Topsoil, Seed and Mulch, 3 inch	775 Sft	\$3.21	\$2,487.75	\$2.50	\$1,937.50	\$4.00	\$3,100.00
38)	Conduit, Schedule 40, 4 inch	130 Ft	\$25.70	\$3,341.00	\$24.30	\$3,159.00	\$3.75	\$487.50
39)	TS, Span Wire Mtd, Rem (MOD)	1 LS	\$2,769.74	\$2,769.74	\$2,650.00	\$2,650.00	\$600.00	\$600.00
40)	Crew Days	* Day	\$615.00	\$9,225.00	\$615.00	\$12,300.00	\$615.00	\$7,995.00
	*Pro-Line 15 days			\$114,850.63		\$131,617.05		\$136,663.75
	*Al's Asphalt 20 days							
	*ABC Paving 13 days							

**Other Bidders:**

Florence Cement Company	\$144,654.25
Cadillac Asphalt LLC	\$184,823.60