



CITY of NOVI CITY COUNCIL

**Agenda Item 6
August 27, 2012**

SUBJECT: Approval to award a construction contract for the 2012 Pathway Gap and Americans with Disabilities Act Compliance Program to Koala-T Construction, the low bidder, in the amount of \$184,878.

SUBMITTING DEPARTMENT: Department of Public Services, Engineering Division *PSC*

CITY MANAGER APPROVAL: *[Signature]*

EXPENDITURE REQUIRED	\$ 52,634 (Meadowbrook Rd Pathway) \$ 99,089 (Taft Rd Pathway) <u>\$ 33,155</u> (ADA Compliance Program) \$184,878 TOTAL
AMOUNT BUDGETED	\$119,100 (Meadowbrook Rd Pathway) \$108,600 (Taft Rd Pathway) \$ 0 (2011-12 ADA Compliance Program) \$227,700 TOTAL for Engineering and Construction
APPROPRIATION REQUIRED	\$11,000 (Taft Rd Pathway) <u>\$45,755 Rollover from FY11-12</u> (ADA Compliance Program) \$56,755 TOTAL Rollover from FY11-12
LINE ITEM NUMBER	204-204.00-974.426 (Meadowbrook Rd Pathway) 204-204.00-974.427 (Taft Rd Pathway) 204-204.00-805.003 (ADA Compliance Program)

BACKGROUND INFORMATION:

The 2012 Pathway Gap Program includes two segments: segment #36 along the west side of Taft Road between Grand River and Eleven Mile (some portions already completed by developments), and segment #144 along the west side of Meadowbrook between Grand River and Cherry Hill. The completion of these segments will result in continuous pathway routes connecting to larger pathway networks in each area. A location map for each segment has been included for reference.

This project also includes the first year of the Americans with Disabilities Act (ADA) Compliance Implementation, and will include improvements to sidewalk ramps and address other sidewalk defects along Meadowbrook Road at the intersections of Thirteen Mile and Brownstone Drive, and also at the entrance for Meadowbrook Elementary. The ADA Compliance Transition Plan, adopted in March 2011, provides a long-term plan for bringing the City's public sidewalks and other related facilities into compliance with ADA requirements. This annual program addresses high priority areas (e.g., high pedestrian usage, and areas where pathway barriers exist). These locations were selected because they are part of the heavily-used walk-to-school route to Meadowbrook Elementary.

During the design of the Taft Road pathway segment, staff decided to approach the Sri Venkateswara Temple development staff to coordinate construction because a segment

of pathway they are responsible for bisects the City's project. Since the temple was responsible for a small section of boardwalk, and the City's project also included boardwalk (a much longer section), staff proposed that the City construct the entire boardwalk segment, and that the Temple provide a payment equal to the value of its section. This would ensure that the boardwalk will have a uniform appearance and the entire segment will be built with the same materials. The Temple representatives agreed with the coordination and have submitted a payment of \$8,900 for construction of the section of the boardwalk included on the approved site plan, which will now be completed by the City's contractor.

Five bids were received and opened on August 15, 2012 following a public bid solicitation period. The lowest bidder is Koala-T Construction. Koala-T's bid is recommended as being in the best interest of the City as it is responsive (i.e., Koala-T has complied with all requirements of the bidding instructions) and it is the lowest price for the selected option. (SDA's award recommendation letter including the bid tabulation dated August 16, 2012 is attached.) A summary of the five bids is as follows:

Contractor	Meadowbrook Path Segment*	Taft Path Segment*	ADA Compliance*	Total Bid Price*
Koala-T Construction	\$55,708.77	\$112,618.72	\$35,614.83	\$203,942.32
Italia Construction	\$55,135.25	\$166,521.50	\$44,082.68	\$265,739.43
Warren Contractors and Development	\$116,004.75	\$219,602.25	\$65,305.00	\$400,912.00
Audia Concrete Construction	\$91,771.00	\$219,585.25	\$47,857.75	\$359,214.00
Dave's Contracting	\$81,618.00	**	\$40,086.00	**

*Crew Days are included to compare bids, but are not included in the award.

**Contractor made a substantial error by entering lump sum cost for a per square foot unit price bid item, resulting in a total bid of \$214,062,241.00 for Taft Road Segment.

This project was included in the FY2012-13 Capital Improvement Program (CIP) in the budgeted amount of \$227,700 for construction and engineering, of which \$184,878 is now being recommended for award to Koala-T for construction, and \$32,006 is also recommended for award to SDA for construction engineering services (a separate item on this agenda), and \$2,750 is proposed for easement acquisition (a separate item on this agenda) for total contract awards in the amount of \$219,634, which is offset by the \$8,900 payment from Sri Venkateswara Temple for the construction of a portion of the boardwalk shown on the approved site plan. The design engineering for this project was funded in FY2011-12 in the amount of \$22,498.

Construction is scheduled to begin in fall 2012 and completion is anticipated this construction season.

RECOMMENDED ACTION: Approval to award a construction contract for the 2012 Pathway Gap and Americans with Disabilities Act Compliance Program to Koala-T Construction, the low bidder, in the amount of \$184,878.

	1	2	Y	N
Mayor Gatt				
Mayor Pro Tem Staudt				
Council Member Casey				
Council Member Fischer				

	1	2	Y	N
Council Member Margolis				
Council Member Mutch				
Council Member Wrobel				



August 16, 2012

Mr. Rob Hayes, PE, City Engineer
City of Novi
45175 W. Ten Mile Road
Novi, Michigan 48375

Re: **Recommendation for Award**
2012 Pathway Gaps and ADA Compliance Program
SDA Project No.: NV11004

Dear Mr. Hayes:

On August 15, 2012 at 2:00 pm, construction bids were opened and publicly read at the City of Novi for the 2012 Pathway Gaps and ADA Compliance Program project.

The City Clerk's office received five (5) bids for this project. The apparent low bidder, Koala-T Construction submitted a bid price of \$204,442.32. Subsequent to the bid opening, Spalding DeDecker Associates (SDA) reviewed all of the bids received and prepared the attached bid tabulation for the project. There were some errors in the bids submitted by several of the Contractors, including the low bidder. These errors are indicated in the attached bid tabulation and have been corrected. As a result, the corrected bid price for the low Bidder, Koala-T Construction is \$203,942.32 (\$184,877.32 excluding Crew Days).

Submitted unit prices were reviewed against those being currently seen in the construction industry. SDA believes the unit prices are within an acceptable range for this type of work. SDA has also reviewed contractor qualifications and a list of references from Koala-T Construction. Based upon our review of the submitted qualifications and a check of the references, SDA finds that Inland Koala-T Construction qualified to perform the required construction.

It is our recommendation that the project be awarded to the low bidder, Koala-T Construction of Pontiac, Michigan, for the 2012 Pathway Gaps and ADA Compliance Program project. Upon award by the City Council our office will coordinate the execution of the Contract Agreement, Bonds and Insurance Policy as well as any other necessary documents with the selected contractor, and issuance of a Notice to Proceed upon execution of the contract documents.

If you have any questions, please contact our office at your convenience.

Sincerely,
SPALDING DEDECKER ASSOCIATES, INC.

A handwritten signature in blue ink, appearing to read 'Maria Sedki'.

Maria Sedki, PE
Manager, Municipal Engineering Department

Enclosure: Signed Bid Tabulation
cc. Ms. Maryanne Cornelius, City Clerk



BID TAB FOR:

2012 Pathway Gap and ADA Compliance Program
City of Novi
SDA JOB NO. NV11-004



August 15, 2012 - 2:00 PM

DIVISION 1: MEADOWBROOK ROAD GAP BETWEEN GRAND RIVER & CHERRY HILL

ITEM NO.	ITEM	UNIT	QTY	Koala-T Construction		Italia Construction		Warren Contractors & Development	
				UNIT PRICE	CONTRACT AMOUNT	UNIT PRICE	CONTRACT AMOUNT	UNIT PRICE	CONTRACT AMOUNT
1	Bonds, Insurance and Mobilization (5% Max)	LS	1	\$2,108.02	\$2,108.02	\$2,500.00	\$2,500.00	\$5,524.00	\$5,524.00
2	Pre Construction Audio/Visual DVD Coverage	LS	1	\$1,000.00	\$1,000.00	\$1,500.00	\$1,500.00	\$850.00	\$850.00
3	Soil Erosion and Sedimentation Control Measures	LS	1	\$500.00	\$500.00	\$1,000.00	\$1,000.00	\$1,325.00	\$1,325.00
4	Temporary Traffic Control Devices	LS	1	\$800.00	\$800.00	\$3,500.00	\$3,500.00	\$3,900.00	\$3,900.00
5	Clearing and Grubbing	STA	6.9	\$300.00	\$2,070.00	\$500.00	\$3,450.00	\$900.00	\$6,210.00
6	Remove Tree (8"-18")	EA	8	\$600.00	\$4,800.00	\$200.00	\$1,600.00	\$650.00	\$5,200.00
7	Remove 12" CSP End Section	EA	1	\$150.00	\$150.00	\$100.00	\$100.00	\$200.00	\$200.00
8	Remove Concrete Curb and Gutter	LF	26	\$34.00	\$884.00	\$20.00	\$520.00	\$25.00	\$650.00
9	Remove Concrete Sidewalk	SF	135	\$2.00	\$270.00	\$5.00	\$675.00	\$3.00	\$405.00
10	Adjust Structure, Complete	EA	1	\$200.00	\$200.00	\$300.00	\$300.00	\$650.00	\$650.00
11	Pathway Grading	STA	7	\$500.00	\$3,450.00	\$250.00	\$1,725.00	\$1,100.00	\$7,590.00
12	Undercut Excavation (As Needed)	CY	140	\$30.00	\$4,200.00	\$10.00	\$1,400.00	\$35.00	\$4,900.00
13	Embankment, (CIP)	CY	7	\$30.00	\$210.00	\$20.00	\$140.00	\$25.00	\$175.00
14	Regrade Ditch	LF	150	\$18.00	\$2,700.00	\$15.00	\$2,250.00	\$20.00	\$3,000.00
15	4' Diameter Flat Top Shallow Storm Manhole	EA	1	\$1,800.00	\$1,800.00	\$1,400.00	\$1,400.00	\$1,800.00	\$1,800.00
16	12" RCP C76 Class IV Storm Sewer	LF	12	\$100.00	\$1,200.00	\$60.00	\$720.00	\$50.00	\$600.00
17	12" RCP C76 CL IV End Section	EA	1	\$300.00	\$300.00	\$300.00	\$300.00	\$600.00	\$600.00
18	Aggregate Base, 6" Limestone	SY	700	\$6.50	\$4,550.00	\$6.00	\$4,200.00	\$9.50	\$6,650.00
19	Concrete Curb and Gutter	LF	26	\$22.00	\$572.00	\$25.00	\$650.00	\$23.00	\$598.00
20	4" Concrete Sidewalk	SF	4,820	\$2.45	\$11,809.00	\$3.15	\$15,183.00	\$3.00	\$14,460.00
21	6" Concrete Sidewalk	SF	640	\$2.95	\$1,888.00	\$3.75	\$2,400.00	\$3.75	\$2,400.00
22	ADA Ramp - 6" Concrete	SF	105	\$2.95	\$309.75	\$4.25	\$446.25	\$5.75	\$603.75
23	ADA Detectable Warning Plate	SF	26	\$28.00	\$728.00	\$20.00	\$520.00	\$23.00	\$598.00
24	PVC Pedestrian Railing (3 rail fence)	LF	96	\$10.00	\$960.00	\$36.00	\$3,456.00	\$46.00	\$4,416.00
25	Mulch Blanket	SY	450	\$1.50	\$675.00	\$2.50	\$1,125.00	\$2.00	\$900.00
26	Restoration	LS	1	\$4,500.00	\$4,500.00	\$1,000.00	\$1,000.00	\$4,900.00	\$4,900.00
27	Inspection Crew Days	DAY	\$615.00	5.00	\$3,075.00	5.00	\$3,075.00	60.00	\$36,900.00
DIVISION 1 BID AMOUNT					\$55,708.77		\$55,135.25		\$116,004.75
DIVISION 1 WITHOUT CREW DAYS					\$52,633.77		\$52,060.25		\$79,104.75



BID TAB FOR:

2012 Pathway Gap and ADA Compliance Program
City of Novi
SDA JOB NO. NV11-004



August 15, 2012 - 2:00 PM

DIVISION 2: TAFT ROAD GAP SOUTH OF ANDES HILLS COURT				Koala-T Construction		Italia Construction		Warren Contractors & Development	
ITEM NO.	ITEM	UNIT	QTY	UNIT PRICE	CONTRACT AMOUNT	UNIT PRICE	CONTRACT AMOUNT	UNIT PRICE	CONTRACT AMOUNT
1	Bonds, Insurance and Mobilization (5% Max)	LS	1	\$3,494.72	\$3,494.72	\$7,000.00	\$7,000.00	\$10,415.00	\$10,415.00
2	Pre Construction Audio/Visual DVD Coverage	LS	1	\$1,000.00	\$1,000.00	\$1,500.00	\$1,500.00	\$895.00	\$895.00
3	Soil Erosion and Sedimentation Control Measures	LS	1	\$500.00	\$500.00	\$1,000.00	\$1,000.00	\$920.00	\$920.00
4	Temporary Traffic Control Devices	LS	1	\$500.00	\$500.00	\$3,500.00	\$3,500.00	\$4,200.00	\$4,200.00
5	Construction Fencing – Orange	LF	210	\$1.50	\$315.00	\$2.00	\$420.00	\$10.00	\$2,100.00
6	Clearing and Grubbing	STA	4.2	\$500.00	\$2,100.00	\$500.00	\$2,100.00	\$950.00	\$3,990.00
7	Remove Tree (8"-18")	EA	6	\$500.00	\$3,000.00	\$200.00	\$1,200.00	\$650.00	\$3,900.00
8	Remove Concrete Sidewalk	SF	587	\$1.00	\$587.00	\$3.00	\$1,761.00	\$3.00	\$1,761.00
9	Relocate Sprinkler Head, w/Pipe	EA	4	\$75.00	\$300.00	\$30.00	\$120.00	\$100.00	\$400.00
10	Adjust Structure, Complete	EA	1	\$250.00	\$250.00	\$300.00	\$300.00	\$650.00	\$650.00
11	Pathway Grading	STA	4	\$300.00	\$1,260.00	\$250.00	\$1,050.00	\$1,200.00	\$5,040.00
12	Undercut Excavation (As Needed)	CY	56	\$30.00	\$1,680.00	\$10.00	\$560.00	\$35.00	\$1,960.00
13	Aggregate Base, 6" Limestone	SY	440	\$6.50	\$2,860.00	\$6.00	\$2,640.00	\$9.50	\$4,180.00
14	4" Concrete Sidewalk	SF	3,395	\$2.45	\$8,317.75	\$3.15	\$10,694.25	\$3.00	\$10,185.00
15	6" Concrete Sidewalk	SF	175	\$2.95	\$516.25	\$3.75	\$656.25	\$3.75	\$656.25
16	Wooden Boardwalk, Complete	SF	2,140	\$25.70	\$54,998.00	\$48.00	\$102,720.00	\$55.00	\$117,700.00
17	Class "A" Sodding	SY	40	\$30.00	\$1,200.00	\$5.00	\$200.00	\$7.50	\$300.00
18	Mulch Blanket	SY	70	\$1.50	\$105.00	\$2.50	\$175.00	\$2.00	\$140.00
19	Wetland Edge Seed Mix and Biodegradable Mulch Blanket	SY	750	\$7.50	\$5,625.00	\$9.00	\$6,750.00	\$6.50	\$4,875.00
20	Carya ovata	EA	2	\$800.00	\$1,600.00	\$1,200.00	\$2,400.00	\$650.00	\$1,300.00
21	Cercis canadensis	EA	2	\$400.00	\$800.00	\$975.00	\$1,950.00	\$300.00	\$600.00
22	Picea abies	EA	3	\$600.00	\$1,800.00	\$215.00	\$645.00	\$300.00	\$900.00
23	Hamamelis virginiana	EA	5	\$300.00	\$1,500.00	\$350.00	\$1,750.00	\$45.00	\$225.00
24	Rhus aromatica 'Gro-Low'	EA	6	\$45.00	\$270.00	\$60.00	\$360.00	\$35.00	\$210.00
25	Taxus x media 'Densiflora'	EA	10	\$65.00	\$650.00	\$85.00	\$850.00	\$90.00	\$900.00
26	Viburnum opulus 'Compactum'	EA	8	\$45.00	\$360.00	\$115.00	\$920.00	\$100.00	\$800.00
27	Restoration	LS	1	\$3,500.00	\$3,500.00	\$1,000.00	\$1,000.00	\$3,500.00	\$3,500.00
28	Inspection Crew Days	DAY	\$615.00	22.00	\$13,530.00	20.00	\$12,300.00	60.00	\$36,900.00
DIVISION 2 BID AMOUNT					\$112,618.72		\$166,521.50		\$219,602.25 *
DIVISION 2 WITHOUT CREW DAYS					\$99,088.72		\$154,221.50		\$182,702.25 *



BID TAB FOR:

2012 Pathway Gap and ADA Compliance Program
City of Novi
SDA JOB NO. NV11-004



August 15, 2012 - 2:00 PM

DIVISION 3: MEADOWBROOK ROAD ADA COMPLIANCE PROGRAM				Koala-T Construction		Italia Construction		Warren Contractors & Development	
ITEM NO.	ITEM	UNIT	QTY	UNIT PRICE	CONTRACT AMOUNT	UNIT PRICE	CONTRACT AMOUNT	UNIT PRICE	CONTRACT AMOUNT
1	Bonds, Insurance and Mobilization (5% Max)	LS	1	\$1,037.33	\$1,037.33	\$2,099.18	\$2,099.18 *	\$3,109.00	\$3,109.00
2	Pre Construction Audio/Visual DVD Coverage	LS	1	\$550.00	\$550.00	\$1,400.00	\$1,400.00	\$780.00	\$780.00
3	Soil Erosion and Sedimentation Control Measures	LS	1	\$200.00	\$200.00	\$1,000.00	\$1,000.00	\$1,125.00	\$1,125.00
4	Temporary Traffic Control Devices	LS	1	\$1,000.00	\$1,000.00	\$3,500.00	\$3,500.00	\$3,000.00	\$3,000.00
5	Remove Concrete Curb and Gutter	LF	111	\$34.00	\$3,774.00	\$20.00	\$2,220.00	\$20.00	\$2,220.00
6	Remove Concrete Sidewalk	SF	1,185	\$1.60	\$1,896.00	\$3.00	\$3,555.00	\$3.00	\$3,555.00
7	Remove Asphalt Sidewalk	SF	660	\$1.60	\$1,056.00	\$3.00	\$1,980.00	\$2.00	\$1,320.00
8	Remove Asphalt Pavement	SY	30	\$18.00	\$540.00	\$9.00	\$270.00	\$36.00	\$1,080.00
9	Relocate Sprinkler Head, w/Pipe	EA	4	\$75.00	\$300.00	\$30.00	\$120.00	\$100.00	\$400.00
10	Adjust Structure, Complete	EA	1	\$300.00	\$300.00	\$300.00	\$300.00	\$650.00	\$650.00
11	Remove Pavement Markings, Crosswalk	LF	760	\$1.25	\$950.00	\$3.25	\$2,470.00	\$1.00	\$760.00
12	Undercut Excavation (As Needed)	CY	55	\$34.00	\$1,870.00	\$10.00	\$550.00	\$35.00	\$1,925.00
13	Aggregate Base, 6" Limestone	SY	270	\$10.00	\$2,700.00	\$6.00	\$1,620.00	\$9.50	\$2,565.00
14	Aggregate Base, 8" Limestone	SY	30	\$12.00	\$360.00	\$8.00	\$240.00	\$10.50	\$315.00
15	Concrete Curb and Gutter	LF	111	\$32.00	\$3,552.00	\$25.00	\$2,775.00	\$29.00	\$3,219.00
16	4" Concrete Sidewalk	SF	1,415	\$3.15	\$4,457.25	\$3.15	\$4,457.25	\$4.00	\$5,660.00
17	ADA Ramp – 6" Concrete	SF	485	\$3.65	\$1,770.25	\$4.25	\$2,061.25	\$5.20	\$2,522.00
18	Asphalt Pavement, HMA, 13A	TON	7	\$230.00	\$1,610.00	\$200.00	\$1,400.00	\$450.00	\$3,150.00
19	ADA Detectable Warning Plate	SF	124	\$28.00	\$3,472.00	\$20.00	\$2,480.00	\$23.00	\$2,852.00
20	Pavement Markings Overlay Cold Plastic, 8" Crosswalk	LF	760	\$1.00	\$760.00	\$7.25	\$5,510.00	\$4.80	\$3,648.00
21	Restoration	LS	1	\$1,000.00	\$1,000.00	\$1,000.00	\$1,000.00	\$3,000.00	\$3,000.00
22	Inspection Crew Days	DAY	\$615.00	4.00	\$2,460.00	5.00	\$3,075.00	30.00	\$18,450.00
DIVISION 3 BID AMOUNT					\$35,614.83 *		\$44,082.68 *		\$65,305.00
DIVISION 3 WITHOUT CREW DAYS					\$33,154.83 *		\$41,007.68 *		\$46,855.00
TOTAL BID AMOUNT					\$203,942.32 *		\$265,739.43 *		\$400,912.00 *
TOTAL WITHOUT CREW DAYS					\$184,877.32 *		\$247,289.43 *		\$308,662.00 *

* CORRECTED BY THE ENGINEER

Other Bidders	Total Bid Amount	Grand Total w/o Crew Days
Audia Concrete Construction	\$359,214.00	\$332,769.00
Dave's Contracting, Inc.	\$214,183,945.00	\$214,162,420.00

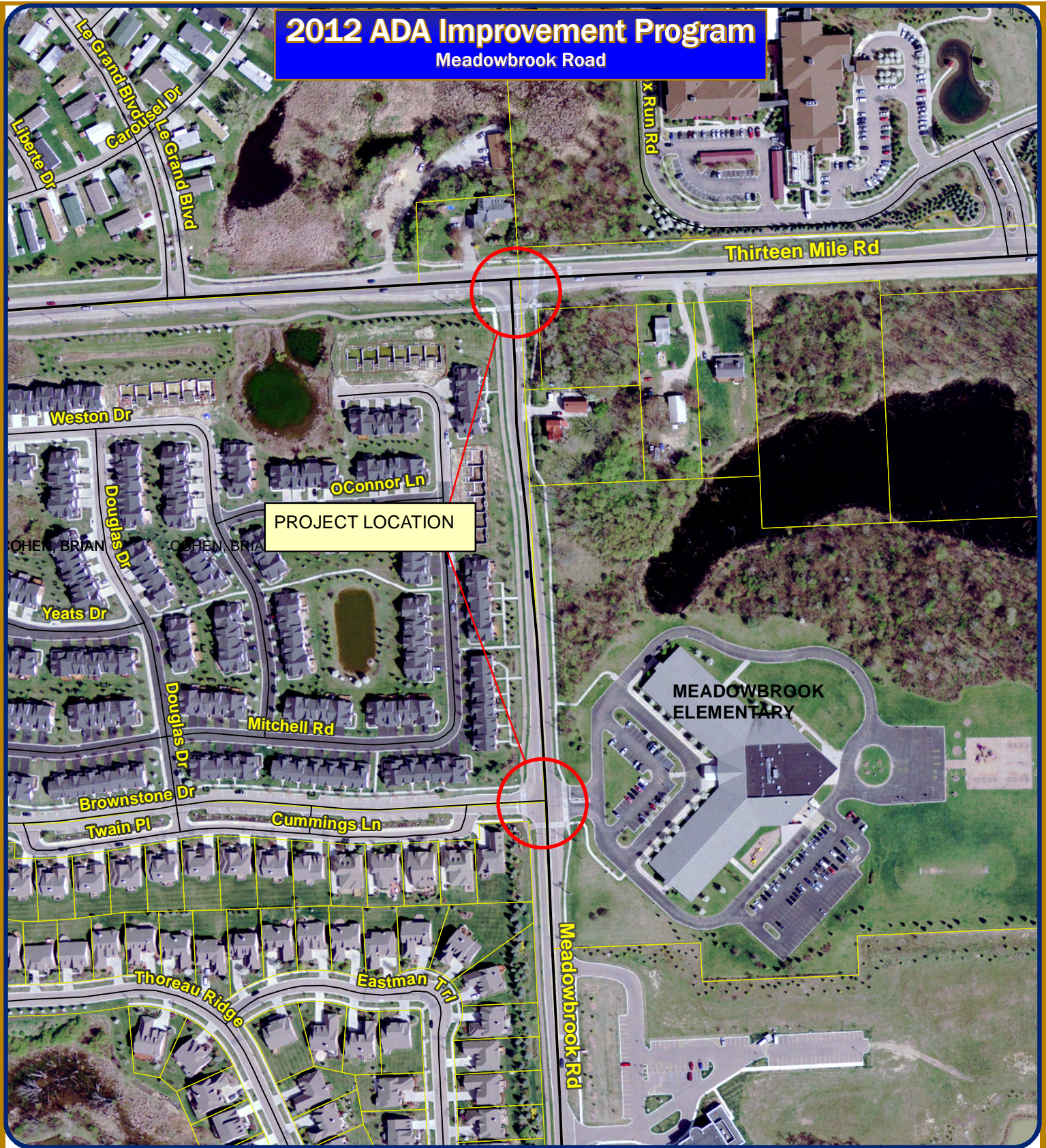
I HEREBY CERTIFY THAT THE ABOVE IS THE TRUE AND CORRECT SUMMARY OF THE PROPOSALS RECEIVED

SPALDING DEDECKER ASSOCIATES, INC.
Maria Sedki, PE

8/16/2012
DATE

2012 ADA Improvement Program

Meadowbrook Road



Map Author: Croy
Date: 4/25/12
Project: ADA
Version #: v2.0

MAP INTERPRETATION NOTICE

Map information depicted is not intended to replace or substitute for any official or primary source. This map was intended to meet National Map Accuracy Standards and use the most recent, accurate sources available to the people of the City of Novi. Boundary measurements and area calculations are approximate and should not be construed as survey measurements performed by a licensed Michigan Surveyor as defined in Michigan Public Act 132 of 1970 as amended. Please contact the City GIS Manager to confirm source and accuracy information related to this map.

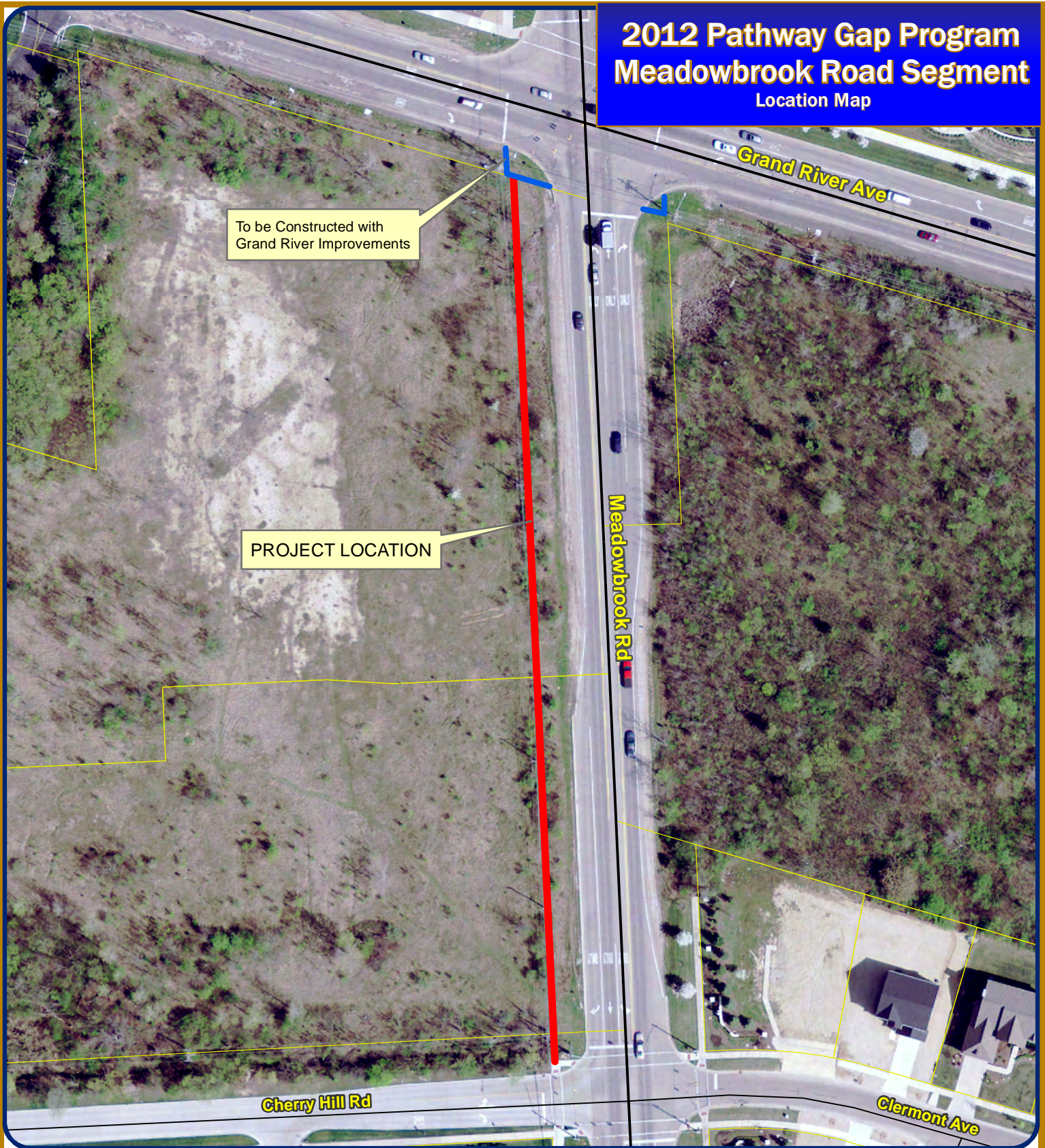


1 inch = 250 feet



City of Novi
Engineering Division
Department of Public Services
26300 Delwal Drive
Novi, MI 48375
cityofnovi.org

2012 Pathway Gap Program Meadowbrook Road Segment Location Map



Map Author: Croy
Date: 2/29/12
Project: 2012 Pathway Gap Program
Version #: v1.1



1 inch = 100 feet



City of Novi
Engineering Division
Department of Public Services
26300 Delwal Drive
Novi, MI 48375
cityofnovi.org

MAP INTERPRETATION NOTICE

Map information depicted is not intended to replace or substitute for any official or primary source. This map was intended to meet National Map Accuracy Standards and use the most recent, accurate sources available to the people of the City of Novi. Boundary measurements and area calculations are approximate and should not be construed as survey measurements performed by a licensed Michigan Surveyor as defined in Michigan Public Act 132 of 1970 as amended. Please contact the City GIS Manager to confirm source and accuracy information related to this map.

2012 Pathway Gap Program

Taft Road Segment

Location Map



Map Author: Croy
Date: 2/29/12
Project: 2012 Pathway Gap Program
Version #: v1.1



1 inch = 225 feet



City of Novi
Engineering Division
Department of Public Services
26300 Delwal Drive
Novi, MI 48375
cityofnovi.org

MAP INTERPRETATION NOTICE

Map information depicted is not intended to replace or substitute for any official or primary source. This map was intended to meet National Map Accuracy Standards and use the most recent, accurate sources available to the people of the City of Novi. Boundary measurements and area calculations are approximate and should not be construed as survey measurements performed by a licensed Michigan Surveyor as defined in Michigan Public Act 132 of 1970 as amended. Please contact the City GIS Manager to confirm source and accuracy information related to this map.