



CITY of NOVI CITY COUNCIL

Agenda Item 1
December 17, 2012

SUBJECT: Discussion of Pavilion Shore Park Historical Icon design and process for concepts and future installation at park entryway.

SUBMITTING DEPARTMENT: Parks, Recreation and Cultural Services

CITY MANAGER APPROVAL: 

BACKGROUND INFORMATION:

The current Pavilion Shore Park has great historical significance for the Novi community. Over the years, the land encompassed by the park has experienced a lot of significant events from pre-settlement use by Native Americans, to a Casino Dance Hall Pavilion, Lake Recreation Opportunities, and an Amusement Park. The Novi Historical Commission expressed at their meeting in February of 2012 a desire to bring the history of the community to the attention of Novi residents. As an opportunity to showcase the culturally and environmentally rich history of Novi, the concept of a historic icon has been included in concepts for at Pavilion Shore Park (located on the south side of Walled Lake, at Thirteen Mile Road and Old Novi Road).

After a review of Novi's history, Hamilton Anderson and Associates as part of their park design process of Pavilion Shore Park, has suggested the following two possible historical icons for use at the park's entryway. Both design concepts are being presented to City Council for direction on how to best proceed in moving forward with this project.

- The first concept consisted of a 30' lattice type structure that was inspired by the steel trellis structures of the amusement park (see attached). After staff and historical commission review, it was agreed that the steel structure was a unique idea. One of the concerns with the design was that it might dominate the landscape and give the modern implication of a smaller version of a communication or cell phone tower. The estimated cost of this option is \$19,000, which is included in Phase 1 of the Conceptual Phasing Estimate Site Improvement. With this in mind, Hamilton Anderson and Associates was asked to submit an alternative design as an option.
- The second concept put a stronger emphasis on the content of the historical marker while utilizing subtle design elements which relate to the site history (keeping the trellis design on a smaller scale). This concept shifts the marker to the north side of the walkway so park users can look over the property as they read about the property and its former uses. The marker would be divided into four primary content areas, the Native Americans, the Pavilion, the Waterfront and the Amusement Park. Each area would be represented with interpretive panels that would have pictures and text related to each area. A rendering of this concept and example of potential images are attached.

The Historical Commission met on October 24, 2012 and reviewed the second concept plan presented by Hamilton Anderson. Considering the two proposals the Commission recommended the second plan citing the initial concerns with the first proposal.

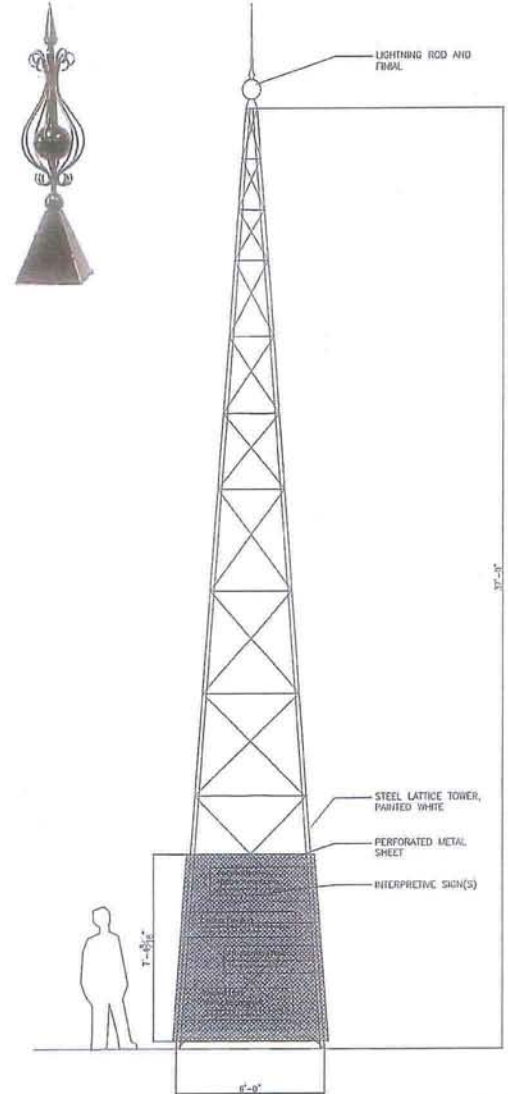
The Council is asked to discuss and decide whether one of these concepts is acceptable, or whether some additional review body recommend on this or other alternatives.

RECOMMENDED ACTION: Discussion of Pavilion Shore Park Historical Icon design and process for concepts and future installation at park entryway.

	1	2	Y	N
Mayor Gatt				
Mayor Pro Tem Staudt				
Council Member Casey				
Council Member Fischer				

	1	2	Y	N
Council Member Margolis				
Council Member Mutch				
Council Member Wrobel				

FIRST CONCEPT - OPTION 1



HISTORIC MARKER

Pavilion Shore Park

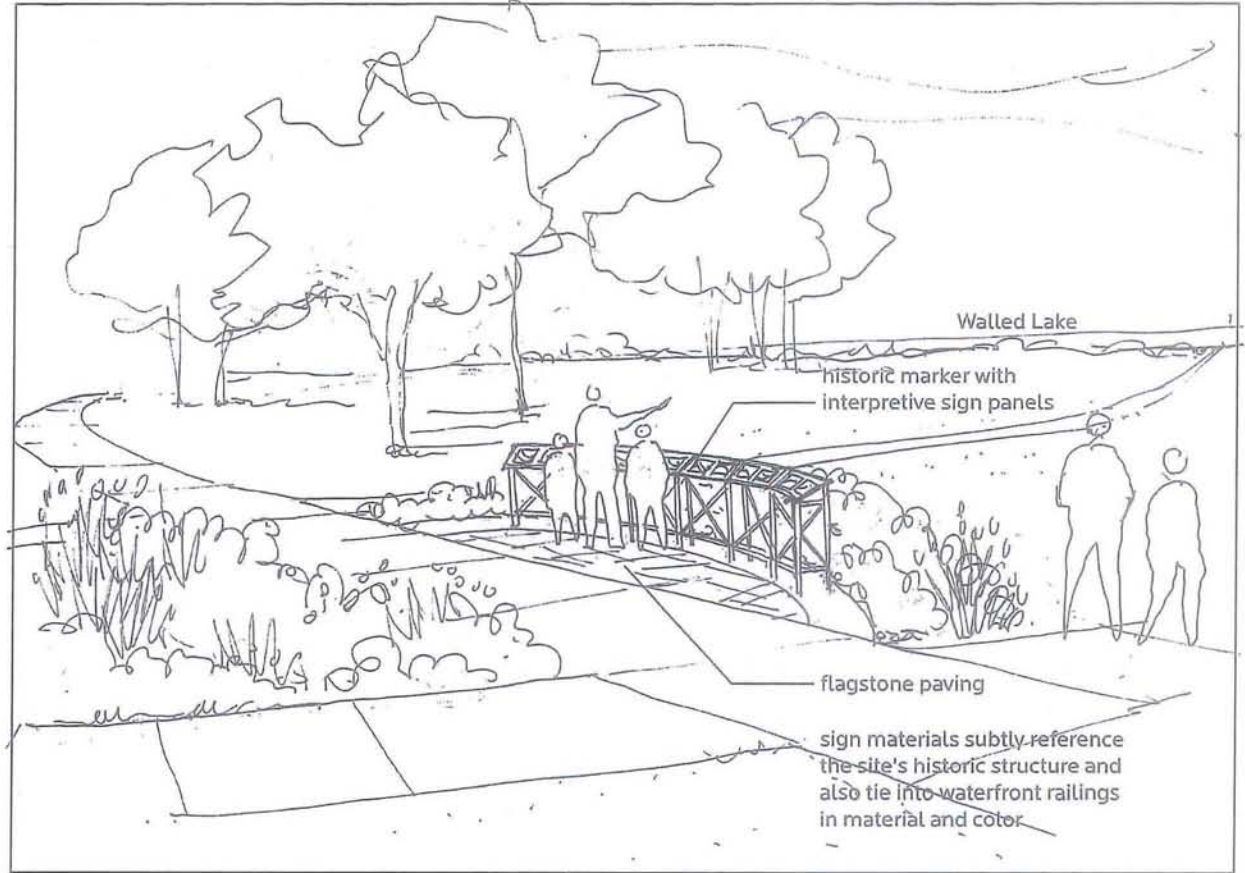
City of Novi, Michigan
 hamiltonanderson 

FIRST CONCEPT - OPTION 1

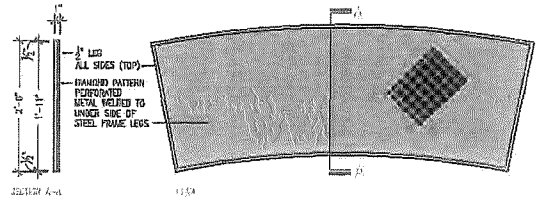
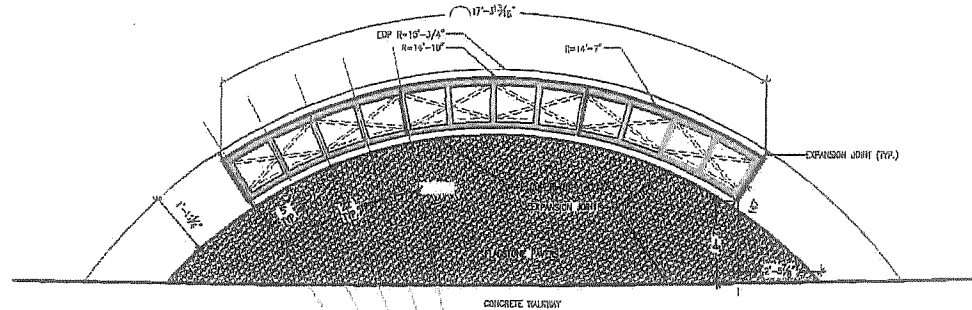


OPTION 1

SECOND CONCEPT - OPTION 2

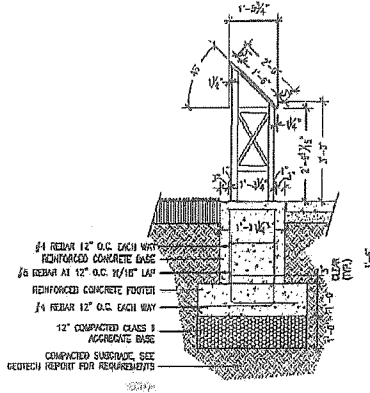


HISTORIC MARKER
Pavilion Shore Park

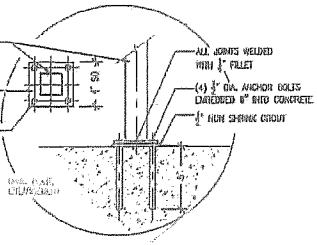
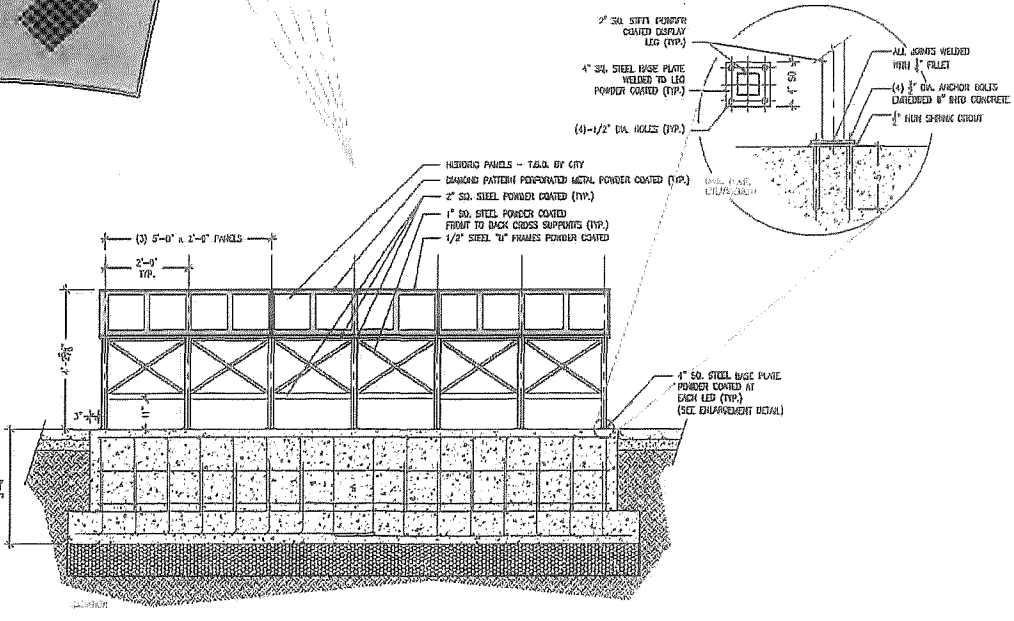


11.12.1
 11.12.2
 11.12.3

11.13
 FIELD WELDING IS NOT PERMITTED.
 MECHANICALLY SPlice MATERIALS WHERE NEEDED.



HISTORIC MARKER
 SCALE: 1/2"=1'-0"



HISTORIC MARKER
 Pavilion Shore Park

THESE ARE EXAMPLE PICTURES ONLY

The signs will be presented in this order. Each color represents a different item discussed.

The design is very simple and the signs read separately, as part of a color group and as part of the entire sign. Each color represents a different subject discussed.

We pulled the signs and images together from words and images provided to us. So please review and see if these are satisfactory. Perhaps you know of better images or ones that tell the story better.

As you can see, many of the images are fuzzy even at this size. We would like to have access to the original photos so we can rescan at a higher resolution or get new images entirely.

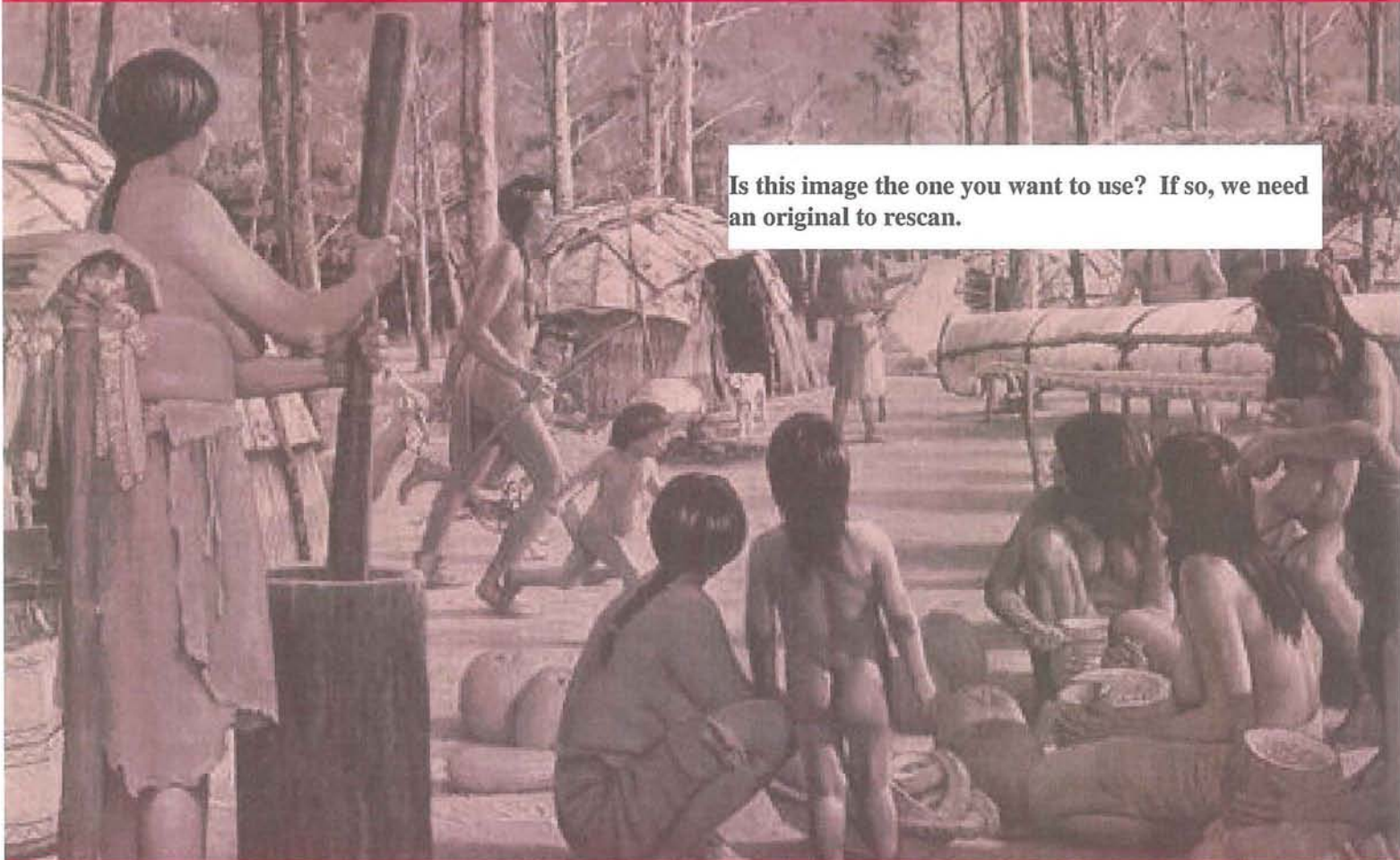
We have added notes to some of the signs telling you what we require.

Another general question is whether we need assign credit to any of the images.

NATIVE AMERICAN ACTIVITIES

Pre-European contact, 1800s

Native Americans camped on the shores of Walled Lake prior to the first government surveyors.



Is this image the one you want to use? If so, we need an original to rescan.

When the first non-native settlers arrived in the 1830s, this native culture is believed to have been still in place. Numerous intersecting trails around and near the lake, along with local lore, suggest that the lake was an active area of settlement and trading.

WALLED LAKE CASINO

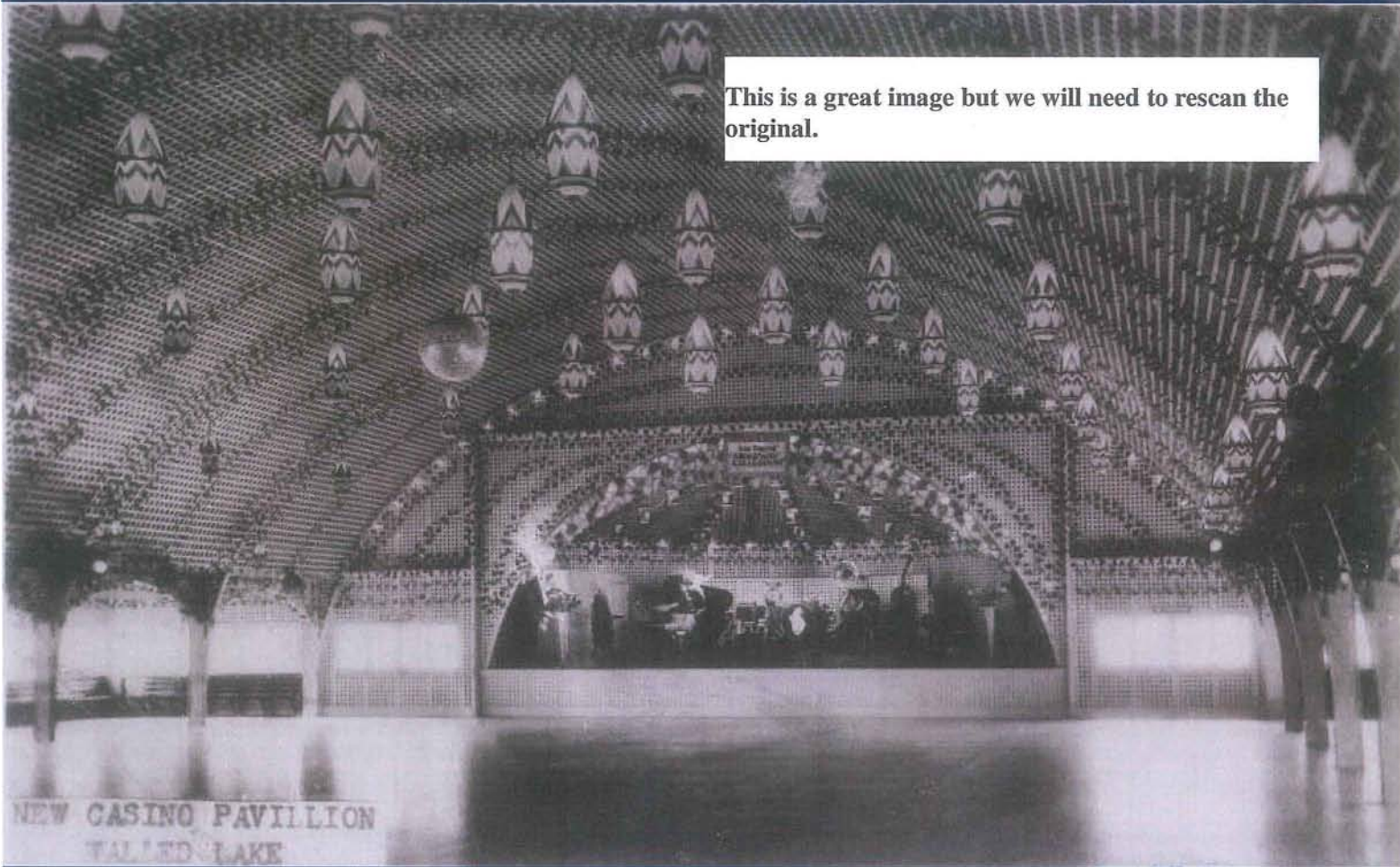
1917

The Dance Hall, built in 1917 on the south end of the lake, quickly became the hub of Walled Lake recreation activity.

This is a great image but we will need to rescan the original.

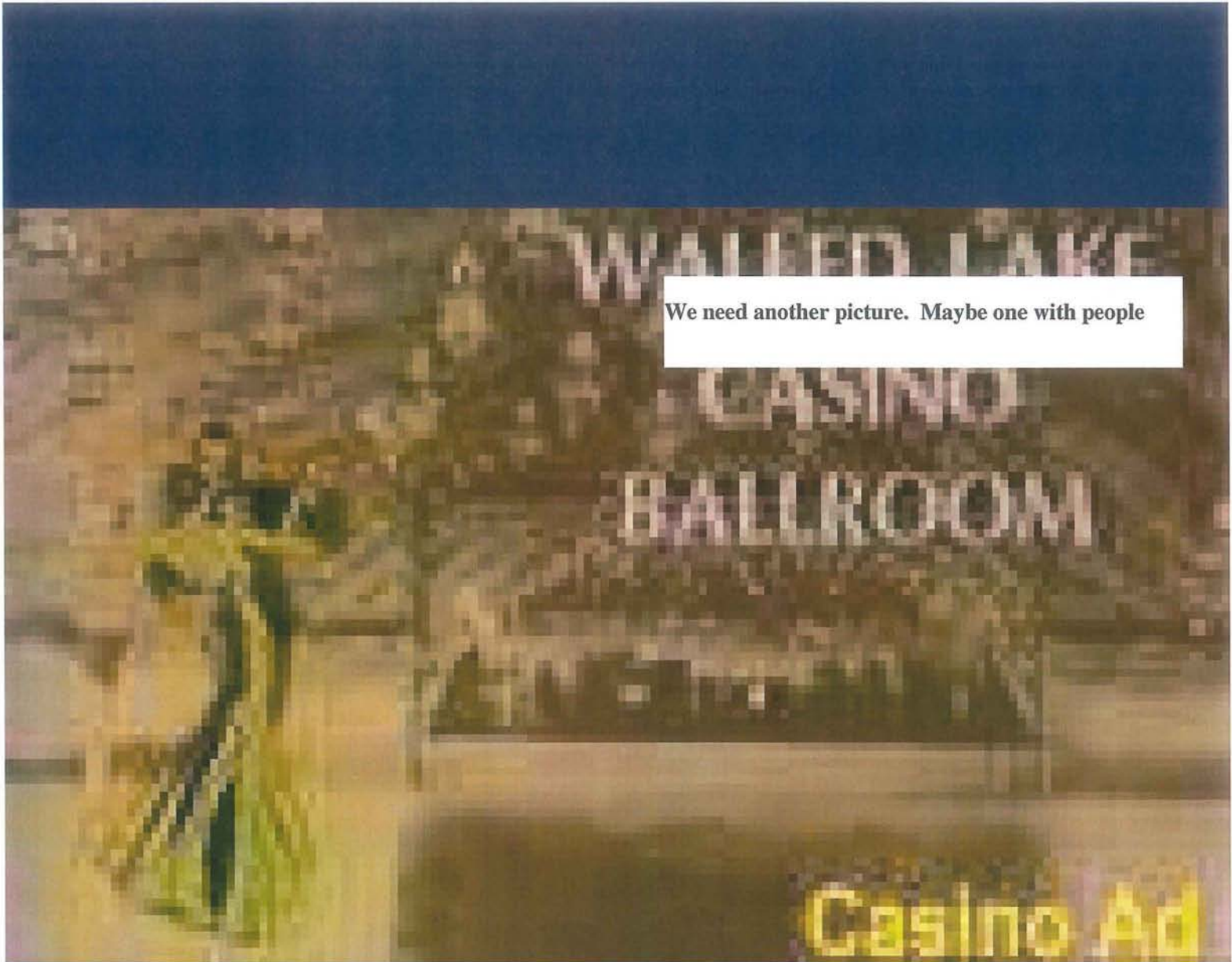


The Casino Dance Hall was built at the intersection of South Lake Drive and 13 Mile Road. It was destroyed by fire in 1922 and immediately rebuilt; it was again destroyed by fire in 1965.



This is a great image but we will need to rescan the original.

It contained a 120' x 140' hardwood dance floor. It's ceiling was decorated with specially-designed wooden and silk stars, hand-painted and lit to create the effect of the night sky.



We need another picture. Maybe one with people

The casino hosted popular musical groups of the period including Benny Goodman, The Dorsey Brothers, Glenn Miller and Guy Lombardo.

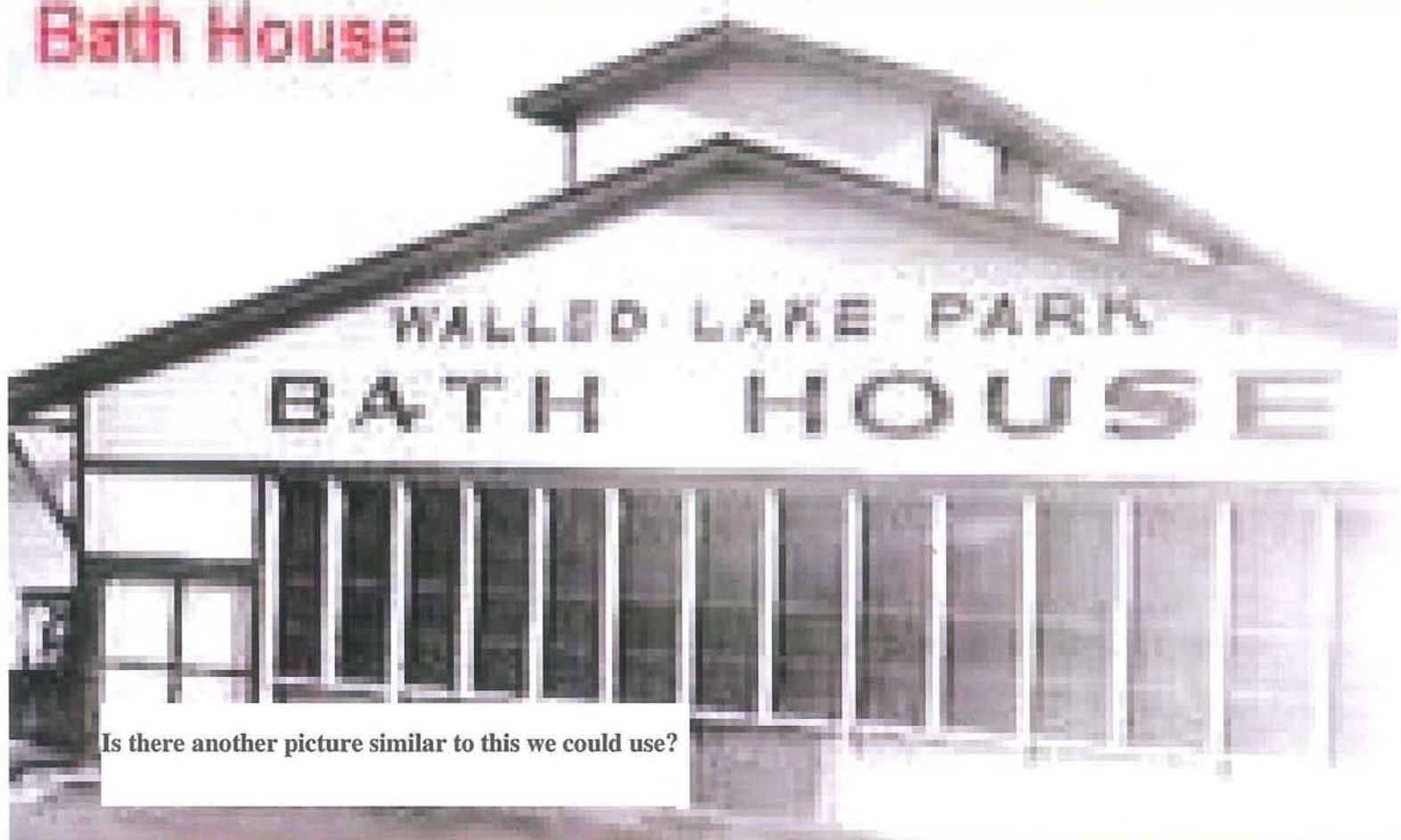
WATERFRONT

20th Century

The area hosted several prominent venues including a bathhouse, boating concessions, giant slides and the popular ballroom.



Bath House



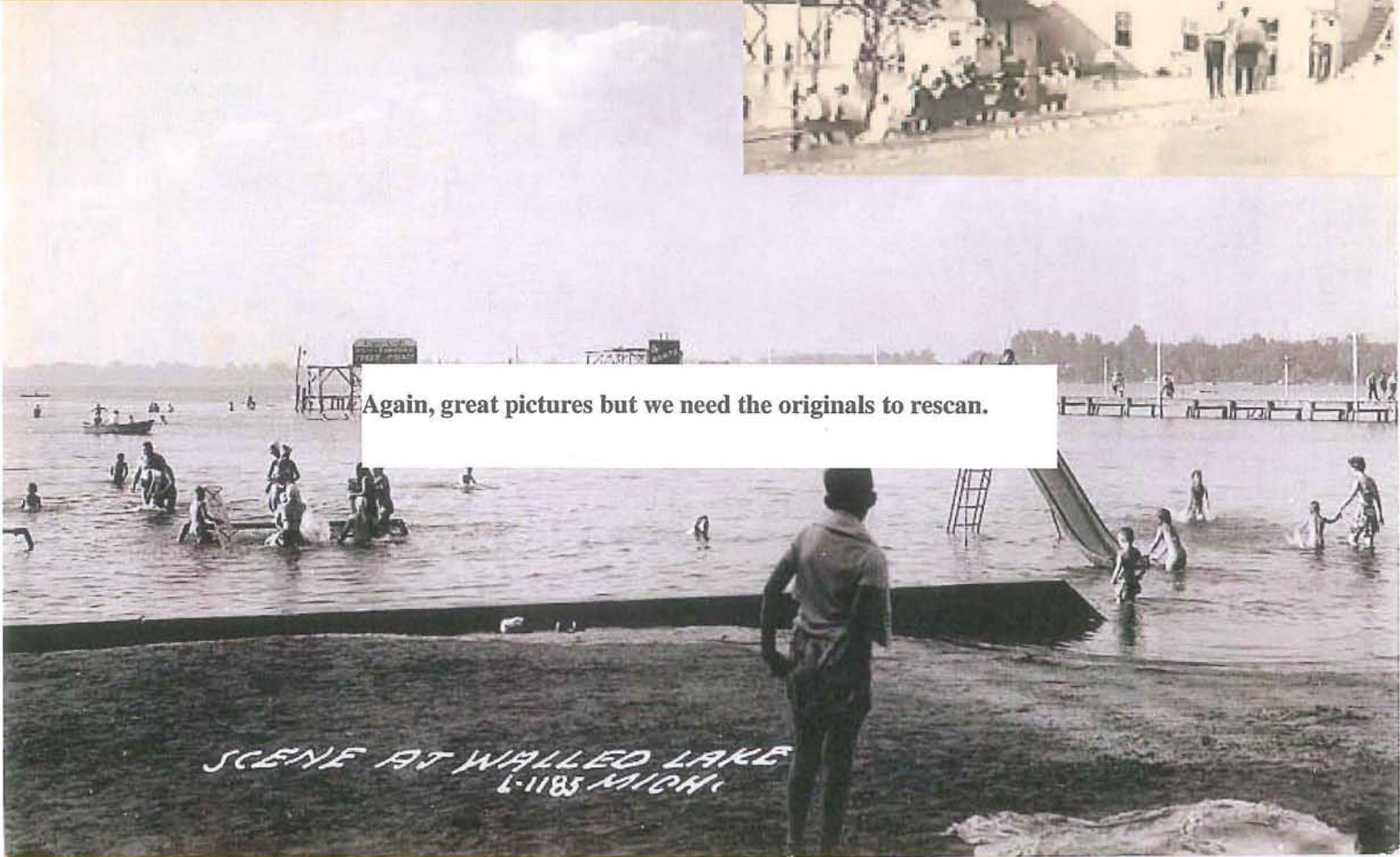
Is there another picture similar to this we could use?



Again, great pictures but we need the originals to rescan.



Again, great pictures but we need the originals to rescan.

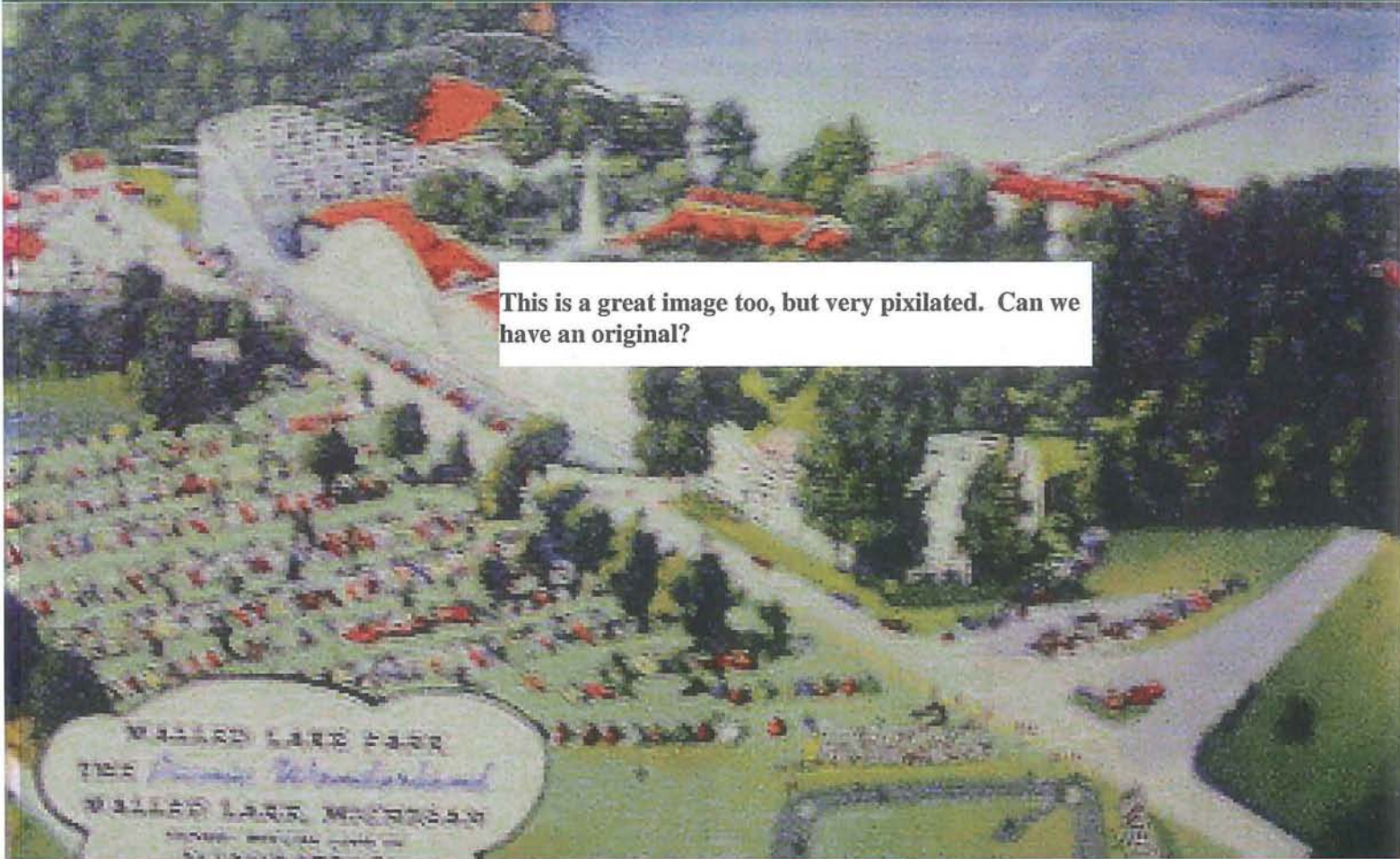


SCENE AT WALLED LAKE
6-1185 MICH.

WALLED LAKE AMUSEMENT PARK

1929

Walled Lake was the recreation haven for southeast Michigan, drawing visitors from the nearby Detroit area.

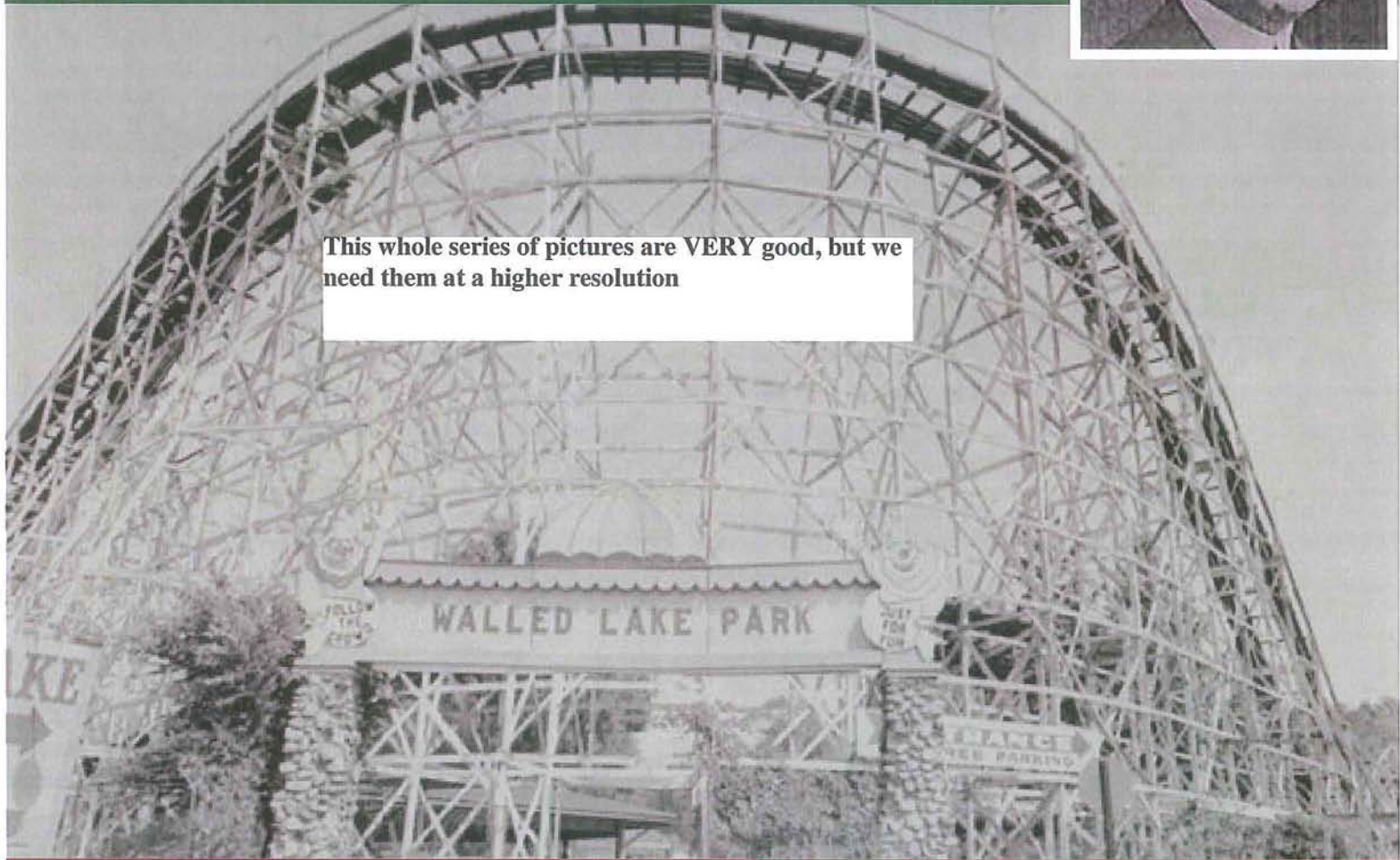


This is a great image too, but very pixilated. Can we have an original?

The park opened on May 9, 1929 to instant success. The park hosted company picnics and large group outings. He was interested in having a park of his own, having built 27 coasters at other parks around the country.



This whole series of pictures are VERY good, but we need them at a higher resolution



He constructed the Walled Lake Amusement Park on the south end of Walled Lake.

The center piece of the amusement park was a new coaster, christened "The Flying Dragon". Other popular rides included the "Pretzel" and the "Tilt-a-Whirl".



Fred Pearce Jr. took over operations of the park when Fred W. Pearce died in the early 1960s. He later sold the park to the Wagner brothers who owned Edgewater Park at 7 Mile and Berg in Detroit.



The park fell into disrepair and was closed at the end of the 1968 season with many of the rides dismantled and relocated to Edgewater Park.

Landing's Park
 Conceptual Phasing Estimate
 9-Jan-12

Hamilton Anderson Associates
 Project #2011066.00

Description	Qty	Units	Cost/Unit	Total	
Phase 1					
General Conditions and Site Preparation					
Mobilization	1	Allowance	20,000.00	20,000.00	
Survey and Staking	1	Allowance	2,000.00	2,000.00	
Tree removal and clearing	1	Allowance	15,000.00	15,000.00	
Soil Erosion Control (Shoreline)	880	LF	2.50	2,200.00	
Tree protection	30	EA	250.00	7,500.00	
Concrete wall removal	125	LF	40.00	5,000.00	subtotal
Earthwork/Grading	1	Allowance	17,000.00	17,000.00	\$ 68,700.00
Utilities and Electrical					
Storm Drainage Pipe	300	LF	28.00	8,400.00	
Utility Pole relocation	2	EA	5,000.00	10,000.00	
Storm Drainage Structure	4	EA	1,850.00	7,400.00	
Primary Connection to DTE	1	Allowance	14,000.00	14,000.00	
Transformer pad, single phase, prefab	1	EA	1,800.00	1,800.00	
Ground Mat	1	EA	2,100.00	2,100.00	
Distribution Panel	1	EA	4,800.00	4,800.00	
Secondary Conduit, feeders from transformer to panel	1	LS	2,000.00	2,000.00	
lighting contactor, photo cell time clock	1	LS	2,400.00	2,400.00	
Handholes	4	EA	700.00	2,800.00	
Type "OA" Light Fixture	2	EA	3,800.00	7,600.00	
lighting contactor, photo cell time clock	1	LS	2,400.00	2,400.00	
DTE Service Charge Allowance	1	Allowance	6,000.00	6,000.00	subtotal
Misc. Sleeves	1	LS	1,000.00	1,000.00	\$ 72,700.00
Site Improvements					
Concrete retaining wall (Shoreline)	170	LF	120.00	20,400.00	
Stone terraces (Shoreline)	650	LF	90.00	58,500.00	
Concrete walk (5")	14,700	SF	5.00	73,500.00	
Concrete curb and gutter (East Parking Lot)	300	LF	22.00	6,600.00	
Asphalt paving (West Parking Lot - BF and Family only, 10 cars)	4,000	SF	2.70	10,800.00	
Historical Icon	1	Allowance	19,000.00	19,000.00	
Park Sign	1	EA	7,000.00	7,000.00	
Benches	4	EA	3,500.00	14,000.00	subtotal
Trash receptacles	2	EA	1,500.00	3,000.00	\$ 212,800.00
Shoreline Stabilization and Native Plantings					
Excavation/Dredging/Fill	50	CY	5.50	275.00	
Topsoil Placement, 6"	1330	SY	2.69	3,577.70	
Final Grading	0.6	AC	2,000.00	1,200.00	
Stone Toe for rip rap areas and areas adjacent to hardscapes	215	CY	65.00	13,975.00	
Filter Fabric for rip rap (360 linear ft, assume 8' width)	2,880	SF	0.20	576.00	
Coir logs (620 linear ft x 20" diameter)(incl. wave break, same length)	620	LF	26.00	16,120.00	
Coir Erosion Control Blankets (C125BN 6 rolls)(roll-6.67'x108')	8	rolls	107.00	856.00	
Staking - for Coir Logs	207	stks	1.77	366.39	
Miscellaneous (staples, twine, flagging, waterfowl deterrent)	1	LS	350.00	350.00	
Wetland Edge / Emergent Wetland Seed mix	0.25	AC	1,324.00	331.00	
Wet-Mesic Prairie Seed Mix	0.5	AC	998.00	499.00	
Herbacious Plugs (land, 4' o.c.)	1400	EA	1.35	1,890.00	
Herbacious tubers (water, 2' o.c.)(assumes 10' aquatic planting zone)	750	EA	3.55	2,662.50	subtotal
Installation and Delivery	1	LS	7,500.00	7,500.00	\$ 50,178.59
Landscaping					
Seeded lawn restoration (includes 3" of topsoil)	200,000	SF	0.20	40,000.00	
2 Year landscape maintenance	1	Allowance	10,000.00	10,000.00	subtotal
Shade trees	15	EA	550.00	8,250.00	\$ 58,250.00
Contingency	20%			92,525.72	
			Construction Subtotal	555,154.31	
Design, Survey and Engineering Fees				66,970.00	
Permitting Allowance				3,000.00	
PROJECT TOTAL (phase 1)				625,124.31	