



**AMSON
DEMBS**
Development, Inc.

26105 Lannys Road
Suite A
Novi, Michigan 48375-1025
(248) 380-7100 • Fax (248) 380-7659

RECEIVED
NOV 30 2007
CITY OF NOVI
COMMUNITY DEVELOPMENT

City of Novi
45175 W. 10 Mile Road
Novi, MI 48375

November 19, 2007

Dear ZBA,

We are proposing an upgraded entrance sign to Beck North Corporate Park located off of West Road. The new sign exceeds the 24 sq. ft. ordinance. The new sign we are proposing will be made out of brick and limestone, replacing the current sign made of bronze plastic. The sign will be 60 sq. ft. in length and run through the center island of the entrance. In addition to upgrading the new sign we will be completing a full landscape upgrade around it.

If you have any questions feel free to call anytime.

Sincerely,

Jason Parent
Construction Coordinator

Consultant

CONSTRUCTION NOTE SCHEDULE

GENERAL CONSTRUCTION NOTES

- REFER TO STRUCTURAL DRAWINGS FOR ALL CONCRETE AND STEEL SIZES, LOCATIONS, AND SPECIFICATIONS
- FOLLOW MANUF. INSTALLATION REQUIREMENTS AND RECOMMENDATIONS UNLESS IN DIRECT CONFLICT W/ DRAWINGS OR CODE REQ. - CONFIRM CONFLICTING INFO. W/ ARCHITECT

3 CONCRETE

- 3a 24" WIDE CONC. TRENCH FTG. BOTTOM OF FTG. @ MIN. 42" BELOW FIN. GRADE) REIN. W/ (2) #5 RODS CONT. TOP & BOTTOM
- 3b
- 3c
- 3d

4 MASONRY

- 4a 4" UTILITY BRICK VENEER W/ 2" AIRSPACE BETWEEN # CONG. BLOCK BACK-UP (NOTE 4b). ATTACH BRICK TO BLOCK WITH #160 HOT DIP GALV. TYPE 3 A.D.I. BRICK TIES BY "WIRE BOND" AT 16" O.C. VERT. AND 24" O.C. HORIZ.
- 4b 8" STANDARD C.M.U. REIN. WITH HOT DIP GALV. 9 GA. HORIZ. TRUSS REIN. AT 16" O.C. VERT. - GROUT BOTTOM COURSE & VERT. REINFORCING LOCATIONS SOLID - IN VERT. @ 48" O.C.
- 4c 4" LIMESTONE VENEER W/ 2" AIRSPACE BETWEEN # CONG. BLOCK BACK-UP (NOTE 4b). ATTACH LIMESTONE TO BLOCK WITH STAINLESS STEEL STRAPS ANCHORED IN MASONRY OR WELDED TO LINTEL BEAM ABOVE 9'-4" A.F.F. (TYP.)

Project title

PROPOSED SIGNAGE FOR:
Beck North Corporate Park

City of Novi
 Oakland County, Michigan

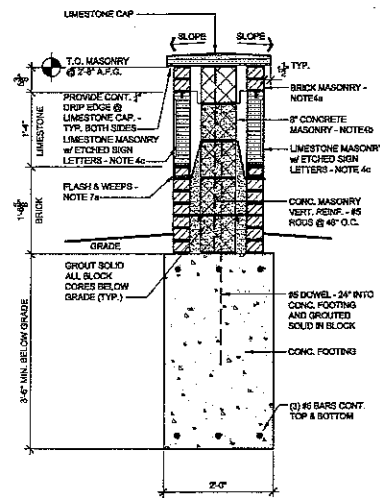
Issued dr/cr

PRELIMINARY REVIEW 10.15.07
 LANDSCAPE 10.24.07

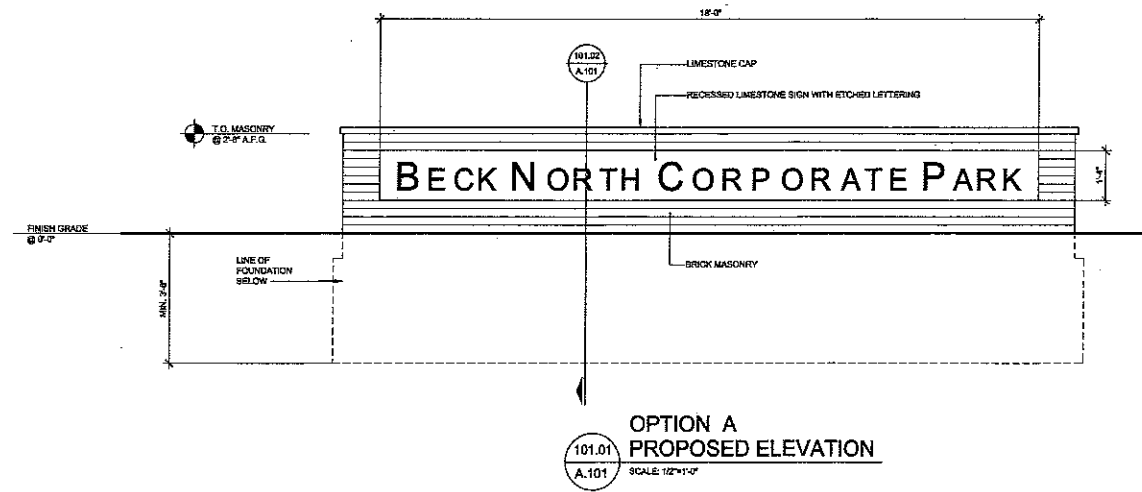
Sheet title

PROPOSED SIGN
 ELEVATIONS &
 SECTIONS

Project no



101.02 WALL SECTION
 A.101 SCALE: 3/4"=1'-0"



101.01 OPTION A
 A.101 PROPOSED ELEVATION
 SCALE: 1/2"=1'-0"