



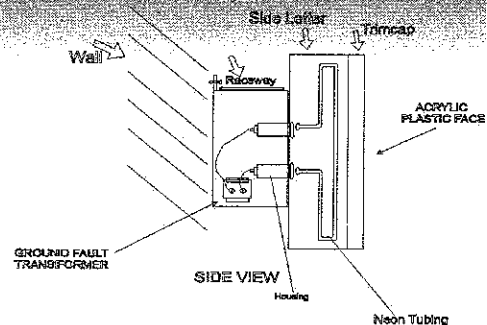
## Meadowbrook Side

### MATERIAL USED IN CHANNEL LETTERS SIGN

**GENERAL SPECIFICATIONS**  
 • FABRICATED ALUMINUM LETTERS WITH ALUM. BACKS & .040" ALUM. 6" DEEP RETURNS  
 • ACRYLIC PLASTIC FACES 3/16 THICK, WHITE COLOR  
 • BLACK TRIMCAP FOR FACES.  
 • Neon Tubing 15M.M. THICK  
 • UL Glass (PK) Housing  
 • All Letters To Be Mounted On A Raceway  
 • Raceway Painted To Match Color Of Wall

### ELECTRICAL REQUIREMENTS:

• (2) 15/30 TRANSFORMER 4.5 AMPS 120V. FOR EACH (1) 20 AMP CIRCUIT REQ.  
 ALL TRANSFORMERS ARE TO BE 2161 UL PRODUCT  
 • INTERNALLY ILLUMINATED WITH NEON TUBING 15 MM  
 • DISCONNECT SWITCH U.L. APPROVED  
 • FINAL HOOK UP TO PRIMARY BY OTHERS.



**Dearborn SIGNS**  
 & Awnings, INC.

8900 Brandt, Dearborn, MI 48126

Tel: (313) 584-8828

Fax: (313) 584-8838

e-mail: dearbornsign@sbcglobal.net

web: dearbornsigns.com

PROJECT NAME:

PROJECT ADDRESS:

TYPE OF WORK:

PHONE #

CUSTOMER NAME:

CUSTOMER APPROVAL SIGNATURE:

DATE:

NOTES:

THESE DRAWING ARE PROPERTY OF DEARBORN SIGNS & AWNING, INC. AND ARE NOT TO BE USED FOR FABRICATION OR REPRODUCTION WITHOUT APPROVAL. THESE ARE SOLELY FOR THE PURPOSE OF DESIGN INTENT.

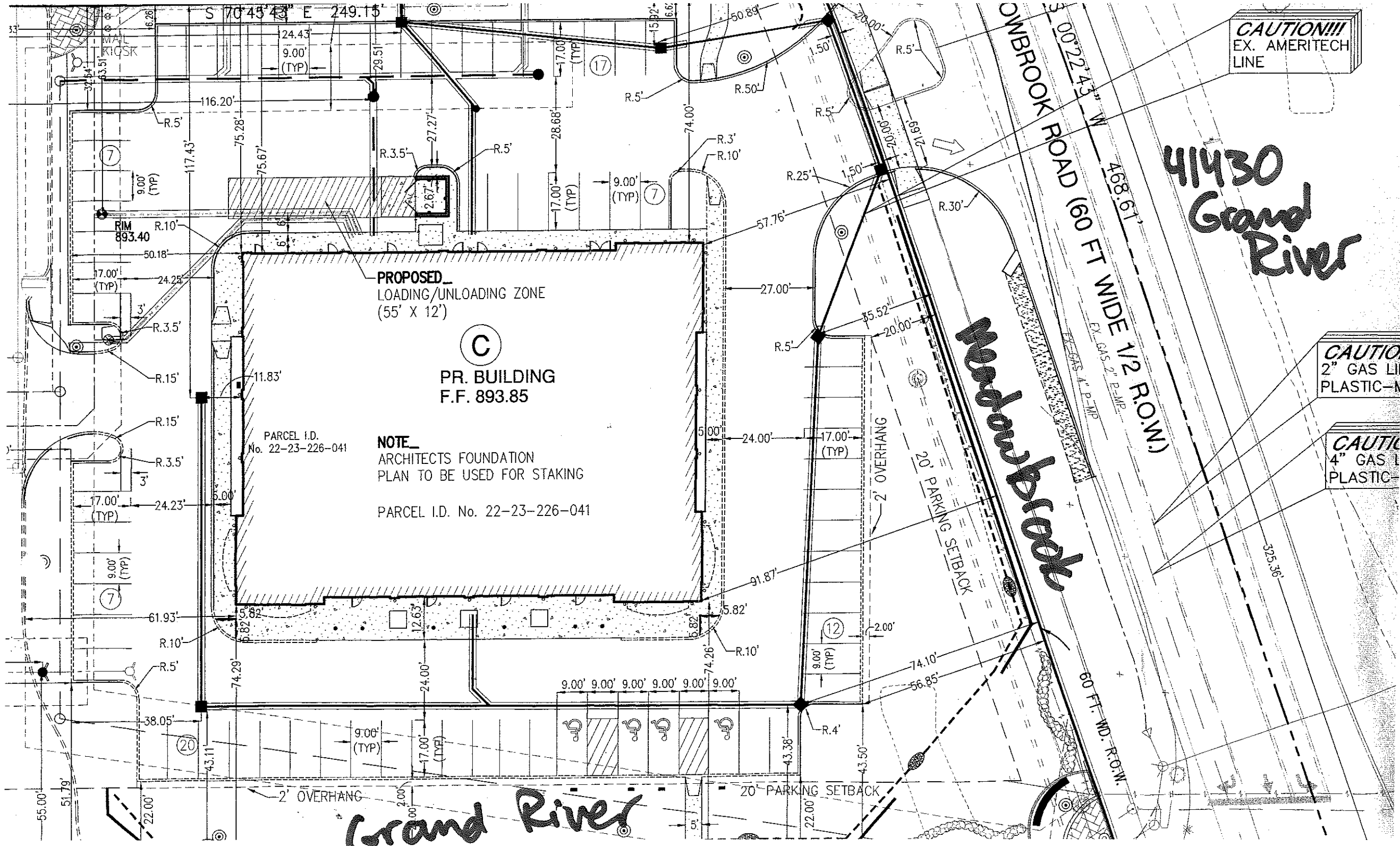
COPYRIGHT © 2004

CAUTION!!!  
EX. AMERITECH  
LINE

41430  
Grand River

CAUTION  
2" GAS LI  
PLASTIC-N

CAUTION  
4" GAS LI  
PLASTIC-



Grand River

Woodmanbeck