



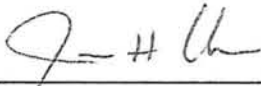
SIGNAGE APPROVAL

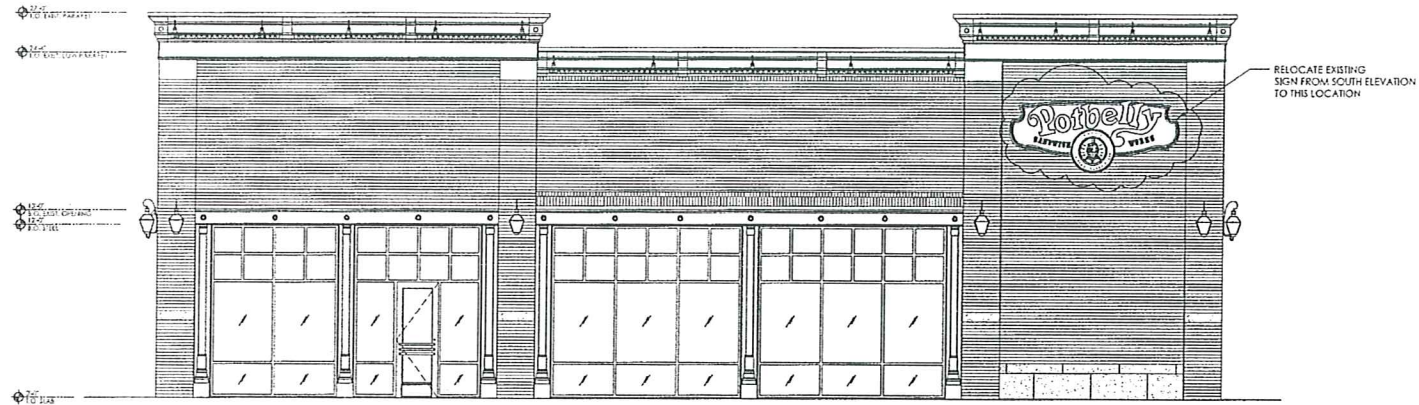
RE: Potbelly Sandwich Works – DET- 43350 Grand River Ave., Novi, MI

Date: 07.06.09

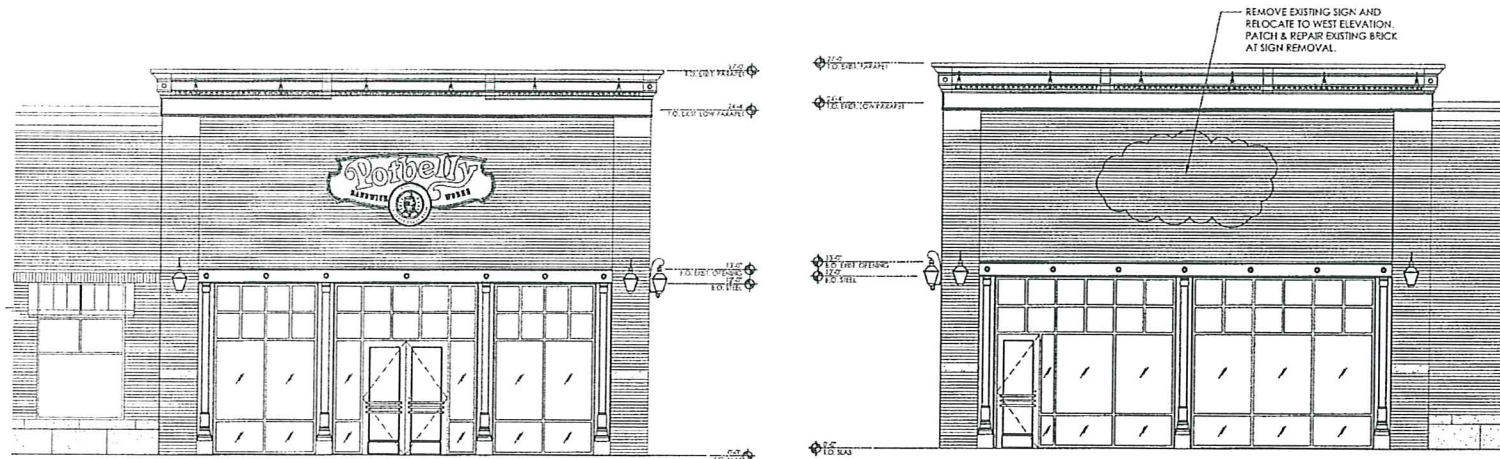
We, *NWI Town Center Investors LLC*, owners & or agent for the above location do hereby authorize and approve the installation of signage per the attached drawing. Please accept this letter as authorization to obtain the necessary permits for said sign installation.

Sincerely,


Name: _____ Title: *GENERAL MANAGER
GEPMI AS AGENT
FOR NTC, LLC*



01 WEST ELEVATION



02 NORTH ELEVATION

03 SOUTH ELEVATION



DET- NOVI
43350 GRAND RIVER AVENUE
NOVI, MI 48375

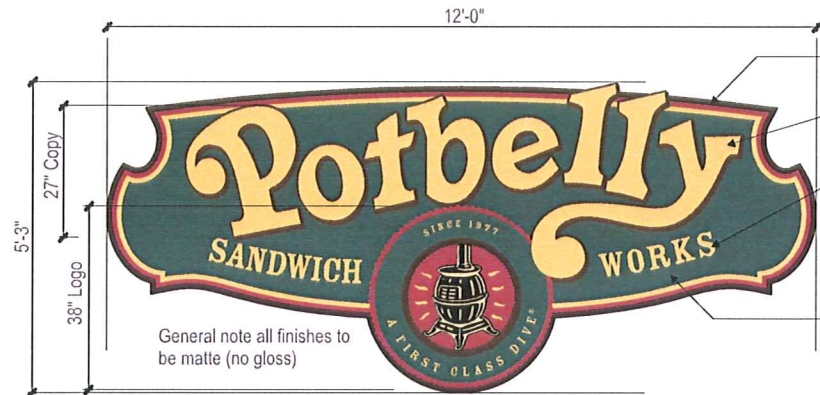
DATE: 07.01.09

DRAWN BY: JLS

7/15/09
OK
JLS

REVISED EXTERIOR SIGNAGE

SK-01



S/F Main ID Logo Cabinet Elevation

Scale 1/2"=1'-0"

63 Sq Ft (2) Required

Specifications:

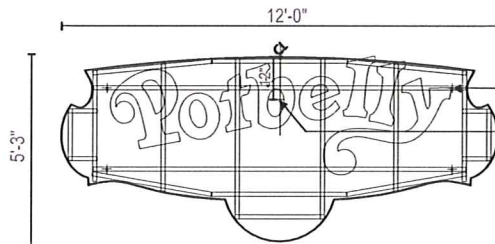
- 1) 1½" x 1½" x 1/8" steel tube inner frame with full welded construction. All welds chipped and primed all steel cleaned
- 2) .090 aluminum exterior sheeting finished with flat enamel paint.
- 3) "Potbelly" fabricated 5" deep aluminum returns with aluminum backs paint outside to match PMS 1545 paint inside letters white.
- 4) Illuminated with 15mm European yellow/ gold glass tubing.
- 5) Yellow Plexiglas faces with Jewelite retainers painted to match returns.
- 6) Stove faces to be Plexiglas with first surface applied translucent vinyl graphics internally illuminated with HO 800 MA daylight lamps.
- 7) Sandwich works faces to be matte finish Plexiglas with first surface applied translucent vinyl graphics internally illuminated with neon grid.
- 8) 20 amp snap type exterior disconnect switch in accessible area on back of sign (facing wall) with weather proof cover. Switch must be UL listed and approved.
- 9) UL listed and approved electrical box housing switch inside cabinet.
- 10) 3/4" EMT sleeve thru wall.
- 11) Flexible electrical conduit as per local code from junction box to EMT sleeve to be installed by sign installers.
- 12) UL listed and approved 20 amp snap switch disconnect provided by customer approved electrical contractor.
- 13) Conduit to primary source by customer approved electrical contractor.
- 14) All electrical primary to be no. 12 thwn.
- 15) Transformers as needed shielded in cabinet.
- 16) UL listed and approved high tension GTO wire.
- 17) Drain holes in letters and at base of display to be 1/4" diameter (not shown.)
- 18) Aluminum letters mounted to sign with aluminum self tapping screws.

End View

Scale 1/2"=1'-0"

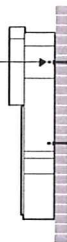


- " Fabricated aluminum face and filler prime and paint as illustrated.
- " "Potbelly" to be 5" deep Plexiglas face channel letters (see notes below.)
- " "Sandwich Works" and "Logo" to be rout out push thru ¾" thick pocketed white Plexiglas with first surface applied 3m translucent vinyl graphic colors (see noted below.) - Internally illuminated with ho 800 ma daylight fluorescent lamps.
- " Flat 1/8" thick routed face prime and painted outline, inset outlines and background as illustrated.



Cabinet Mounting and Electrical Detail Elevation

NOTE: CUSTOMER TO BE RESPONSIBLE FOR PROVIDING ADEQUATE ACCESS FOR THE INSTALLATION OF ALL SIGNS AND PROVIDING ADEQUATE WALL SURFACE FOR SUPPORTING AND MOUNTING SIGNS.



Electrical signs shall be listed per 1999 nec 600-3 to UL standard number 41 per F.S. 533-19. All signs grounded and bonded as per nec 600-7 and 250-95. All wiring inside sign will be no 12 thwn high tension insulated conductor as per nec 600-3-10-B. All circuits in-line fused as per sbc 4504.4-B) (3) primary electrical will be supplied to within 6 feet of sign by customers electrical contractor.

Color Match Swatches:

- PMS # 1235C 230-126 Sunflower Yellow
- PMS # 484C 230-63 Burgundy
- PMS #5615C 230-126 Emerald Green
- PMS #1545C 230-59 Brown
- PMS # 149C 230-005 Cream



DESIGN NUMBER

060037r5

SHEET

2 OF 3

DATE

March 20, 2006

ADDRESS

Novi Town Center

CITY / STATE

Novi, MI.

SALESMAN

TODD

ARTIST

JTS

APPROVALS

CLIENT

.

SALES

.

COORDINATOR

.

ART DEPT.

.

This document and the designs or information contained within are the sole property of National Awning and Sign, LLC and may not be copied, distributed or made available to others without permission.



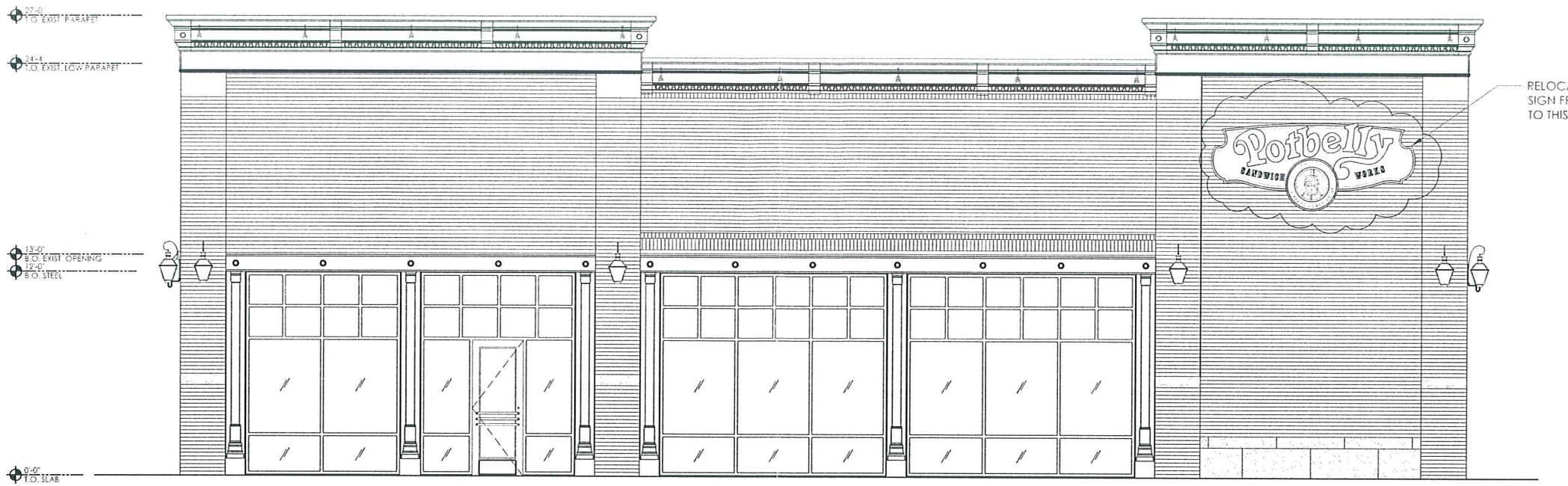
NATIONAL AWNING & SIGN

8 1 7 4 4 1 1 5 4 2





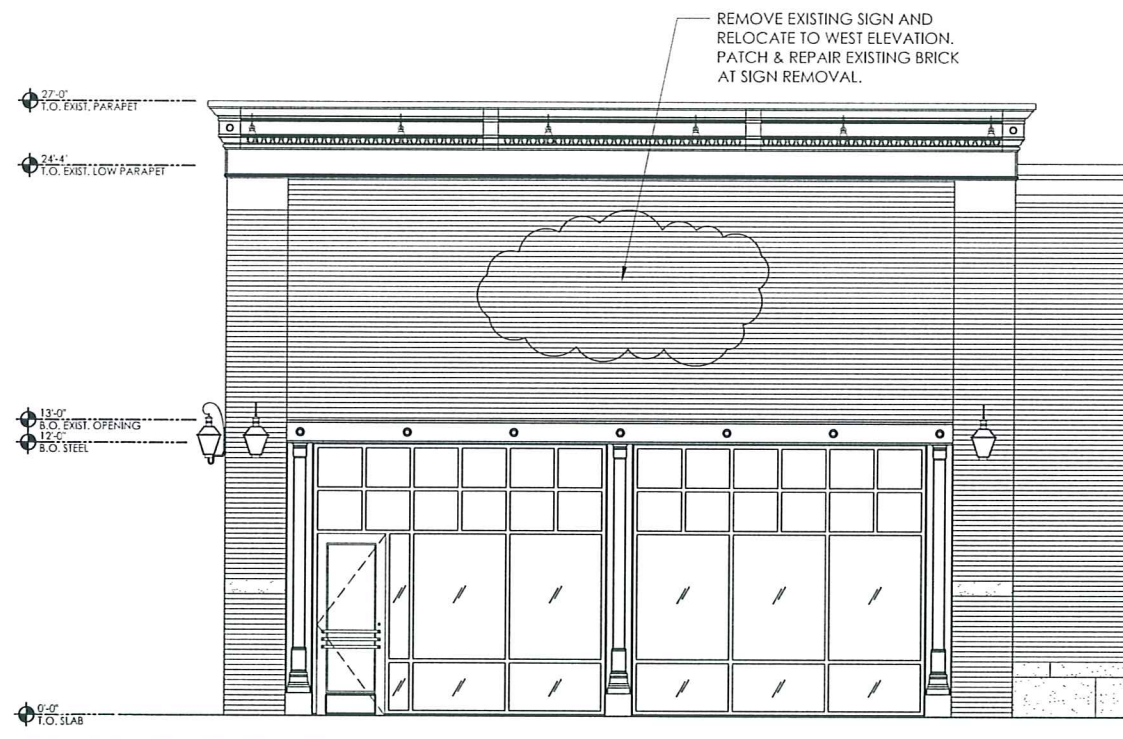




01 WEST ELEVATION



02 NORTH ELEVATION



03 SOUTH ELEVATION