

Fabricated aluminum cabinet with PMS 877c Grey painted finish. Routed out letter openings.

Pocket routed copy backed up with white acrylic with 1st surface brown dual color vinyl. Exact color of brown vinyl to be selected by customer. Illuminated with 800 MA H.O. lamps.

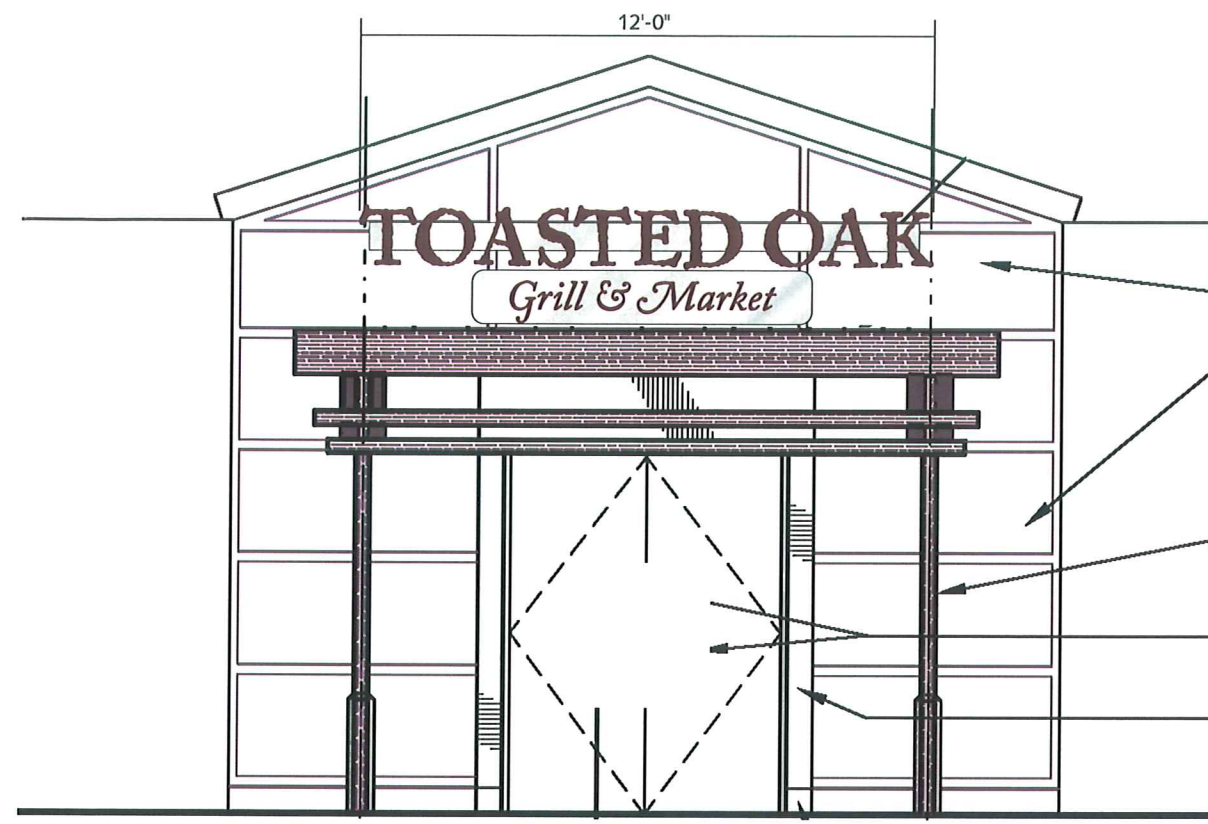
Aluminum reveal with a yellow painted finish.

Fabricated aluminum support cover with a PMS 877c Grey painted finish.

Foundation, sizes, depth to be determined by engineering and local codes and conditions

**G D F ELEVATION - D/F DIRECTIONAL SIGN** 7.5 Sq.Ft.  
3/4" = 1'-0" THREE (3) SIGNS REQUIRED

**END VIEW**  
3/4" = 1'-0"



**H ELEVATION**  
1/4" = 1'-0" ONE (1) SIGN REQUIRED

**NOTE:**  
VERIFY ALL BUILDING DIMENSIONS PERTINENT TO MANUFACTURING SIGN BEFORE FABRICATING SIGN



Fabricated aluminum channel letters. Outside returns painted PMS 4625c Brown. Interiors painted light enhancing white. 1" Jewelite retainers paint to match returns.

7328 White acrylic faces overlaid with brown dual color vinyl. Color to be selected by customer. Illuminated w/ White LED's

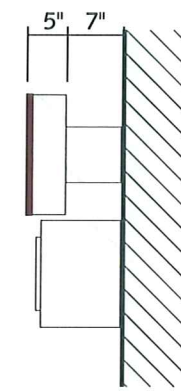
Letters mounted to aluminum raceway. Paint raceway Matthews "brushed" aluminum.

S/F sign aluminum cabinet painted Matthews "brushed" aluminum finish. Routed letter openings. Paint inside cabinet light enhancing white. Pocket routed copy backed up with white acrylic with 1st surface brown dual color vinyl. Exact vinyl color to be selected by customer.

Internally illuminated with 800 MA H.O. lamps.

26.57 Sq.Ft.

**H ELEVATION - S/F RESTAURANT WALL SIGN**  
1/2" = 1'-0" ONE (1) SIGN REQUIRED



**END VIEW**  
1/2" = 1'-0"



Design #  
09-0732r15

Sheet 2 of 8

Client  
RENAISSANCE HOTEL

Address  
27790 Novi Road  
Novi, MI

Account Rep. Bill Teel/Sara Maryann/Katii

Designer J. Bush

Date 4-3-09

Approval / Date

Client	
Sales	
Estimating	
Art	
Engineering	
Landlord	

Revision / Date

R11-|PC| 4Feb10 |

R12-|PC| 5Feb10 |

R13-|PC| 11Feb10 |

R14-|PC| 11Feb11 |

R5-|PC| 30Jan09 | increase size of logo, add new sign

R6-|PC| 19Nov09 | change pylon to monument

R7-|p| Add restaurant copy "Toasted Oak" to signs /Add signs "T" & "J" 12-16-09

R8/MRG/12-28-09/ add "THE BARONETTE" sub copy to "A"

R9-|p| Increase "A" to 40sq ft/ Chg layout 1-13-10



www.chandler signs.com

3201 Manor Way Dallas, TX 75235  
214-902-2000 Fax 214-902-2044

12106 Valliant San Antonio, TX 78216  
210-349-3804 Fax 210-349-8724

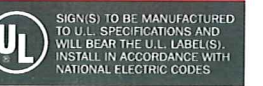
2420 Vista Way Ste. 200  
Oceanside, CA 92054  
760-967-7003 Fax 760-967-7033

750 E. Hwy. 24 - Bldg. 2 Ste. 200  
Woodland Park, CO 80863  
719-687-2507 Fax 719-687-2506

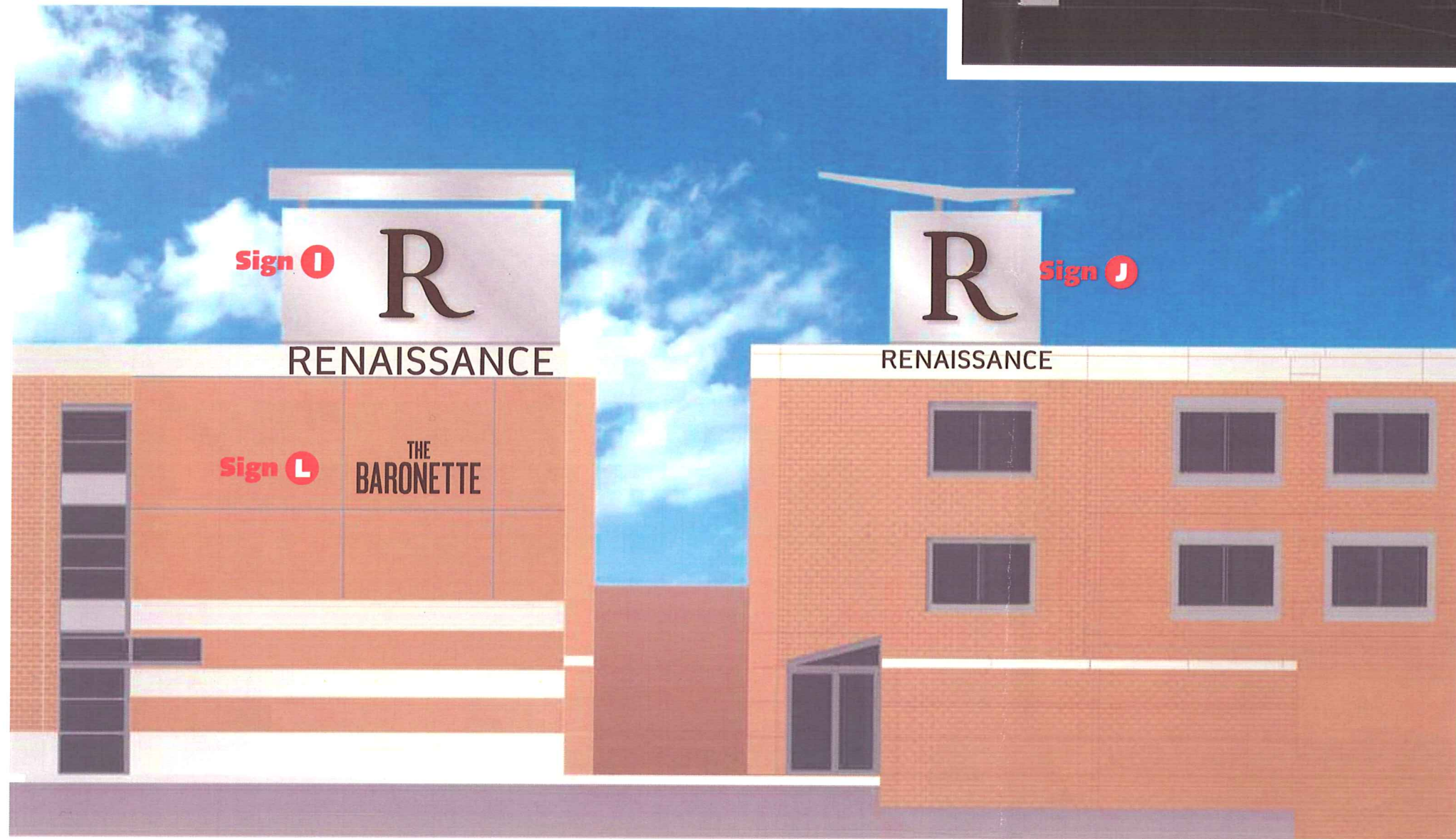
P.O. Box 43123 Louisville, KY 40253  
502-489-3660 Fax 502-254-3843

This drawing is the property of Chandler Signs, L.P. and all rights to its use for reproduction are reserved by Chandler Signs, L.P.

**FINAL ELECTRICAL CONNECTION BY CUSTOMER**



SIGN(S) TO BE MANUFACTURED TO U.L. SPECIFICATIONS AND WILL BEAR THE U.L. LABEL(S). INSTALL IN ACCORDANCE WITH NATIONAL ELECTRICAL CODES



No Scale

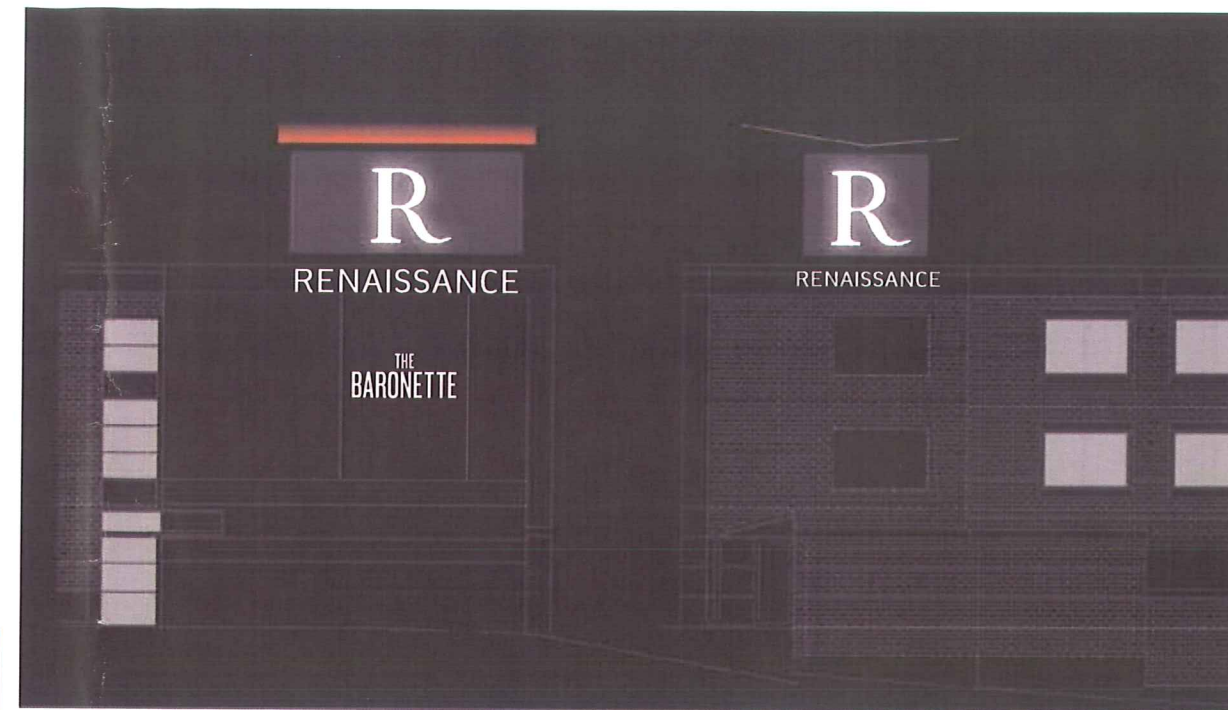


PHOTO - NIGHT VIEW



**RENAISSANCE**

Design #

09-0732r15

Sheet 5 of 8

Client

RENAISSANCE HOTEL

Address

27790 Novi Road

Novi, MI

Account Rep. Bill Teel/Sara Maryann/Katii

Designer J. Bush

Date 4-3-09

Approval / Date

Client	
Sales	
Estimating	
Art	
Engineering	
Landlord	

Revision / Date

R11-|PC| 4Feb10 |

R12-|PC| 5Feb10 |

R13-|PC| 11Feb10 |

R14-|PC| 11Feb11 |

R5-|PC| 200-109 | increase size of logo, add new sign

R6-|PC| 19Nov09 | change pylon to monument

R7/jb Add restaurant copy "Toasted Oak" to signs /Add signs "I" & "J" 12-16-09

R8/MRG/12-28-09/ add "THE BARONETTE" sub copy to "A"

R9/jb Increase "A" to 40sq ft / Chg layout 1-13-10



www.chandlersigns.com

3201 Manor Way Dallas, TX 75235  
214-902-2000 Fax 214-902-2044

12106 Valliant San Antonio, TX 78216  
210-349-3804 Fax 210-349-8724

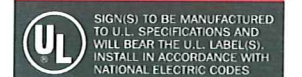
2420 Vista Way Ste. 200  
Oceanside, CA 92054  
760-967-7003 Fax 760-967-7033

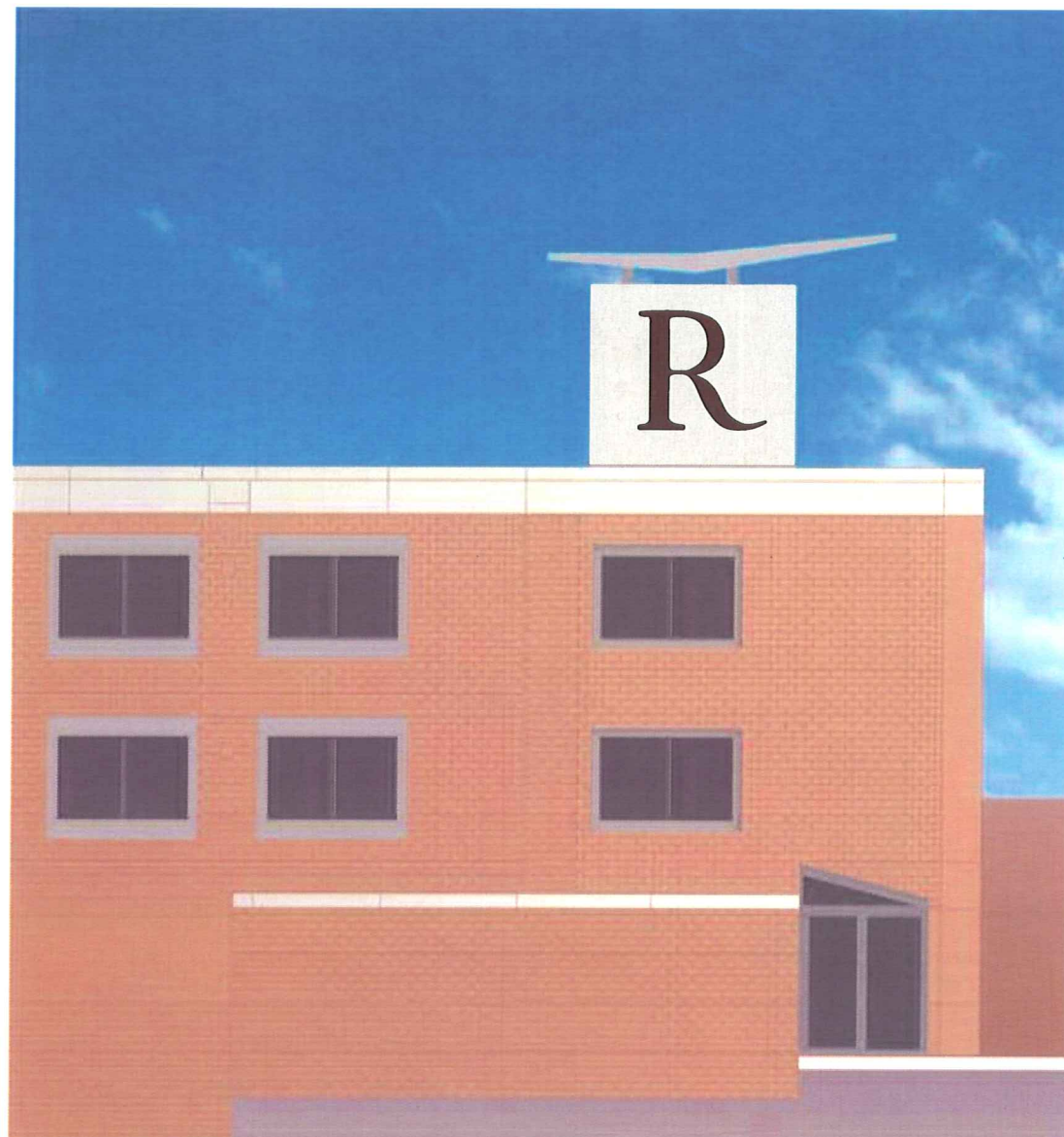
750 E. Hwy. 24 - Bldg. 2 Ste. 200  
Woodland Park, CO 80863  
719-687-2507 Fax 719-687-2506

P.O. Box 43123 Louisville, KY 40253  
502-489-3660 Fax 502-254-3843

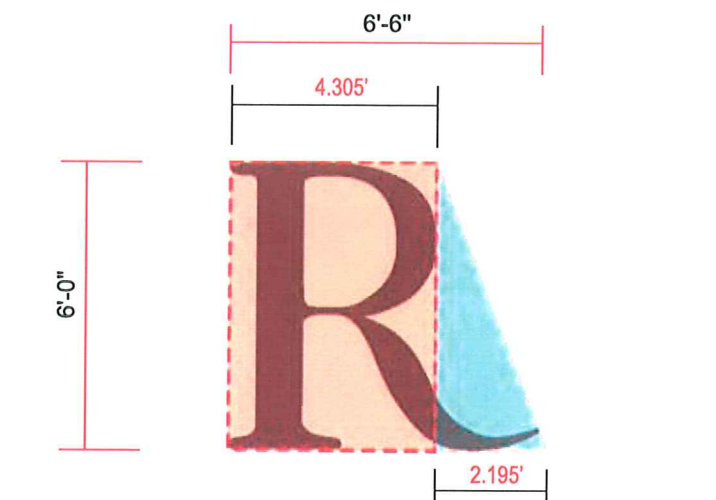
This drawing is the property of Chandler Signs, L.P. and all rights to its use for reproduction are reserved by Chandler Signs, L.P.

**FINAL ELECTRICAL CONNECTION BY CUSTOMER**





Sign **K**



Sign **K** LETTER DISPLAY 1/4" = 1'-0"

Manufacture and install one set letters.

32.42 Sq.Ft.

**Returns:**  
 .040 aluminum returns, painted PMS 4625c Brown. Interior of logo to be painted with white light enhancing paint.

**Retainers:**  
 1" Jewelite retainers paint to match returns.

**Face:**  
 7328 White acrylic faces overlaid with brown dual color vinyl, color to be selected by customer.

**Illumination:**  
 White LED's

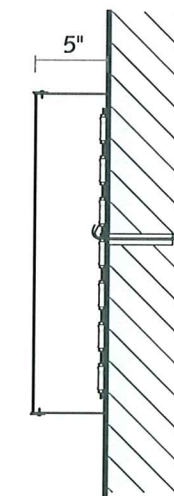
Weep holes at low points.

**Power Supplies:**  
 LED power supplies mounted behind wall in accessible location

**Ltr. & Logo Sec.** nts

**U.L. LABELS REQUIRED**  
 INSTALL IN ACCORDANCE W/NEC

**Letter & Logo Section** nts



RENAISSANCE

Design #

09-0732r15

Sheet 6 of 8

Client

RENAISSANCE HOTEL

Address

27790 Novi Road

Novi, MI

Account Rep. Bill Teel/Sara Maryann/Katii

Designer J. Bush

Date 4-3-09

Approval / Date

Client	
Sales	
Estimating	
Art	
Engineering	
Landlord	

Revision / Date

R11-|PC| 4Feb10 |

R12-|PC| 5Feb10 |

R13-|PC| 11Feb10 |

R14-|PC| 11Feb11 |

R5-|PC| 30Oct09 | increase size of logo, add new sign

R6-|PC| 19Nov09 | change pylon to monument

R7|b Add restaurant copy "Toasted Oak" to signs /Add signs "I" & "J" 12-16-09

R8|MRG|12-28-09| add "THE BARONETTE" sub copy to "A"

R9|b Increase "A" to 40sq.ft./ Chg layout 1-13-10



www.chandler signs.com

3201 Manor Way Dallas, TX 75235  
 214-902-2000 Fax 214-902-2044

12106 Yalliant San Antonio, TX 78216  
 210-349-3804 Fax 210-349-8724

2420 Vista Way Ste. 200  
 Oceanside, CA 92054  
 760-967-7003 Fax 760-967-7033

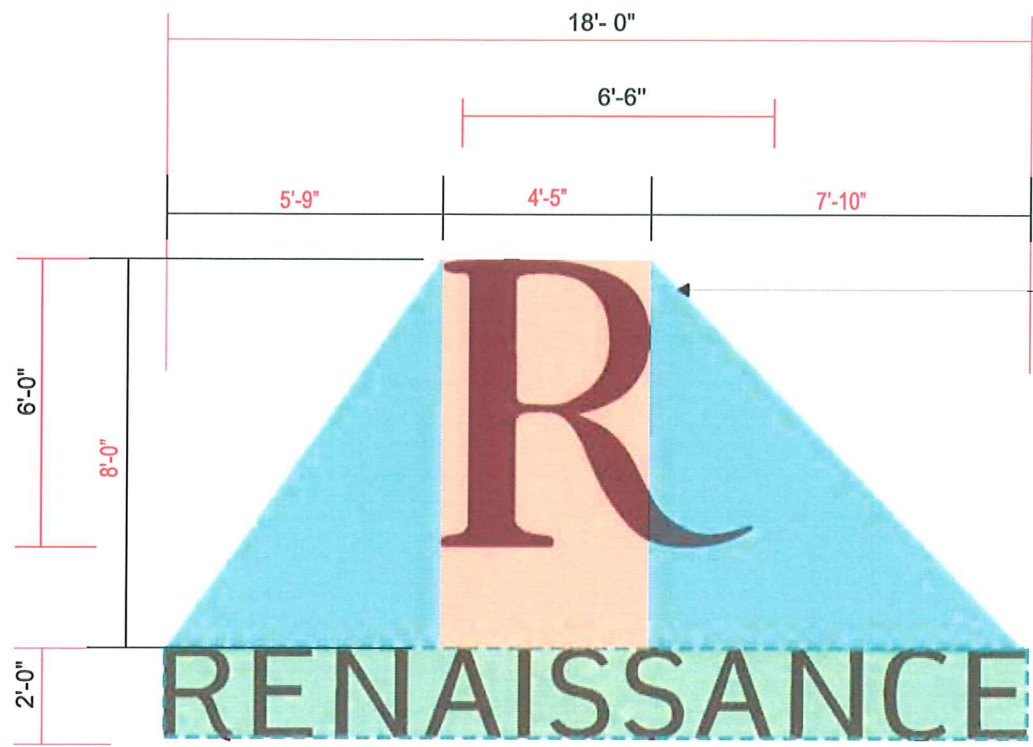
750 E. Hwy. 24 - Bldg. 2 Ste. 200  
 Woodland Park, CO 80863  
 719-687-2507 Fax 719-687-2506

P.O. Box 43123 Louisville, KY 40253  
 502-489-3660 Fax 502-254-3843

This drawing is the property of Chandler Signs, L.P. and all rights to its use for reproduction are reserved by Chandler Signs, L.P.

**FINAL ELECTRICAL CONNECTION BY CUSTOMER**





125.67 Sq.Ft.

### I LETTER & LOGO DISPLAY

1/4" = 1' - 0"

Manufacture and install one (1) logo and one (1) set of letters.

Fabricated aluminum channel letters. Outside returns painted PMS 4625c Brown. Interiors painted light enhancing white. 1" Jewelite retainers paint to match returns.

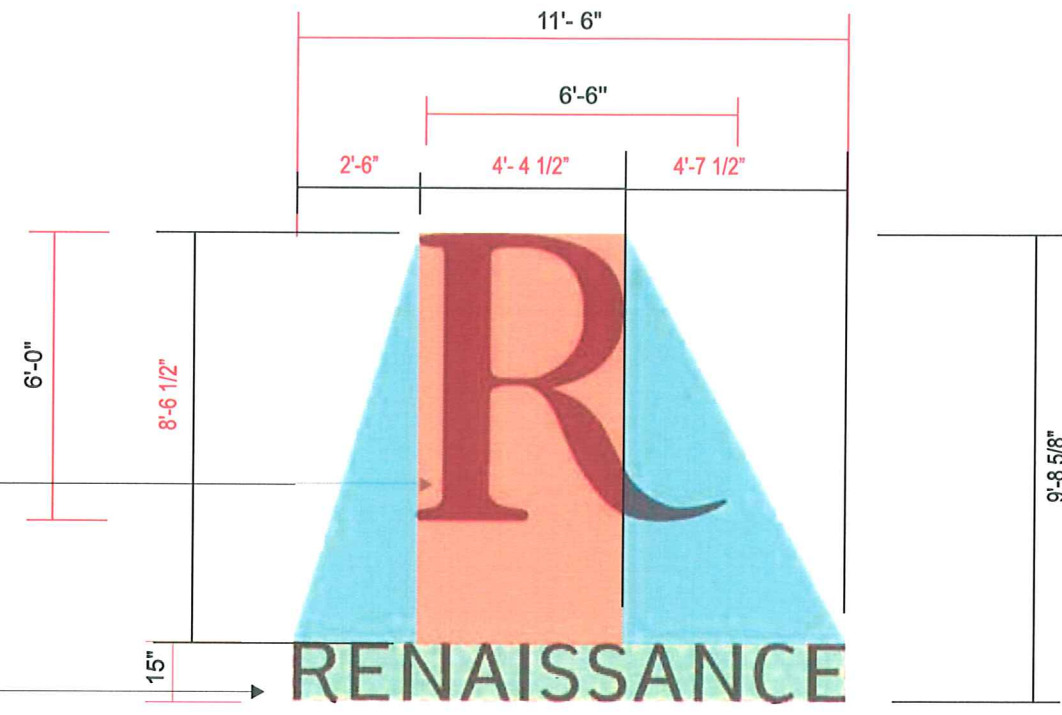
7328 White acrylic faces overlaid with brown dual color vinyl. Color to be selected by customer. Illuminated w/ White LED's

Remote power supplies located behind wall in accessible location (verify)

Fabricated aluminum channel letters. Outside returns painted PMS 4625c Brown. Interiors painted light enhancing white. 1" Jewelite retainers paint to match returns.

7328 White acrylic faces overlaid with brown dual color vinyl. Color to be selected by customer. Illuminated w/ White LED's

Remote power supplies located behind wall in accessible location (verify)

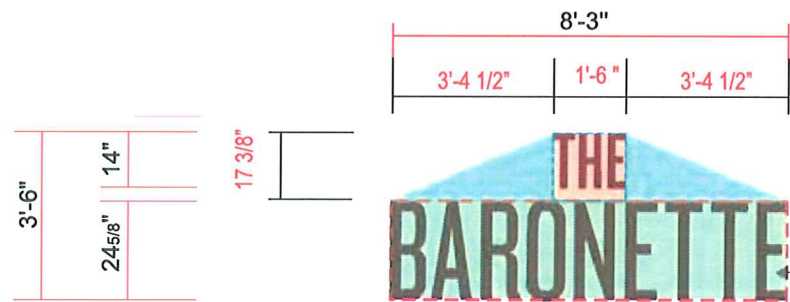


82.18 Sq.Ft.

### J LETTER & LOGO DISPLAY

1/4" = 1' - 0"

Manufacture and install two (2) logos and two (2) sets of letters.



23.98 Sq.Ft.

### L LETTER & LOGO DISPLAY

1/4" = 1' - 0"

Manufacture and install one (1) logo and one (1) set of letters.

Fabricated aluminum channel letters. Outside returns painted PMS 4625c Brown. Interiors painted light enhancing white. 1" Jewelite retainers paint to match returns.

7328 White acrylic faces overlaid with brown dual color vinyl. Color to be selected by customer. Illuminated w/ White LED's

Remote power supplies located behind wall in accessible location (verify)

**NOTE:**  
VERIFY ALL BUILDING DIMENSIONS PERTINENT TO MANUFACTURING SIGN BEFORE FABRICATING SIGN

**Returns:**  
.040 aluminum returns. painted PMS 4625c Brown. Interior of logo to be painted with white light enhancing paint.

**Retainers:**  
1" Jewelite retainers paint to match returns.

**Face:**  
7328 White acrylic faces overlaid with brown dual color vinyl, color to be selected by customer.

**Illumination:**  
White LED's

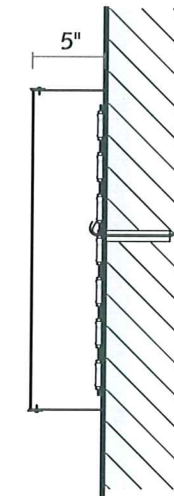
Weep holes at low points.

**Power Supplies:**  
LED power supplies mounted behind wall in accessible location

**Ltr. & Logo Sec.** nts

**U.L. LABELS REQUIRED**  
INSTALL IN ACCORDANCE W/NEC

**Letter & Logo Section** nts



RENAISSANCE

Design #

09-0732r15

Sheet 7 of 8

Client

RENAISSANCE HOTEL

Address

27790 Novi Road

Novi, MI

Account Rep. Bill Teel/Sara Maryann/Katii

Designer J. Bush

Date 4-3-09

Approval / Date

Client	
Sales	
Estimating	
Art	
Engineering	
Landlord	

Revision / Date

R11-IPC| 4Feb10 |

R12-IPC| 5Feb10 |

R13-IPC| 11Feb10 |

R14-IPC| 11Feb11 |

R15-IPC| 11Feb11 |

R6-IPC| 19Nov09 | change pylon to monument  
R7/fo Add restaurant copy "Toasted Oak" to signs /Add signs "T" & "J" 12-18-09  
R8/MRG/12-28-09/ add "THE BARONETTE" sub copy to "A"  
R9/fo Increase "A" to 40sq.ft./ Chg layout 1-13-10



www.chandler signs.com

3201 Manor Way Dallas, TX 75235  
214-902-2000 Fax 214-902-2044

12106 Valliant San Antonio, TX 78216  
210-349-3804 Fax 210-349-8724

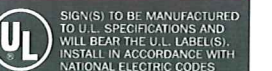
2420 Vista Way Ste. 200  
Oceanside, CA 92054  
760-967-7003 Fax 760-967-7033

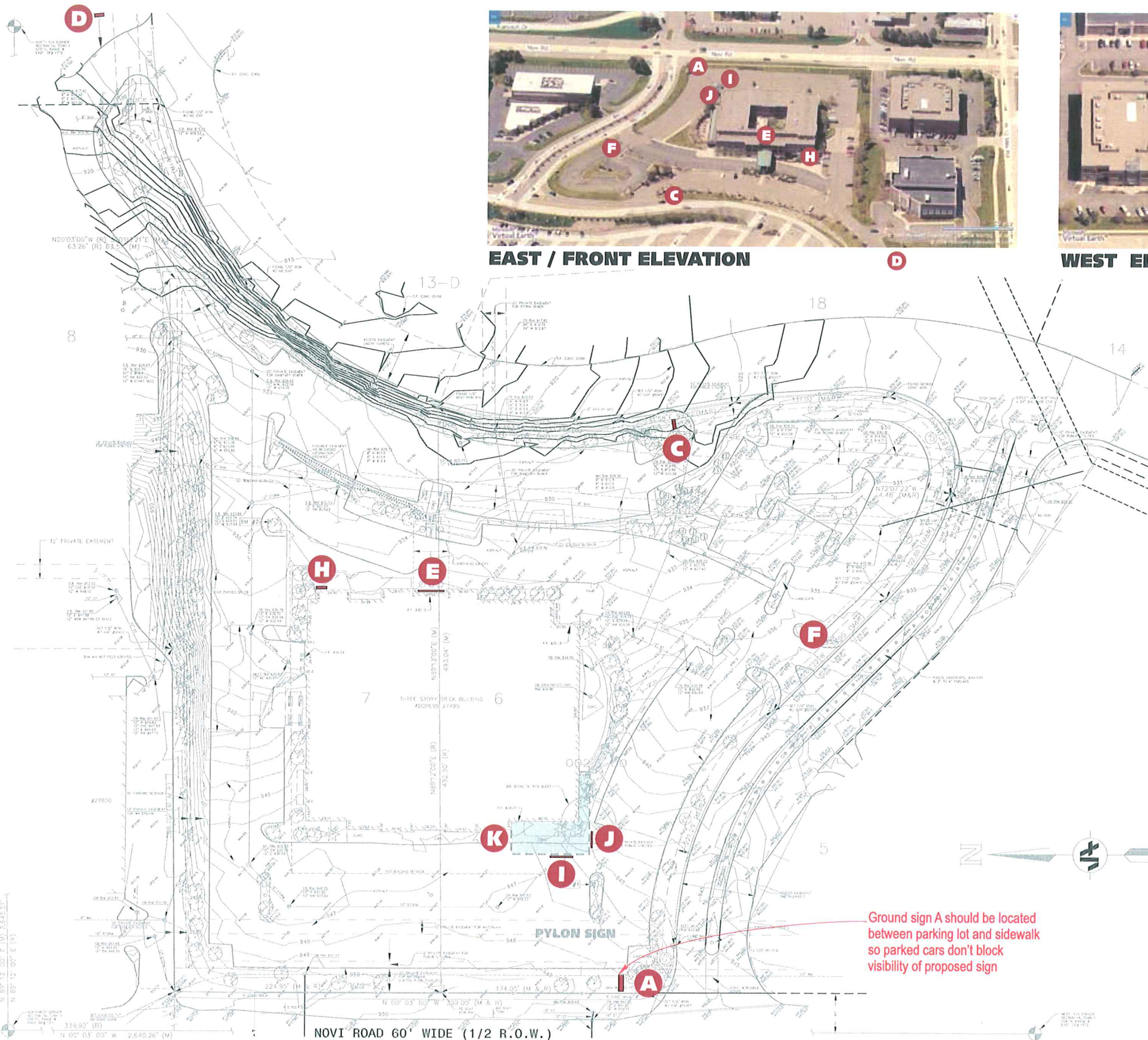
750 E. Hwy. 24 - Bldg. 2 Ste. 200  
Woodland Park, CO 80863  
719-687-2507 Fax 719-687-2506

P.O. Box 43123 Louisville, KY 40253  
502-489-3660 Fax 502-254-3843

This drawing is the property of Chandler Signs, L.P. and all rights to its use for reproduction are reserved by Chandler Signs, L.P.

**FINAL ELECTRICAL CONNECTION BY CUSTOMER**





**EAST / FRONT ELEVATION**



**WEST ELEVATION**

**NOTE:**  
 VERIFY ALL BUILDING DIMENSIONS  
 PERTINENT TO MANUFACTURING  
 SIGN BEFORE FABRICATING SIGN



**RENAISSANCE**

Design #  
**09-0732r15**  
 Sheet **8** of **8**

Client  
**RENAISSANCE HOTEL**  
 Address  
**27790 Novi Road**  
**Novi, MI**

Account Rep. **Bill Teel/Sara Maryann/Katij**  
 Designer **J. Bush**  
 Date **4-3-09**

Approval / Date	
Client	
Sales	
Estimating	
Art	
Engineering	
Landlord	

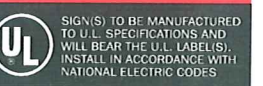
Revision / Date	
R11- PC	4Feb10
R12- PC	5Feb10
R13- PC	11Feb10
R14- PC	11Feb11
R5- PC	20-09   increase size of logo, add new sign
R6- PC	19Nov09   change pylon to monument
R7/b	Add restaurant copy "Toasted Oak" to signs / Add signs "I" & "J" 12-16-09
R8/MRG	12-28-09 / add "THE BARONETTE" sub copy to "A"
R9/b	Increase "A" to 40sq.ft. / Chg layout 1-13-10



3201 Manor Way Dallas, TX 75235  
 214-902-2000 Fax 214-902-2044  
 12106 Valliant San Antonio, TX 78216  
 210-349-3804 Fax 210-349-8724  
 2420 Vista Way Ste. 200  
 Oceanside, CA 92054  
 760-967-7003 Fax 760-967-7033  
 750 E. Hwy. 24 - Bldg. 2 Ste. 200  
 Woodland Park, CO 80863  
 719-687-2507 Fax 719-687-2506  
 P.O. Box 43123 Louisville, KY 40253  
 502-489-3660 Fax 502-254-3843

This drawing is the property of Chandler Signs, L.P. and all rights to its use for reproduction are reserved by Chandler Signs, L.P.

**FINAL ELECTRICAL CONNECTION BY CUSTOMER**



**SITE PLAN**

N.T.S.