

LOT LINE

BEAM Double 2x10" 5' SPAN

Joist 2x8" 16" O.C.

WET LANDS

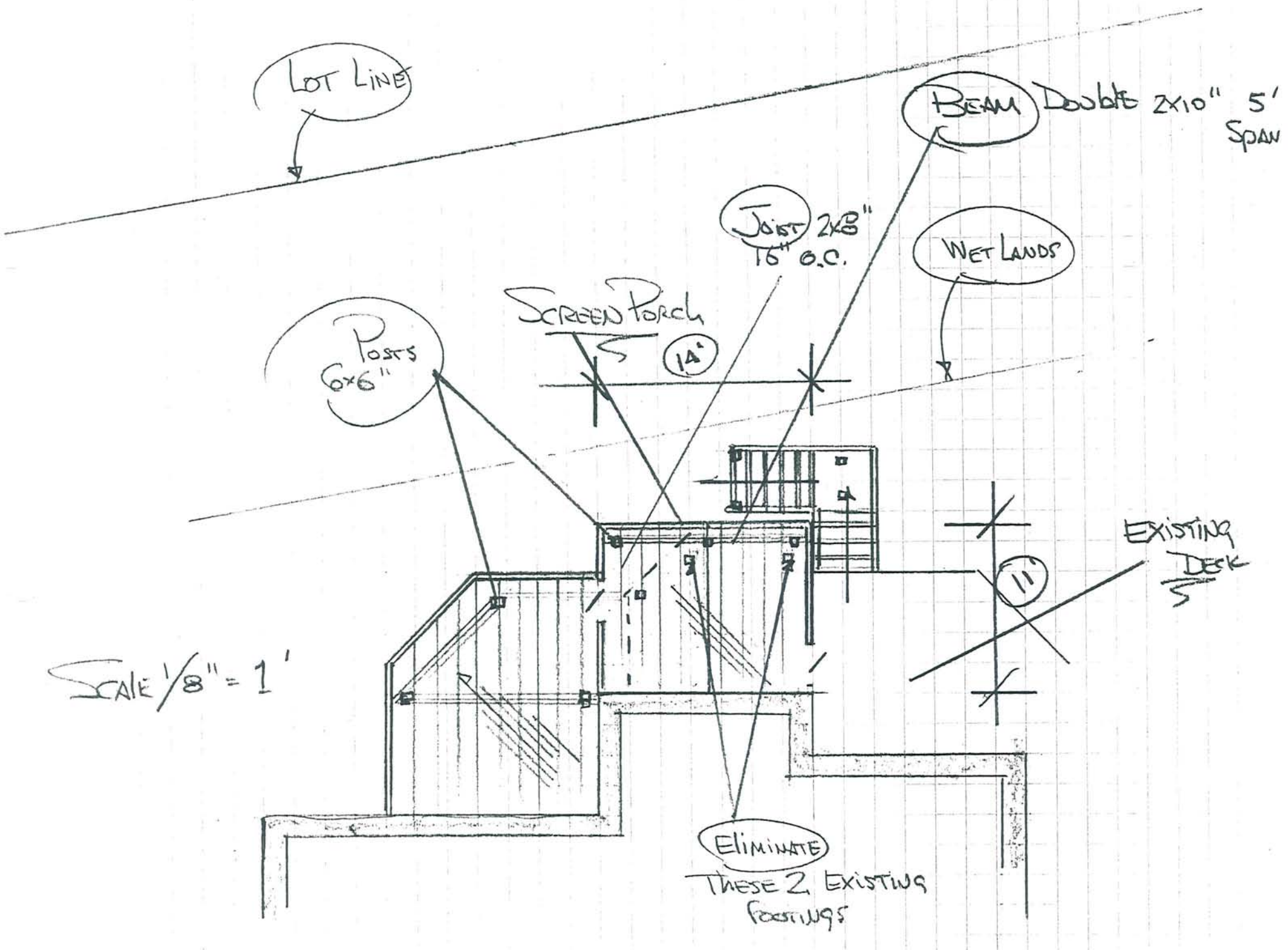
Posts 6x6"

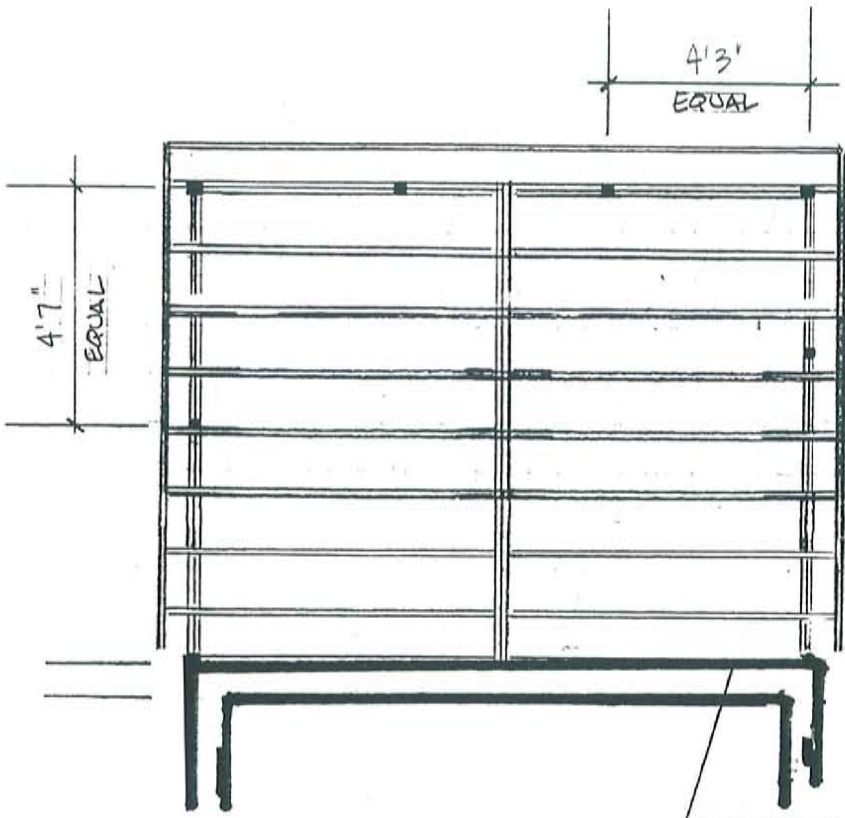
SCREEN PORCH 14"

EXISTING DECK

ELIMINATE THESE 2 EXISTING FOOTINGS

SCALE 1/8" = 1'

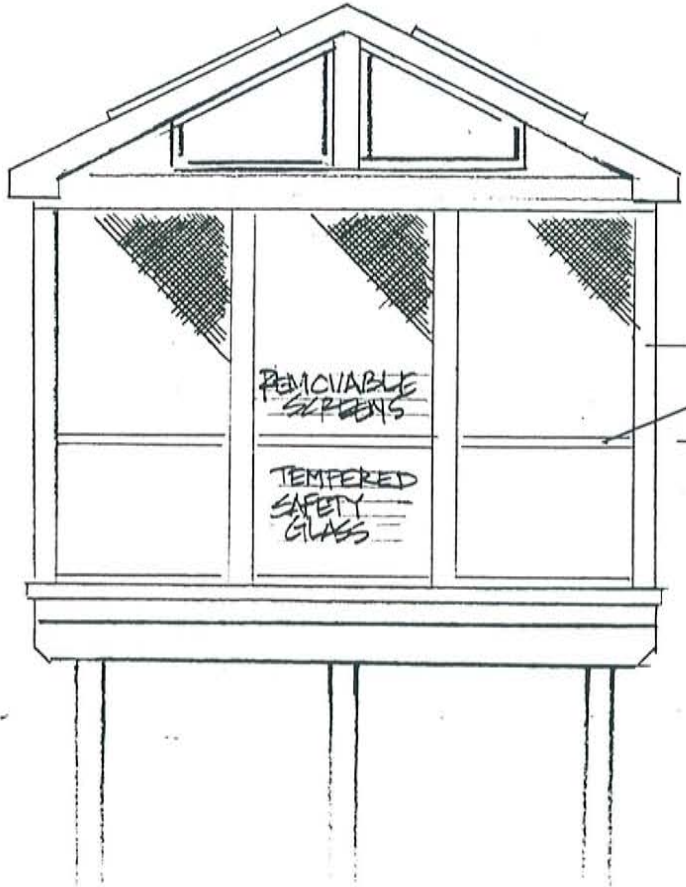
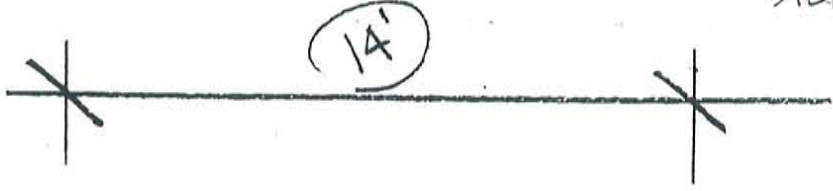




FRAME: 4x4 CEDAR POSTS WITH  
 (2) 2x8 HEADER (TYP.) (2) 2x12  
 RIDGE WITH 2x6 PARTERS @ 16"  
 O.C. (TYP.) 7/16" O.S.B. SHEETING  
 WITH ICE AND WATER SHIELD, 15#  
 FELT PAPER, DRIP EDGE AND  
 SHINGLES TO MATCH, CONTINUOUS  
 RIDGE VENT, SOFFIT VENTS  
 AND 1x P.S. CEDAR TRIM.  
 COLLAR TIES ON PARTERS

FRAME DETAIL SCALE 1/4" = 1'<sup>12</sup>

STEP FLASHING AT ROOF

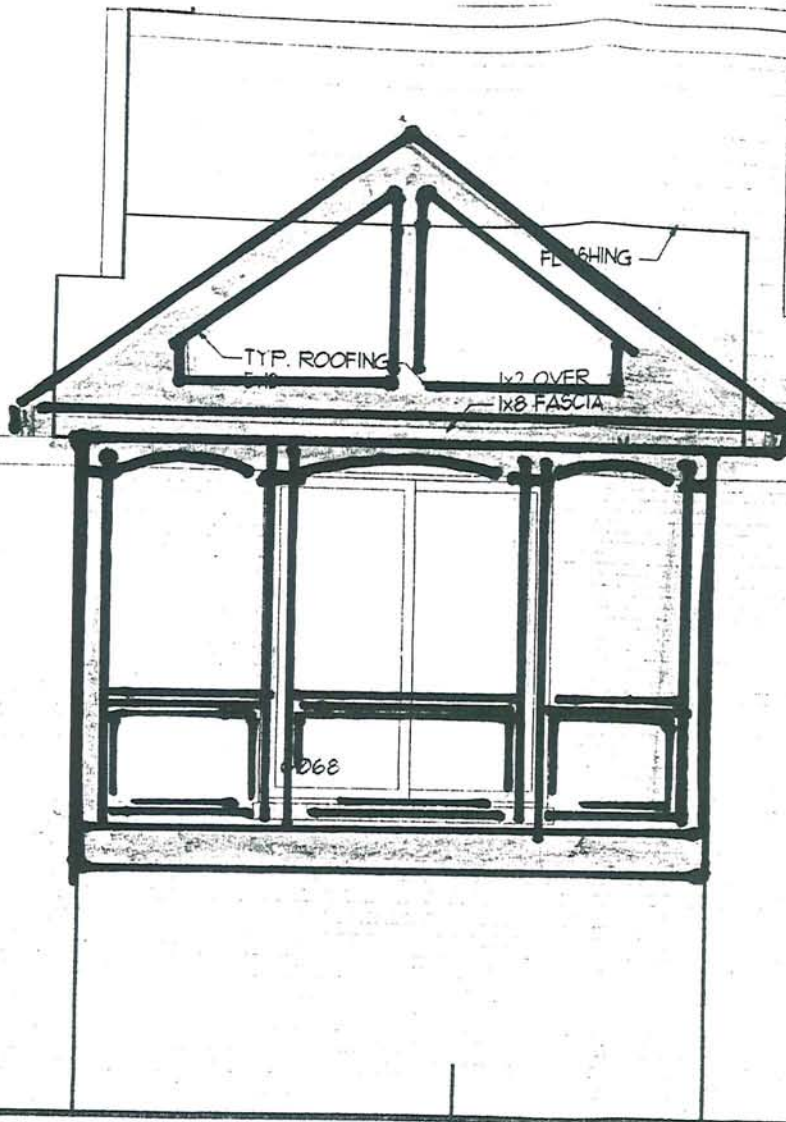
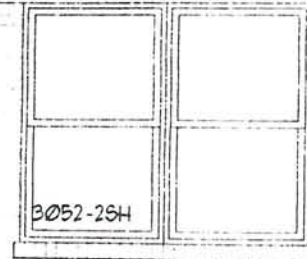
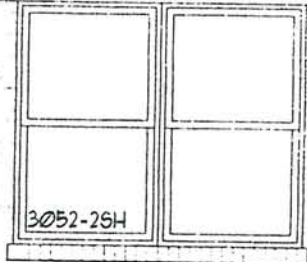
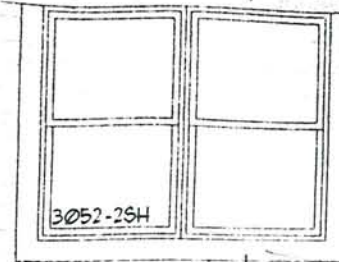
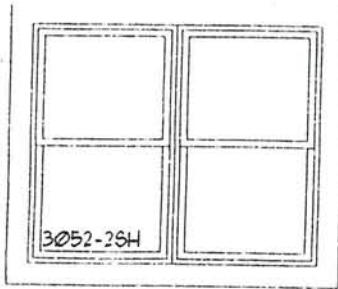


1x6 P.S. CEDAR  
 1x3 P.S. CEDAR

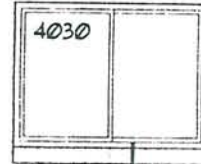
30"

FRONT ELEVATION

SCALE 1/4" = 1'<sup>12</sup>



TYP. SIDING

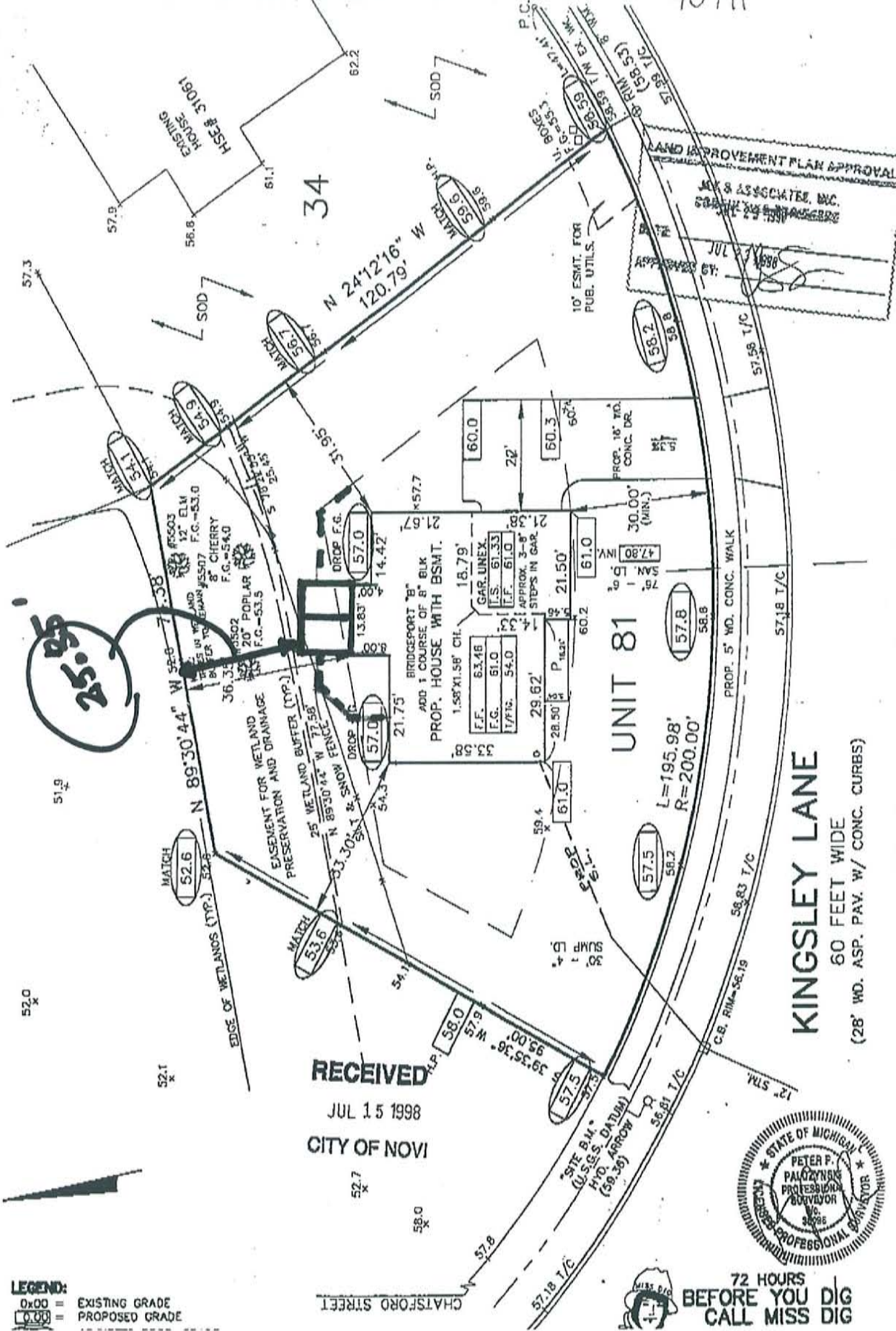


AR ELEVATION "A"

1"=1'-0"



19F071



LAND IMPROVEMENT PLAN APPROVAL  
 JAY & ASSOCIATES, INC.  
 6000 W. WATKINS ST.  
 TROY, MI 48063  
 APPROVED BY: [Signature]  
 JUL 17 1998

RECEIVED  
 JUL 15 1998  
 CITY OF NOVI



**KINGSLEY LANE**  
 60 FEET WIDE  
 (28' WD. ASP. PAV. W/ CONC. CURBS)

72 HOURS  
 BEFORE YOU DIG  
 CALL MISS DIG

**LEGEND:**  
 0x00 = EXISTING GRADE  
 0.00 = PROPOSED GRADE