



**CITY OF NOVI CITY COUNCIL
NOVEMBER 9, 2020**

SUBJECT: Approve a cost share with Detroit Catholic Central for a new traffic signal at their entryway on Wixom Road in the amount of \$86,645.

SUBMITTING DEPARTMENT: City Manager

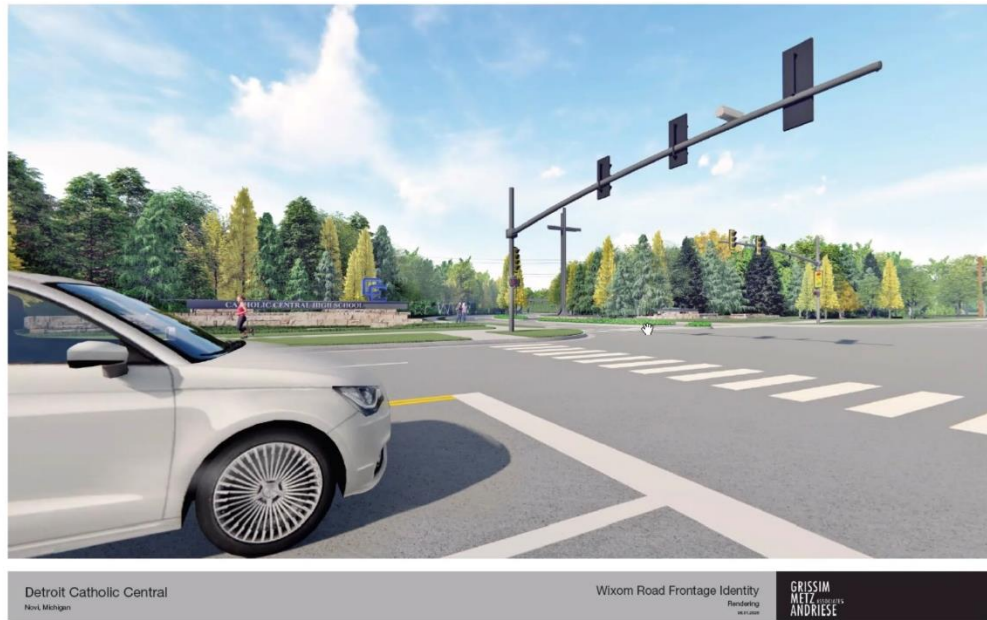
EXPENDITURE REQUIRED	\$ \$86,645
AMOUNT BUDGETED	\$ 0
APPROPRIATION REQUIRED	\$ \$86,645
LINE ITEM NUMBER	202-202.00-865.214

BACKGROUND INFORMATION: Detroit Catholic Central High School (DCC) is in the process of reconstructing their entryways and road frontage along Wixom Road. One of their entry points has a traffic signal that services the Target/Sam's Club parking lots to the east. As a part of the redesign, DCC has proposed a transition from the wired box span design (fig 1.), to a more modern mastarm design (fig 2.) which mirrors the look of several other intersections throughout the City. DCC Officials have approached the City with the hopes of sharing the cost of the redesign.

Figure 1



Figure 2

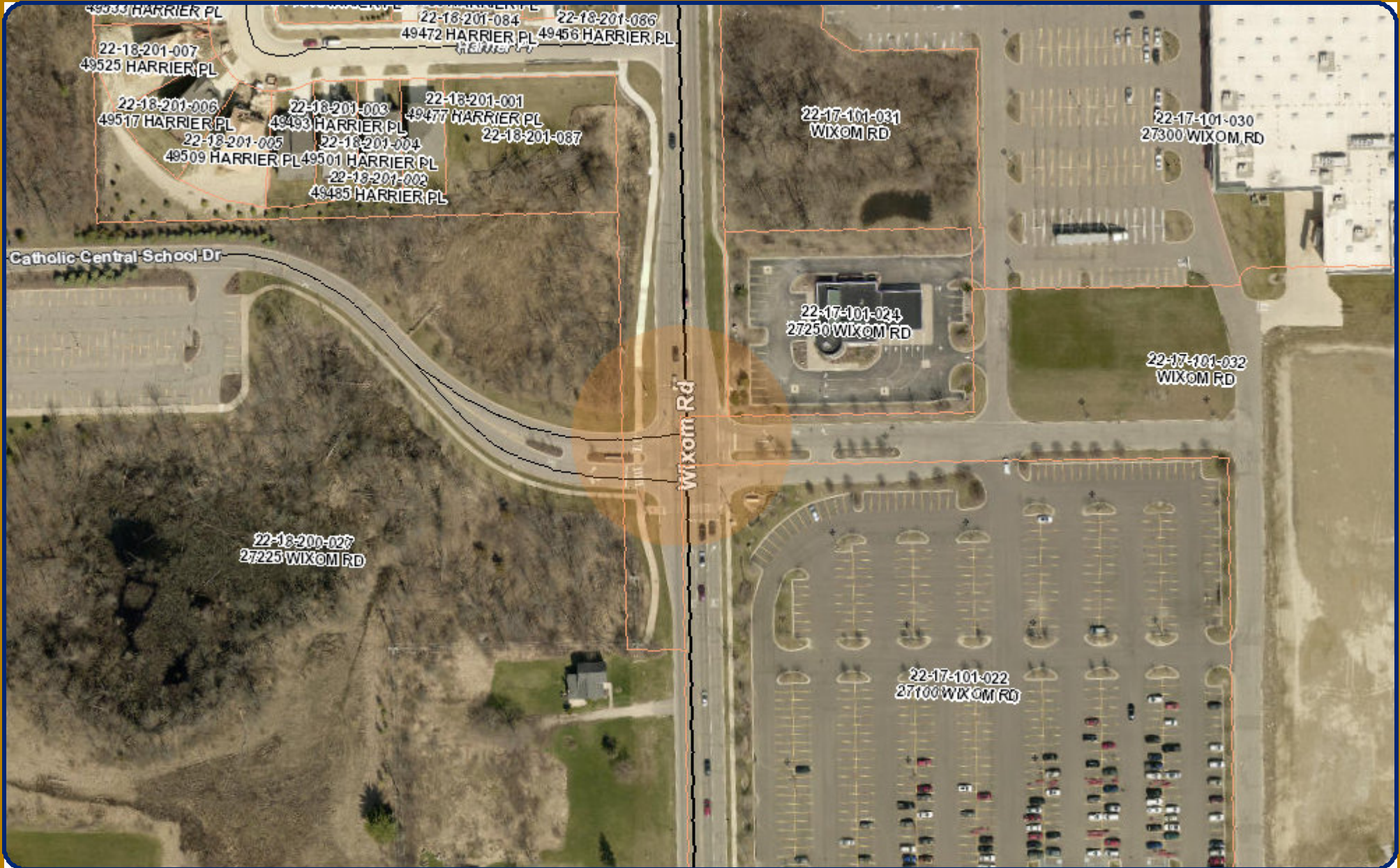


The redesign was presented to the Zoning Board of Appeals and received unanimous approval in April this year. Some intersection improvements were included in the City's Capital Improvement Program as part of Wixom Road's reconstruction in 2022/23. The reconstruction planned for FY 22/23 included new sidewalks, ADA ramps, and pedestrian push buttons, etc.

City staff estimated the improvements would cost in the \$150,000 range in the future budget year (\$110,000 in current year construction estimates). The proposed DCC design and construction, which is over and above what the City would build in the future, has been estimated at \$234,000. DCC officials and City staff propose a cost share of \$86,645 toward DCC's mastarm as the City has already committed \$24,500 to the sidewalk improvements with a total contribution of \$111,145; well below the estimated costs for intersection modernization in FY 2022/23.

RECOMMENDED ACTION: Approve a cost share with Detroit Catholic Central for a new traffic signal at their entryway on Wixom Road in the amount of \$86,645.

Detroit Catholic Central Intersection Mobilization



MAP INTERPRETATION NOTICE

Map information depicted is not intended to replace or substitute for any official or primary source. This map was intended to meet National Map Accuracy Standards and use the most recent, accurate sources available to the people of the City of Novi. Boundary measurements and area calculations are approximate and should not be construed as survey measurements performed by a licensed Michigan Surveyor as defined in Michigan Public Act 132 of 1970 as amended. Please contact the City GIS Manager to confirm source and accuracy information related to this map.



1 inch = 188 feet



Map Print Date:
11/5/2020



City of Novi

45175 Ten Mile Rd
Novi, MI 48375
cityofnovi.org