



CITY OF NOVI CITY COUNCIL
SEPTEMBER 25, 2023

SUBJECT: Consideration of Approval of Change Order No. 7 to Pamar Enterprises, Inc. for the replacement of damaged curb along Roethel Drive during the water main replacement project in the amount of \$186,315.56.

SUBMITTING DEPARTMENT: Department of Public Works – Engineering Division

EXPENDITURE REQUIRED	\$ 186,315.56
AMOUNT BUDGETED	\$ 1,746,788.00
APPROPRIATION REQUIRED	\$ 0
LINE ITEM NUMBER	592-536.00-976.124

BACKGROUND INFORMATION:

City Council recently approved a change order to the 2022 Water Main Replacement program for the replacement of ductile iron water main along Roethel Drive (July 31, 2023). The City's engineering consultant, Spalding DeDecker, brought to staff's attention that much of the curb along Roethel Drive has extensive cracking and patching. The water main replacement plans require the removal and replacement of pavement on Roethel Drive since the water main will be constructed under the pavement due to limited right-of-way space. Currently, the plans call for replacement of segments of curb where water service connections and utility crossings occur. However, given the poor condition of the remaining curb, it would be prudent to replace the damaged curb as part of the restoration work.

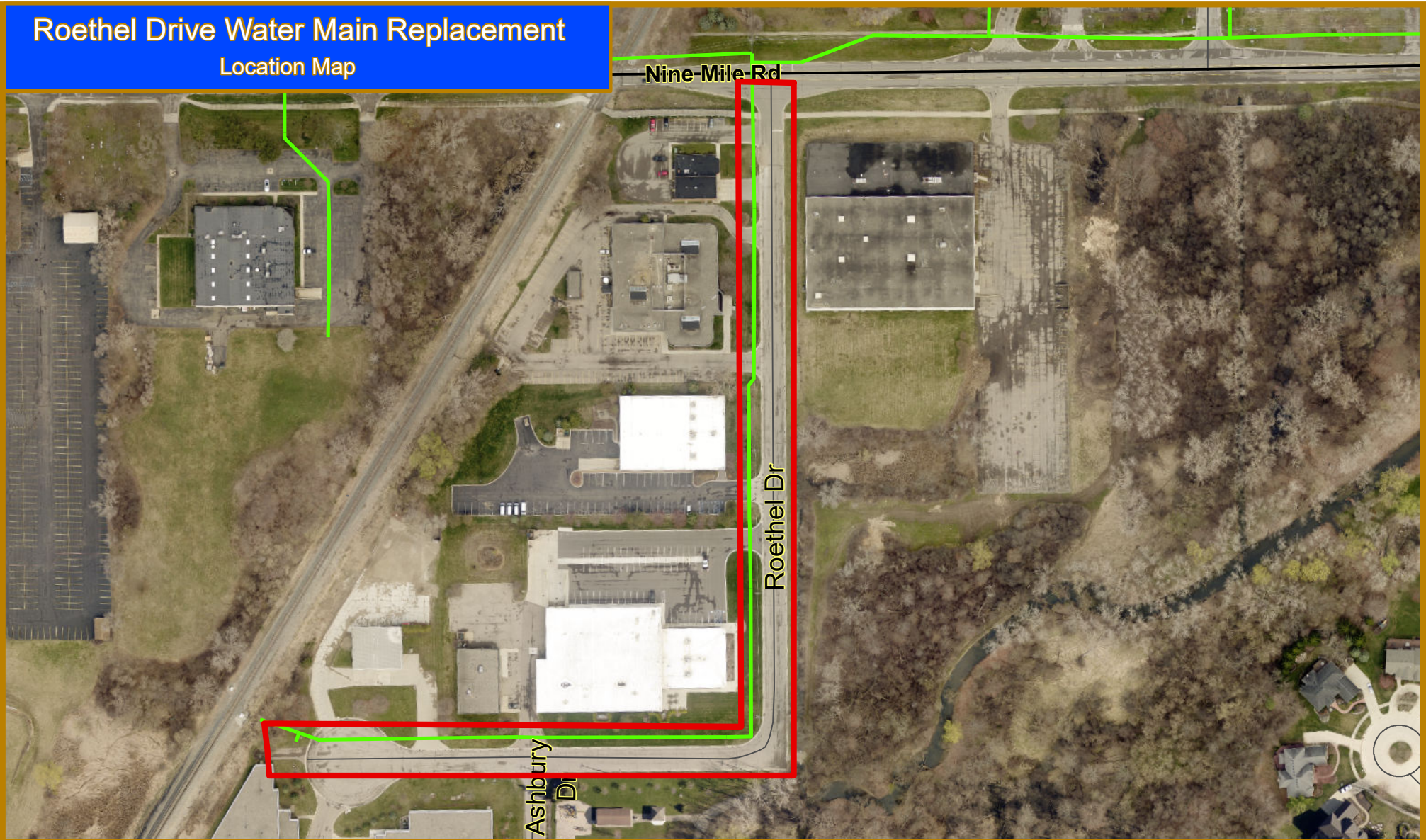
The contract administration and geotechnical engineering services related to this project addition will be added to the existing purchase orders using the fee percentages in the Agreements for Professional Engineering Services and Geotechnical Engineering Services for Public Projects. Construction for Roethel Drive water main replacement started on September 18, 2023.

Spalding DeDecker		
Contract Administration	5% of the Change Order value (\$186,315.56 x .05)	\$ 9,315.78
Crew Days	\$800 daily inspection fee x 10 days	\$ 8,000
G2 Consulting Group, Inc. (G2)		
Material testing services	1.9% of the Change Order value (\$186,315.56 X 0.019)	\$ 3,540

RECOMMENDED ACTION: Approval of Change Order No. 7 to Pamar Enterprises, Inc. for the replacement of damaged curb along Roethel Drive during the water main replacement project in the amount of \$186,315.56.

Roethel Drive Water Main Replacement

Location Map



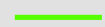
Map Author: Rebecca Runkel
Date: 9-13-23
Project: WM Replacement
Version #: 1.0

MAP INTERPRETATION NOTICE

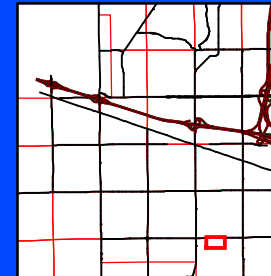
Map information depicted is not intended to replace or substitute for any official or primary source. This map was intended to meet National Map Accuracy Standards and use the most recent, accurate sources available to the people of the City of Novi. Boundary measurements and area calculations are approximate and should not be construed as survey measurements performed by a licensed Michigan Surveyor as defined in Michigan Public Act 132 of 1970 as amended. Please contact the City GIS Manager to confirm source and accuracy information related to this map.

Legend

Water Main
Online


 12"

 Project Area



City of Novi

Engineering Division
Department of Public Works
26300 Lee BeGole Drive
Novi, MI 48375
cityofnovi.org


Feet
1 inch = 197 feet



