



# CITY of NOVI CITY COUNCIL

**Agenda Item 10**  
**July 8, 2019**

**SUBJECT:** Approval to Purchase a 2019 PL Custom Classic 170 Type I Ambulance on a F-450 chassis purchased from PL Custom Inc. through the Sourcwell contract #022118-PLC in the amount of \$253,961.

**SUBMITTING DEPARTMENT:** Public Safety- Fire Department *DEM*  
Department of Public Work- Fleet Division

**CITY MANAGER APPROVAL:** *[Signature]*

<b>EXPENDITURE REQUIRED</b>	<b>\$253,961</b>
<b>AMOUNT BUDGETED</b>	<b>\$277,100</b>
<b>APPROPRIATION REQUIRED</b>	<b>N/A</b>
<b>LINE ITEM NUMBER</b>	<b>101-337.00-979.002</b>

## **BACKGROUND INFORMATION:**

As part of the 2019-2020 budget, funds were approved to replace our rescue SUV with a squad in its place. The current 2011 Ford Expedition Rescue #335 has met its eight year reliable life as a front line rescue unit. The new 2019 squad would assist and supplement the current contract with Superior Ambulance and also give the city a secondary transport capable squad which will be responding out of Fire Station #2.

The new rescue squad will better assist with keeping patients and team members safe on scenes of an emergency by providing the ability out to stay out the elements and also be used for a warming/cooling center for patients, fire victims and firefighters. The new squad 2 will mirror our current Squad 1 and will be equipped with a powered Stryker cot that matches with our Superior ambulances partners for easier patient transferring of care.

**RECOMMENDED ACTION:** Approval to Purchase a 2019 PL Custom Classic 170 Type I Ambulance on a F-450 chassis purchased from PL Custom Inc. through the Sourcwell contract #022118-PLC in the amount of \$253,961.

# MEMORANDUM



**TO:** DAVID E. MOLLOY, DIRECTOR OF PUBLIC SAFETY  
JEFFERY R. JOHNSON, DIRECTOR OF EMS / FIRE OPERATIONS

**FROM:** MARK THEISEN, CAPTAIN *MT*

**SUBJECT:** PL CUSTOM – SQUAD 2

**DATE:** JUNE 7, 2019

---

## Overview

The 2019-20 Budget included the replacement of a 2011 Ford Expedition from the fleet replacement program with a rescue Squad 2. The life expectancy for a front line response vehicle is about eight years. This is due to the amount of wear and tear, engine run hours, and updated safety standards that a front line vehicle is evaluated on. Rescue 2 is currently a two person sports utility vehicle (SUV) with the entire rear of the vehicle for storage of fire gear and rescue equipment. The new Squad 2 offers more storage and the ability to transport a patient if necessary to the hospital.

## Replacement Squad

PL Custom was chosen over other vendors due to quality of workmanship and the amount of customization offered. This will also mirror and have the same features as the new 2018 Squad 1 that was purchased in the 2018/19 budget. PL Custom is represented by Halt Fire, a local company in Wixom.

The price for the new Squad is \$253,961 and will be purchased utilizing the Sourcewell cooperative purchasing contract. Included in this purchase price is a fully powered Stryker cot. This is the same unit used by our partners at Superior Ambulance. If necessary, a patient can be loaded on our cot and transferred to a Superior Ambulance with the ease. This powered cot will also be able to lift a patient over 400 pounds with a push of one button.

This new Squad will have a reliable diesel motor, several exterior compartments, and the load capacity to fit all of our current and future equipment needs without being overloaded. It will also be equipped with 4 x 4 to insure we can respond in inclement Michigan weather.

Please let me know if you have additional question or comments.



2018 Novi Fire Department - Squad 1

# City of Novi Fire Department Ambulance Proposal



Captain Mark Theisen  
City of Novi Fire Department  
42974 Grand River Ave.  
Novi, MI. 48375

June 7, 2019

P.L. Custom Body and Equipment Co., Inc. and Halt Fire, Inc. are pleased to provide this proposal for your department to consider.

As you have requested, we are offering the following ambulance as described in the provided specifications and drawings: **One (1) PL Custom Classic 170 Type I** Ambulance on a 2019 Ford F-450 chassis. Pricing of the unit is **\$253,961.00**. Price is based on our current cooperative purchasing contract with Sourcewell (formally NJPA), contract #022118, model #NJPA10. This price does included the current Ford Fleet discount.

***Payment is due upon final inspection at PL Custom unless other terms are agreed upon at the time of order. Proposal price valid for 30 days.***

Current build time for PL Custom Emergency Vehicles is 265 days from receipt of signed proposal/contract.

Pricing for this unit includes the following, in addition to the provided proposal text:

- Stryker Power Pro Cot.
- Stryker Performance Load Cot Mounting system, installed by Halt Fire, Inc.
- Stryker Stair Chair
- Radio and intercom installation allowance for vendor of your choice.
- Graphics allowance for vendor of your choice.
- Delivery to Michigan.
- Equipment and tool mounting to match current unit by Halt Fire, Inc.

Thank you for the opportunity to provide you this proposal for your consideration! If you should have any questions please contact me at any time, I will be more than happy to clarify or review this proposal with you.

A handwritten signature in black ink, appearing to read "Tom McDonald", is written over a white background.

Tom McDonald  
Sales Representative  
Halt Fire, Inc.  
PL Custom Emergency Vehicles

Quote SO

Halt Fire, Inc.

City of Novi Fire Department  
 Mark Theisen  
 42975 Grand River Ave.  
 Novi, MI 48375  
 248-735-5696  
 mtheisen@cityofnovi.org

Halt Fire, Inc.  
 Tom McDonald  
 50168 W. Pontiac Trail, Unit 5  
 Wixom, MI 48393  
 (248) 240-6046  
 tmcdonald@haltfire.net

**Exp. Date:** 07/07/2019  
**Quote No:** A4844-0002  
**BODY:** CLSC170 Type 1 Classic, 170" 108"CA

06/06/2019

Page 1

PART NO	S	DESCRIPTION	QTY	ID
		<b>== Type 1 Classic, 170" 108"CA - 33.810 05/08/18 ==</b>	<b>1</b>	<b>PLG</b>
00-00-0100		PL Ambulance - Release 33.83, effective 1/1/19	1	PLG
00-11-7065	<	170" CLASSIC BODY, 72" Headroom, w/Drop Skirt	1	PLG
		Overall Vehicle Dimensions:		
		Length: 308"		
		Width: 99"		
		Height: 112" (+/- 2")		
		Exterior Modular Body Dimensions:		
		Length: 170"		
		Width: 97"		
		Height: 91"		
		Interior Modular Body Dimensions:		
		Length: 165"		
		Width: 90 3/4"		
		Height: 72"		
		<b>EXTERIOR</b>	<b>1</b>	<b>PLG</b>
10-10-1100		Modular Body Construction	1	PLG
10-10-2000	<	Structural Integrity Warranty	1	PLG
		The structural integrity of the body shall be guaranteed for the life of the unit, as long as the original purchaser shall own it.		
10-10-2070		Finite Element Analysis	1	PLG
10-10-2100		Compartments, Aluminum Diamond Plate, welded	1	PLG
10-15-4000		Body mounting, Type I, rubber donuts, L-Duty	1	PLG
10-20-3300		Lowered Body Skirts, with Intermediate Step	1	PLG
		<b>EXTERIOR DOORS, AMBULANCE</b>	<b>1</b>	<b>PLG</b>
<b>11-10-1060</b>		<b>Trimark 1875 Paddle Handle Power Locking, Entrance. Doors Qty(3)</b>	<b>1</b>	<b>PLG</b>
<b>11-10-4060</b>	<	<b>Trimark 1875 Paddle Handle Power Locking, Std Compt Doors (6)</b>	<b>1</b>	<b>PLG</b>
		Tied to OEM Power Door Lock Switch		
11-20-1800	>	Gas Spring Pneumatic Door Checks -Classic & Titan	1	PLG
11-20-2020		Comp. "A" Door to Check Past 90 Degrees	1	PLG
11-20-2030		Comp. "C" Door to Check Past 90 Degrees	1	PLG
11-20-2050		Comp. "E" Door to Check Past 90 Degrees	1	PLG
11-20-3000		Comp. "D" Door to Check Past 90 Degrees	1	PLG
11-20-5000		Cast Products Grabber Rear Doors Hold Open, Polished Aluminum	1	PLG
	<	<b>COMPARTMENT LAYOUT</b>	<b>1</b>	<b>PLG</b>
		Exterior compartment dimensions reflect wall to wall measurements.		
<b>12-10-3035</b>		<b>"A" Left Front (Extra Width) -23w x 86h x 21d -(w/Oxygen Window)</b>	<b>1</b>	<b>PLG</b>
<b>12-15-100E</b>		<b>"B" Left Side, 1/2 High -40w x 42h x 20d (use w/23" "A")</b>	<b>1</b>	<b>PLG</b>

PART NO	S	DESCRIPTION	QTY	ID
12-20-1420		"C" Left Rear, 3/4 High, outside access -26w x 59h x 20d	1	PLG
12-25-100A		"D" Right Front, In-Out Access -20w x 55h x 33d above floor -20d below floor	1	PLG
12-30-120A		"E" Right Rear -24w x 83h x 21d	1	PLG
		<b>COMPARTMENT DOOR PANELS, MATS, DECKING</b>	1	PLG
13-20-1000		Compartment Door Panels, Alum, Diamond Plate	1	PLG
13-30-1P00	<	Polycoated Compt & Entrance Door Sills, Area Behind Rub Rails Color: _____	1	PLG
13-30-2000		Vent Compartments to Exterior of Vehicle	1	PLG
13-40-1000		Dri-Dek, Floors of Compartment, Black	1	PLG
13-40-2500		Rubber Mat, Shelves, Exterior Compartment	1	PLG
13-40-2800		Turtle Tile Non-skid Stepwell Mat (removable)	1	PLG
		<b>COMPARTMENT CONFIGURATIONS AND EQUIPMENT</b>	1	PLG
13-41-0100		Oxygen Bracket located in Compartment A	1	PLG
13-42-0300		(2) Adjustable Shelves, for compartment "B"	1	PLG
13-43-0250		(1) Adjustable Shelf, for compartment "C"	1	PLG
13-47-0800	>	Custom Configuration - Compartment "E"	1	PLG
13-70-1330	< >	Securing Strap for BACKBOARDS -Nylon with metal buckle -(I/L/O Bulbous Mnts) Provide - which Compartment (Letter), where the Backboards are to be secured. Compartment: A LEFT WALL FOR BACKBOARDS	1	PLG
13-70-1400		DELETE Hanger For Ferno EXL or #65 Scoop	1	PLG
13-70-V080	X	Full width E compartment Shelf	2	
		<b>REAR STEP BUMPER</b>	1	PLG
14-10-2700		Lift-up Rear Step, Recessed, -Lic. plate left body	1	PLG
14-20-1000		Rear Dock Bumpers, Bolted to Bumper Ends	1	PLG
		<b>ALUMINUM DIAMOND PLATE ACCESSORIES</b>	1	PLG
15-10-1000		Front Stone Guards, Polished Diamond Plate	1	PLG
15-20-1050	<	Rub-Rails, C-Channel, offset , Bright-Finish (See Green + for Lights or Striping options)	1	PLG
15-30-2000		Running Boards, Flare type, Non-Slip Diamond Plate (F450 2-Door)	1	PLG
15-52-0100		Rear Diamond Plate Panel & Corner Guards	1	PLG
		<b>EXTERIOR TRIM</b>	1	PLG
16-10-1000		Fenderettes, Rolled, Polished Stainless Steel	1	PLG
16-30-1500		License Plate Holder w/LED Lt,Cast Prod Polish, Lt Side Body	1	PLG
16-35-1010		Fuel Fill Housing, Cast products, Polished (F-Series)	1	PLG
16-36-1010		DEF Fill Housing, Cast products, Polished (F-Series)	1	PLG
		<b>EXTERIOR, MISCELLANEOUS</b>	1	PLG
17-50-1000		Undercoat Body - AudioGuard	1	PLG
		<b>BODY WINDOWS</b>	1	PLG
18-10-1000	<	Window, Side Door (18"W x 22"H), Sliding, 31% Tint Transportation Products Inc. Window.	1	PLG
18-20-2000	<	Windows, Rear Doors, (15"W x 22"H), Fixed 31% tint Transportation Products Inc. Windows.	1	PLG
18-30-0800		-NO- Right Body Side Window -	1	PLG
		<b>INTERIOR CONSTRUCTION</b>	1	PLG
20-00-1000		Interior Construction Type - Standard Cabinets	1	PLG
		<b>INSULATION</b>	1	PLG
20-10-1200		Super Insulation Package, additional Radiant Barrier to Interior Body	1	PLG
20-10-2000		Sound Deadened Insulation, Entrance Doors	1	PLG
20-10-3000		Sound Deadened, Compartment Doors	1	PLG
20-10-5000		Sub-Floor, Expanded PVC Polymer	1	PLG
		<b>FRONT BULKHEAD</b>	1	PLG
21-10-0500		Type I, NO Walk-Thru, Sliding window cab to body	1	PLG
21-30-1000		Climate Control Unit Over Cab to Body Passage	1	PLG

PART NO	S	DESCRIPTION	QTY	ID
21-40-1500	<	Electrical Power Distribution Cabinet, Access Panels, vinyl covered Vinyl wrapped cover with an access panel with flush locking trigger latches	1	PLG
<b>RIGHT FRONT CABINET</b>			<b>1</b>	<b>PLG</b>
21-45-1000		Right front, upper storage w/Life Defender sliding doors, 1 shelf	1	PLG
21-50-1000		Right front Lower, inside/outside storage	1	PLG
21-50-2000	<	Right front Lower, (2) adjustable shelves Shelves to be lined with ribbed rubber mat.	1	PLG
21-60-1000		Right front cabinet Lower, 1/2" acrylic doors	1	PLG
<b>RIGHT SIDE BENCH LAYOUT</b>			<b>1</b>	<b>PLG</b>
22-00-1000		Squad Bench, Right side	1	PLG
22-20-0100		Backrest, Fixed, Standard Rectangular	1	PLG
<b>22-24-0760</b>	< >	<b>"A" Bar Armrest, Head of Squad Bench, w-storage below-(used w-45 Grab Rail)</b> <b>Note: **Engineering reference A00XXXXXX squad design to fit 521 Brackets below.</b> <b>***To be mounted to clear 45 degree grab rail on side door</b> <b>**Use 45 Grab Rail N005246-25 with this option</b> <b>Includes Sharps, Kendall 5qt #8507SA and a 8qt Rubbermaid trash container</b>	<b>1</b>	<b>PLG</b>
<b>22-24-0850</b>		<b>***** (Engineering will provide a custom stepwell for use with "A" Bar)</b>	<b>1</b>	<b>PLG</b>
<b>22-25-4130</b>	<	<b>Auxiliary Switch Panel, at Squad Bench above backrest</b> Auxiliary location for dual switching of (6) momentary switch functions. Includes: Rectangular Lights, Left Dome, Right Dome, Door Lock/Unlock, Heat / AC Fan Speed and Oxygen Solenoid -(if selected) Note: Patient Procedure lights (if selected), will be tied to the Rectangular Light Switch Switches to be mounted horizontally above backrest in laminate covered switch pod.	<b>1</b>	<b>PLG</b>
<b>22-25-4600</b>	< >	<b>Recessed "D" bottles, head of Squad Bench, at stepwell</b> See "D" bottle storage in section # 80-43-XXXX	<b>1</b>	<b>PLG</b>
22-30-2000		Squad bench lid, Positive hold down device	1	PLG
<b>22-45-0500</b>	< >	<b>O'head storage cabinet 7"h, Life Defender sliding doors-(KKK Compliant)</b> For KKK Rev. F, Compliant Clearance Applies to 72" headroom vehicles only. Lift-up restocking not available. Glove box storage not available. Shelf not available. Includes Austin Life Defender Sliding Doors.	<b>1</b>	<b>PLG</b>
<b>LEFT SIDE MIDDLE (Base Cabinet)</b>			<b>1</b>	<b>PLG</b>
23-10-1000		Left side attendant seat-(CPR Seat)	1	PLG
23-10-3000	>	Backrest cushion, fixed	1	PLG
<b>23-10-4500</b>		<b>Seat cushion, lift-up, w/ latch, interior storage-Single CPR</b>	<b>1</b>	<b>PLG</b>
<b>LIFE SUPPORT STATION</b>			<b>1</b>	<b>PLG</b>
23-30-2000		Switch pod, above counter, vinyl covered	1	PLG
23-30-2010		Rear Main Switch Panel Located in LSS Switch Pod	1	PLG
23-30-2250		**No Radio Cut-Outs to be provided in LSS**	1	PLG
23-31-1500		Cabinet head of switch pod, hinged door, 1 shelf	1	PLG
23-32-0950	< >	(Reduced Hgt) Upper cabinet, 45 deg, w/Life Defender sliding doors, 1 shelf The Interior Height of this cabinet will approximately be 13 -1/4" High Includes Austin Life Defender Sliding Doors.	1	PLG
<b>23-34-1500</b>	< >	<b>Solid Surface counter, 1" lip, Left front, Color: Steel Gray Tempest 9194TM</b> <b>Meganite "Silver Mist" has been discontinued by the manufacturer and has been replaced with solid surface "Steel Gray Tempest".</b>	<b>1</b>	<b>PLG</b>
<b>LEFT REAR STORAGE CABINET</b>			<b>1</b>	<b>PLG</b>
23-40-1050	<	Left rear full cabinet, upper, 45 deg w/Life Defender sliding doors 45 deg hinged door to be a White Acrylic overlapping door to act as a dry-erase,	1	PLG

PART NO	S	DESCRIPTION	QTY	ID
		writing surface.		
		Includes (1) adjustable shelf, installed in the sliding door portion of the cabinet and adjustable shelf, installed in the 45 degree portion	(1)	
		Includes Austin Life Defender Sliding Doors.		
<b>23-42-1500</b>	>	<b>Solid Surface counter, 1" lip, Left rear, Color: Steel Gray Tempest 9194TM</b>	<b>1</b>	<b>PLG</b>
<b>23-44-2010</b>	< >	<b>Trash/Sharps Combo, tip out, below left rear counter</b>	<b>1</b>	<b>PLG</b>
		Sharps Container 1qt.		
		Not available w/pull-out drawer option #12-35-10		
<b>INTERIOR CABINET DOORS</b>			<b>1</b>	<b>PLG</b>
<b>24-10-4M00</b>		<b>All Cabinet doors, Lexan/Acrylic, Clear</b>	<b>1</b>	<b>PLG</b>
24-15-1000		Handles, full length, sliding doors	1	PLG
24-20-1000		Positive closure devices hinged doors	1	PLG
24-25-1000		Unistrut, interior cabinet shelves, "Mini"	1	PLG
<b>ENTRANCE DOORS</b>			<b>1</b>	<b>PLG</b>
<b>24-30-2000</b>		<b>Ent. Door panels, 3 section</b>	<b>1</b>	<b>PLG</b>
<b>ABOVE DOOR HEAD BUMPERS</b>			<b>1</b>	<b>PLG</b>
24-35-0100		Side Door Head Bumper	1	PLG
24-35-0500		Rear Door Head Bumper	1	PLG
<b>GRAB RAILS</b>			<b>1</b>	<b>PLG</b>
25-10-1000		Grab rail, 72", s/steel, over squad bench	1	PLG
25-10-1500		Grab rail, 72", s/steel, over cot	1	PLG
25-10-3600		Grab rail, 18", at rear entrance doors, (2)	1	PLG
25-11-1A00		Grab rail, 45 deg, side entrance door, (1)	1	PLG
25-12-2000		Grab handle, spring loaded, rear ent door (2)	1	PLG
<b>SEAT BELTS</b>			<b>1</b>	<b>PLG</b>
25-50-2000		Seat belt, attendant seat, Qty (1)	1	PLG
25-51-1000	>	Patient restraint strap, squad bench, Qty (3)	1	PLG
25-51-2020	<	(2) Six point Seat Belt Harnesses - Curbside Seating (Full Bench w/ Patnt Restr)	1	PLG
		Qty: (2)		
		Loc: (2) Curbside Seating		
25-51-2030	<	(1) Six point Seat Belt Harness - Street Side Seat	1	PLG
		Qty: (1)		
		Loc: Streetside Seating		
<b>COT MOUNT and COT MODEL</b>			<b>1</b>	<b>PLG</b>
<b>26-33-1000</b>	< >	<b>Performance-LOAD - Floor Plate assembly Kit ONLY (SAE Compliant)</b>	<b>1</b>	<b>PLG</b>
		For future install of Performance Load System		
		Mass casualty floor plate for mini rail clamp provisions shall be provided		
<b>I.V. HOLDER</b>			<b>1</b>	<b>PLG</b>
26-50-1M10		Rubber I.V. holder, dual, recessed, over cot	1	PLG
26-50-2100		Rubber I.V. holder, dual, recessed, over squad bench	1	PLG
<b>INTERIOR COLORS</b>			<b>1</b>	<b>PLG</b>
27-10-1000		Ceiling, white Thermoplastic	1	PLG
27-10-1510		Upper Laminate - High Gloss Fashion Grey D381-01	1	PLG
27-10-4210		Lower Laminate - High Gloss Fashion Grey D381-01	1	PLG
<b>INTERIOR UPHOLSTERY</b>			<b>1</b>	<b>PLG</b>
27-20-5000		Upholstery, Flat-Seamless	1	PLG
27-20-5600		Upholstery Color: Gray	1	PLG
<b>ATTENDANT SEAT</b>			<b>1</b>	<b>PLG</b>
27-36-1000	>	Gray, Attendant Seat, EVS 17703, 3 Point Harness, ABS Back, Swivel, Sewn Vinyl	1	PLG
27-37-0100		** Confirm Seat color** - GRAY is the vehicle upholstery color	1	PLG
<b>FLOORING</b>			<b>1</b>	<b>PLG</b>
<b>27-53-2200</b>		<b>Lonplate II, diamond plate, Gunpowder (#424TX)</b>	<b>1</b>	<b>PLG</b>
27-55-2000		Flooring rolled up side walls 3"	1	PLG



PART NO	S	DESCRIPTION	QTY	ID
<b>CAB CONSOLE</b>				
27-72-1010	<	Type I, Floor Mnt, switches, siren/radio - (2017+ F-Series) NOTE: (2) Cup holders are NOT included in the console. The cupholders are part of the map-box (See PDF)	1	PLG
27-75-0100		**No Radio Cut-Outs to be provided in Cab Console**	1	PLG
27-75-2050	< >	Map Box, Type I, Behind Cab Console, (2) pockets - (2017+ F-Series) includes (1) lexan divider  See PDF	1	PLG
<b>27-75-S001</b>	<b>X &lt;</b>	<b>Console lid cutout order</b> <b>From front to back</b> <b>1. Space for radio</b> <b>2. Whelen Siren</b> <b>3. EQ2B</b> <b>4. Traffic advisor</b>	<b>1</b>	
<b>MISCELLANEOUS INTERIOR</b>				
<b>28-45-1320</b>	<b>&lt; &gt;</b>	<b>Glove box holder for (3) Boxes, recessed -over Side ent. Door</b> Storage for (3) glove boxes over side entrance door with a hinged, lexan door and front facing access holes. NOTE: Width of right front upper cabinet must be decreased by approx. 3", and the O'head cabinet (above squad bench) will be decreased by approx. 3" also. Fits either: (3) *Large Boxes @ 9-5/8" x 5" x 3-1/8" ea. or (3) *Small Boxes @ 9-1/2" x 4-3/4" x 2-3/4" ea.	<b>1</b>	<b>PLG</b>
28-50-1000		Fasten Seat Belt/No Smoking Sign	1	PLG
<b>OXYGEN AND SUCTION</b>				
30-10-1000		Oxygen Outlet, Amico, dual, LSS Sw Pod	1	PLG
<b>30-10-2000</b>		<b>Oxy Outlet, Amico, single, rt side- In O'head Cabinet</b>	<b>1</b>	<b>PLG</b>
30-20-1000		Oxygen Solenoid, Amico, w/ manual override & switch	1	PLG
30-30-1000		Suction pump, electric, Thomas, switch in Rear Main Switch Panel	1	PLG
30-30-2400		Collection Bottle, SSCOR Disp.w/ canister clip, White Regulator (KKK Compliant)	1	PLG
<b>30-50-3500</b>	<b>&gt;</b>	<b>Oxygen Bottle holder, Zico QR-MV, Multiversal</b>	<b>1</b>	<b>PLG</b>
<b>30-50-3850</b>	<b>&lt;</b>	<b>***Attention: Please Specify Tank Letter Size used within this shop note</b> <b>Oxygen Tank Size is: H</b>  <b>(example; M tank steel, M tank aluminum, H tank steel)</b>  <b>This will allow the factory to preset the mounts for your customer.</b>	<b>1</b>	<b>PLG</b>
30-60-4000		Regulator, Oxygen, Large Tank, (PLC-9662)	1	PLG
<b>30-80-1000</b>		<b>Wrench, Oxygen Cylinder - (wall mounted)</b>	<b>1</b>	<b>PLG</b>
<b>30-90-S001</b>	<b>X</b>	<b>CENTER OF O2 BRACKET TO BE LOCATED 14" OFF OF REARWARD WALL OF COMPT</b>	<b>1</b>	
<b>ELECTRICAL</b>				
40-00-0500	<	Electrical System Warranty The Electrical System shall be warranted for the life of the unit, as long as the original purchaser shall own it.	1	PLG
40-00-1200		Electrical 12 VDC, Classic-Series	1	PLG
40-00-1900		Electrical 12 VDC Specifications	1	PLG
<b>CAB ELECTRICAL</b>				
41-10-0100		Alternator, Dual with 355 amp combined output, OEM Ford F-Series	1	PLG
41-20-0800		Batteries, Dual Ford OEM, 1500CCA -(under hood)	1	PLG
41-30-3750		K3 -Ignition Switched, Module Disconnect	1	PLG
41-50-1000		Cab Under hood & Fender Electrical Connectors - Deutsch Type	1	PLG
<b>SWITCH PANEL</b>				
			<b>1</b>	<b>PLG</b>

PART NO	S	DESCRIPTION	QTY	ID
42-10-1000		Voltmeter, Analog, 8 to 18 volt, lighted	1	PLG
42-10-2400		Low Voltage Alarm & Indicator	1	PLG
42-15-2500	>	Rocker Switches, Carling Contura V	1	PLG
42-20-0500		Battery On indicator light	1	PLG
42-20-1000		Warning Indicator, Door open, Red	1	PLG
42-20-2000		Warning Indicator, Compt open, Amber	1	PLG
42-20-3000		Warning Indicator, Audible alarm, Door/Compt	1	PLG
42-20-4200		Warning Ind/Audible, Parking Brake, Dual-Mode Alarm	1	PLG
<b>42-21-1000</b>		<b>Hella Gooseneck Light 7", Includes Red Filter</b>	<b>1</b>	<b>PLG</b>
42-25-6000		Throttle, Electronic Ford OEM (Diesel Engine Only)	1	PLG
42-30-1000		Back-up alarm, w/resetting cancel switch	1	PLG
<b>42-35-2500</b>	<	<b>Work Light, Overhead (Cab) Sound Off, LED, R/W w/Switch on light</b> With Red and Clear LED Bulbs, Switch on light. Located near the Center in the overhead in the Cab	<b>1</b>	<b>PLG</b>
42-45-2200	< >	Load Manager/Sequencer, PL Custom/Kussmaul (full time) RESPONSE AND SCENE AMPS CANNOT EXCEED 230 AMP  FULL TIME Load Management of Emergency Lights	1	PLG
<b>42-50-1100</b>	<	<b>Front Console Switch Panel Backlighting Dimmer</b> Rheostat installed in front switch panel	<b>1</b>	<b>PLG</b>
<b>42-60-2400</b>		<b>Air Horn, (2) Buell 1062, bumper valance mount , 1/4 hp compressor</b>	<b>1</b>	<b>PLG</b>
<b>42-60-5000</b>	<	<b>Air Horn activation, Carling Momentary in Front Switch Panel</b> Switch will have white rocker for easy identification.	<b>1</b>	<b>PLG</b>
42-65-1300		Pwr Lock Switch, Entrance, OEM Door switch- (if applicable)	1	PLG
<b>42-65-1500</b>	< >	<b>Remote Keyless Entry w/Chassis Power Door Lock Control</b> OEM door switches control cab & body doors.	<b>1</b>	<b>PLG</b>
<b>42-65-2010</b>		<b>Power Door Lock Switch, Side Entrance Door</b>	<b>1</b>	<b>PLG</b>
<b>42-65-2020</b>		<b>Power Door Lock Switch, Rear Entrance Doors</b>	<b>1</b>	<b>PLG</b>
<b>42-65-2200</b>	< >	<b>Pwr Door Lock Concealed Override Switch, Grille -(KKK)</b> Located in front grille area. This switch location is KKK compliant	<b>1</b>	<b>PLG</b>
<b>42-78-S001</b>	S <	<b>White Warning Light Cutoff Switch</b> There shall be a cutoff switch for forward facing white emergency lights. To be on/off, not momentary.  The white cut off switch circuit shall function as follows. When the switch is in the ON position, the lights will be able to be activated by the flashing switch (F4) and the front LED switch (F2 and (F6 white halves). When switch is in the OFF position the lights will not be able to be activated.	<b>1</b>	<b>PLG</b>
<b>42-78-S002</b>	S	<b>Rear Module interior light cut-off. Momentary cutoff switch.</b>	<b>1</b>	<b>PLG</b>
<b>42-90-S017</b>	X	<b>DELETE Unity Hand Held Spotlight</b>	<b>1</b>	
		<b>EMERGENCY WARNING EQUIPMENT</b>	<b>1</b>	<b>PLG</b>
		<b>TRAFFIC PRE-EMPTION SYSTEM INSTALLATION</b>	<b>1</b>	<b>PLG</b>
<b>43-01-1000</b>	<	<b>Install Customer Supplied 3M Opticom, surface mount</b> Provide circuitry and install customer supplied equipment. Location: Front of body  792-H opticom  The Opticom is to be tied into the sequencer and NOT the load manager. It will have its own switch in the front console and is to deactivate when not in a drive gear.  The Opticom will be surface mounted, not recessed.	<b>1</b>	<b>PLG</b>

PART NO	S	DESCRIPTION	QTY	ID
43-01-V010	X <	<b>Opticom Mounted in 798 Bezel Mount Kit (Mount Only Select Opticom Separately)</b> PL Cutom to supply bezel mount kit. To be used with model 792, 794, & 492 Emitter	1	
<b>SIREN</b>			1	PLG
43-20-4G50	>	Siren, Whelen 295SLSA1, w/diag.	1	PLG
43-20-S001	X	<b>Horn-Airhorn Switch</b>	1	
43-2U-4800	<	<b>Siren Federal E-Q2B Siren, Remote (ILOS)</b> 200 watt w/surface mount control head	1	PLG
<b>SIREN SPEAKERS</b>			1	PLG
43-30-V033	X <	<b>Federal Signal BP200 and ES100C Speakers, Custom Siren Configuratio</b> A Federal Signal ES100C & BP200 speaker will be installed in the front bumper w/ "Electric F" covers ilo standard speakers. The ES100C will be connected to the Whelen 295SLSA1 siren. The BP200 will be connected to the Federal Signal E-Q2B.  Use of this line requires the following lines: 43-2U-4800 - Federal Signal E-Q2B 43-20-4G50 - Whelen 295SLSA1 Siren	1	
<b>FRONT LIGHT BAR</b>			1	PLG
43-40-0500		-No front Lightbar required-	1	PLG
<b>REAR LIGHT BAR</b>			1	PLG
43-50-1000		-No rear Lightbar required-	1	PLG
<b>REAR TRAFFIC ADVISOR</b>			1	PLG
43-50-8000	< >	<b>Whelen Traffic Advisor, Low Profile TAL85 (8) LED (46")</b> Rear Body Lights to be 700 Series w/No Rear Light Bar	1	PLG
43-50-8100	<	<b>Remote activation of Traffic Advisor in "Flash" mode (Whelen only)</b> The traffic advisor will activate in "flash" mode when the Flashing Warning lights are active and the traffic advisor control head is turned off. Turning the traffic advisor control head on will override this function.	1	PLG
<b>CAB MOUNTED LIGHTS</b>			1	PLG
43-71-0600	>	(2) Center Whelen 7x3 LED-Grille Light -(2) Red	1	PLG
43-71-1623	<	<b>*** No Grille Flange Required (Only Whelen ION Wide Angle LED-Grille Light)</b> No Cast Grille Flange shall be provided for the grille lights.  Applies to lights such as Whelen WION which are small enough to fit on the grille.	1	PLG
43-71-3900		(2) Whelen 500 Super-LED, Red -Fender	1	PLG
43-71-7520		Fender Cast Flanges, Cast Products, 500/TIR6 Lights (F-2017+ Chassis)	1	PLG
43-72-0000		* Please Verify Correct Grille/Fender Light Housing For Appropriate Light Size *	1	PLG
<b>BODY LIGHTING -(Full Catalog PDF here)&gt;</b>			1	PLG
<b>FRONT BODY VEHICLE LIGHTS -(Non-Emergency)</b>			1	PLG
43-A1-0700		(2) 600-Whelen, Directionals -LED,Amb/Arrow, Front -(Loc:F1C&F7C)-Clear	1	PLG
43-A2-0050		* FRONT BODY LIGHTING -w/NO LIGHTBAR (PDF>)	1	PLG
43-A2-0250	<	<b>** (7) Front Upper Lights &amp; Directionals</b> The (4) lights, outboard of the Center light position, shall operate from (1) console switch.	1	PLG
43-A2-0265	< >	<b>** (7) Front Upper Lights &amp; Directionals -"Staggered" -See PDF &gt;&gt;&gt;</b> The (4) lights, outboard of the Center light position, shall operate from (1) console switch.	1	PLG
43-A5-0030	< >	<b>Independent - Flash - No Vehicle Flasher</b> All lightheads are flashed randomly using internal flashing program, without light to light synchronization.	1	PLG

PART NO	S	DESCRIPTION	QTY	ID
43-A5-0060	<	<b>Program Flashing Lights to "Action Scan"</b> Whelen flash pattern Lighthouse will scroll through all available patterns and repeat	1	PLG
	>	<b>FRONT BODY WARNING LIGHTS</b>	1	PLG
43-B0-0100		9x7, 900 Sup-LED, Red, Front - (Loc: F1)	1	PLG
43-B0-1050		9x7, 900 Split Sup-LED, Red/White, Front - (Loc: F2)	1	PLG
43-B0-1250		9x7, 900 Sup-LED, Red, Front - (Loc: F3)	1	PLG
43-B0-1500		9x7, 900 Sup-LED, White Front -(Loc: F4)	1	PLG
43-B0-2600		9x7, 900 Sup-LED, Red, Front - (Loc: F5)	1	PLG
43-B0-3000		9x7, 900 Split Sup-LED, Red/White, Front - (Loc: F6)	1	PLG
43-B0-3200		9x7, 900 Sup-LED, Red, Front - (Loc: F7)	1	PLG
		<b>Whelen Primary Side Light package (PDF&gt;)</b>	1	PLG
43-F0-0100		9x7, 900 Sup-LED, Red, Left Side - (Loc: LS1)	1	PLG
43-F0-1100		9x7, 900 Sup-LED, Red, Left Side - (Loc: LS4)	1	PLG
43-F4-0100		9x7, 900 Sup-LED, Red, Right Side - (Loc: RS1)	1	PLG
43-F4-1100		9x7, 900 Sup-LED, Red, Right Side - (Loc: RS4)	1	PLG
		<b>REAR BODY WARNING (Flashing) LIGHTS</b>	1	PLG
43-H1-0100		**Whelen Independent, Rear Body Flashing Lights - CLEAR Lens	1	PLG
		<b>REAR LIGHT LAYOUT -(w/Traffic Advisor)-No Lightbar (PDF&gt;)</b>	1	PLG
43-L4-0120		(3) Rear Upper Lights & Traffic Advisor & (2) Window Level Lights	1	PLG
43-S0-0100		9x7, 900 Sup-LED, Red, Rear - (Loc: R1)	1	PLG
43-S0-1150		7x3 Sup-LED, Amber, Rear - (Loc: R4B)	1	PLG
43-S0-1850		9x7 Sup-LED, Red, Rear - (Loc: R7)	1	PLG
		<b>Rear Lights at Window Level</b>	1	PLG
43-S0-2400		9x7 Split Sup-LED, Red/Amber, Rear - (Loc: R10B)	1	PLG
43-S0-3150		9x7 Split Sup-LED, Red/Amber, Rear - (Loc: R11B)	1	PLG
		<b>SECONDARY (miscellaneous) BODY MOUNTED WARNING LIGHTS</b>	1	PLG
43-T5-1300	<	<b>Whelen 700 Series Red Super-LED, w/Flange, (2) Over Rear Wheel, CLEAR LENS</b> Color: Red (clear lens)	1	PLG
43-T5-3475	<	<b>Heavy Duty Lighting LED Lights (8) Red - In "C" Channel Rub-Rails</b> Lights will flash simultaneously, unless 43-T3-3590 has been added using Green+ Four on each side, Red, with black rubber bezel.  (2) Forward of wheel and (2) Rear of wheel	1	PLG
		<b>FLASHING LIGHTS; OTHER</b>	1	PLG
43-T6-1520	< >	<b>Safety Lts, (6),3 Per Door- OS Series LED, Amber, Rear Ent Doors, Full time acti</b> Lights are active anytime power is on and doors are open	1	PLG
43-T6-1530	< >	<b>Safety Lts, (3)- OS Series LED, Amber, Side Ent Door, Full time activation</b> Lights are active anytime power is on and doors are open	1	PLG
		<b>REAR NON-EMERGENCY LIGHTS</b>	1	PLG
44-10-1000	< >	Stop/Tail and Turn Signal -Light heads with color lenses Exterior vehicle Rear Stop/Tail & Turn light heads will have Color Lenses.	1	PLG
44-10-2500		Stop/Tail, (2) Whelen 600 Series LED-(color Lens) w/Flange	1	PLG
44-15-1M00		Back-up, (2) Whelen 600 Series, w/Flange	1	PLG
44-25-1800		Directional, (2) Whelen 600 LED -(color Lens) Amber Arrow	1	PLG
		<b>AUXILIARY NON-EMERGENCY LIGHTS</b>	1	PLG
44-30-1000	>	HD Mini Oval Marker/Clearance Lts, LED Front, Rear, (2) Sides	1	PLG
44-30-1500		<b>Add'l Marker/Clearance Lights LED, Forward Body Sides</b>	1	PLG
44-30-3000	>	Lower Side Marker, Flash w/Directionals, (2) ea side	1	PLG
		<b>FLOOD LIGHTS</b>	1	PLG
44-50-1040		(2) Whelen 9x7, 24-LED Opti -Scene Flood, Left side-(Loc:LS2, LS3)	1	PLG

PART NO	S	DESCRIPTION	QTY	ID
44-50-1140		<i>(2) Whelen 9x7, 24-LED Opti -Scene Flood, Right side-(Loc:RS2, RS3)</i>	1	PLG
		<b>REAR FLOOD LIGHTS</b>	1	PLG
44-52-0200		<i>(2) Whelen 7x3, LED- Scene Lights, Rear -(Loc: R12B,R13B)</i>	1	PLG
44-60-1000		Right Side Scene Lights on with Side Door & Switch in Console	1	PLG
44-60-2000		Left Side Scene Lights w/On-Off Switch Console	1	PLG
44-60-3000		Rear Scene Lights on w/Rear Door Open/Reverse	1	PLG
44-60-4000	<	Rear Scene Lights, On-Off Switch in Console	1	PLG
		Rear floods switch shall also activate reverse lights.		
44-60-5000		Right Side Scene Light Cancel Switch	1	PLG
44-60-6000		Rear Door Scene Light Cancel Switch	1	PLG
44-60-7000		Left/Right & Rear Flood Lights, On In Reverse	1	PLG
		<b>CLIMATE CONTROL</b>	1	PLG
45-10-1000		Ventilation, Flow-Thru, (2) Speed, Cast Products Rear Cowl	1	PLG
45-30-1Q00		Ducted Heater/Air Cond, Digital Thermostat -F-Series	1	PLG
45-35-1100		Auxiliary Coolant Pump Climate Control System	1	PLG
45-60-1000		<b>Switch in Cab On-Off Control, Heater-A/C Unit</b>	1	PLG
		<b>CEILING CONFIGURATION</b>	1	PLG
45-99-0100		Ceiling Configuration for 6 Dome Lights, 4 Rectangular Lights & 2 Speakers	1	PLG
		<b>INTERIOR LIGHTS</b>	1	PLG
46-10-1L00	< >	(6) Dome Lights, Whelen Multi -LED, Hi-Lo, Qty (#80C0EHCR) Whelen Product change 5/6/13 -from 9 LED to 18 LED (same overall Lumens)	1	PLG
46-10-2000		Dome Lights Switched to LOW Mode w/Door Open	1	PLG
		<b>EXTERIOR COMPARTMENT LIGHTS</b>	1	PLG
46-20-1075	<	Lights, Ext. Compartments, TecNiq LED E41 Strip Lights (Vertical Linear Lights)	1	PLG
46-20-1150		Whelen LED Strip-Lite, Right Front In-Out Compt	1	PLG
46-20-1350		Oxygen Compartment Light Switch, Located in Rear Main Switch Panel	1	PLG
		<b>AUXILIARY INTERIOR LIGHTING</b>	1	PLG
46-20-2000		Heavy Duty LED panel Light, (LSS Area)	1	PLG
46-20-2550		Panel Light (LSS Area) Switch, Located in Rear Main Switch Panel	1	PLG
46-30-1100		Stepwell Light, LED, Located at Side Entrance Door	1	PLG
46-40-1P00		TecNiq E30, 42 LED Rectangular Ceiling Lights Qty (4)	1	PLG
46-40-3M10	<	<b>Rectangular Lights "12 Volt Hot" 5-Minute Timer, Side Door</b> 5 minute windup timer at side door, active with master power off	1	PLG
46-50-1000		Dome Light Switch, (1) Left, (1) Right	1	PLG
		<b>MEDICAL OUTLETS</b>	1	PLG
47-20-1000		12 volt Medical Outlet, Power Point, Loc: LSS Wall	1	PLG
47-20-2000		12 volt Medical Outlet, Power Point, Loc: Right Front In/out	1	PLG
47-20-2500	< >	12 volt Medical Outlet, Power Point, Loc: Left Rear Outlet mounted 14" above the rear counter	1	PLG
47-50-1000		<b>Medical Isolator, Shottky, Low Voltage Drop</b>	1	PLG
47-50-1P20	<	<b>Outlet, Kussmaul 5VDC Dual USB, installed in Cab Switch Panel</b> For USB charging, Hot with body power or shoreline Qty: 1	1	PLG
47-50-1P30	<	<b>Outlet, Kussmaul 5VDC, Dual USB, installed in LSS Switch Panel</b> For USB charging, Hot with body power or shoreline Qty: 1	1	PLG
		<b>ANTENNA/COMMUNICATION RADIO</b>	1	PLG
47-60-0210	<	<b>(2) Antenna Leads w/ Base and Cap Installed - Body Roof - (See PDF)</b> Unless otherwise specified, lead will route to: (1) Front console (1) LSS  Factory will drill a hole, mount base and cap at antenna location(s) specified above	1	PLG

PART NO	S	DESCRIPTION	QTY	ID
		Antenna bases are installed with nominal height adjustment. Persons installing antenna whip may be required to perform final adjustment.		
<b>47-60-6200</b>	< >	<b>Radio Power Lead, Rear Main Switch Panel</b> Includes: (1) Red 10 gauge marked radio 12 volt Hot, 30 amp, (1) Black 10 gauge marked radio ground, (1) Orange 12 gauge marked 12 volt switched, 20 amp.	<b>2</b>	<b>PLG</b>
47-60-6500	< >	Radio Power Lead 30 Amp, 10 ga. Cab Console Includes: (1) 12 volt Hot wire with 30 amp circuit protection, (1) 12 volt switched wire with 20 amp circuit protection.	1	PLG
47-60-7000	< >	Radio Power Lead w/40 Amp Fuse, 8 ga. Behind driver seat Includes: (1) 12 volt Hot wire w/fuse holder & 40 amp fuse, (1) 12 volt switched wire w/fuse holder and 40 amp fuse.	1	PLG
		<b>MISCELLANEOUS 12 VOLT ELECTRICAL</b>	<b>1</b>	<b>PLG</b>
<b>48-15-1610</b>	<	<b>Back-Up 2-Camera System ASA Voyager w/7" Rear View Mirror Replacement Monitor ASA Voyager System</b>  Interior camera to be located on the rear head bumper.	<b>1</b>	<b>PLG</b>
48-20-2000	>	Speakers, Stereo Volume Control Rear Sw Panel	1	PLG
48-50-3070		Intellitec, Clock, mounted on 45 degree Cabinet (LSS)	1	PLG
<b>48-60-3700</b>		<b>Liquid Spring Control Left Rear Door Open w/ Override switch</b>	<b>1</b>	<b>PLG</b>
<b>48-80-V023</b>	X <	<b>12V Hot power lead, utility, body location</b> Location: (1) TO BOTTOM CENTER OF C COMPARTMENT, (1) TO BOTTOM CENTER OF E COMPARTMENT FOR CHARGING OF HAND LIGHTS AND THERMAL IMAGING CAMERA.	<b>2</b>	
		<b>ELECTRICAL 115 VOLT AC</b>	<b>1</b>	<b>PLG</b>
<b>51-20-5020</b>	< >	<b>Shoreline, Super Auto-Eject 20 amp, Left Side, Color other, Above Compt. "B"</b> Color of Cover: Red	<b>1</b>	<b>PLG</b>
51-30-1500	<	Shoreline/ Battery Charging Dual Indicator Lights Shoreline - Amber Indicator Battery Charger - Green Indicator	1	PLG
51-32-2000		Power Distr Box, 115v, w/20 amp Circuit Bkr	1	PLG
51-40-1000	< >	Engine Block Heater to Shoreline (If so equipped) Note: Includes block heater switch in Electrical cabinet. The heater should only be switched on during (cold weather) as per chassis owner manual guidelines.	1	PLG
51-40-3000		On-off Switch 115v, For Control of Block Htr	1	PLG
<b>52-10-1200</b>		<b>Hospital Grade Lighted Outlet, Location: L/S/S Wall</b>	<b>1</b>	<b>PLG</b>
52-10-2000	< >	Hospital Grade Lighted Outlet, Location: Left Rear Outlet mounted 14" above the rear counter	1	PLG
52-10-3000		Hospital Grade Lighted Outlet, Location: Right Front In/out	1	PLG
		<b>BATTERY CHARGER / INVERTER CHARGER</b>	<b>1</b>	<b>PLG</b>
<b>55-10-1200</b>	< >	<b>Inverter, Vanner 1050CUL-DC 1050 Watt, w/ 55 amp Battery Chr</b> Deletes Standard Battery Charger	<b>1</b>	<b>PLG</b>
		<b>PAINT LUSTRE</b>	<b>1</b>	<b>PLG</b>
60-00-0005		Ten Year Paint Warranty (Paint Lustre)	1	PLG
60-00-0007		Paint Adhesion Testing	1	PLG
		<b>BODY AND CAB PRIMARY PAINT</b>	<b>1</b>	<b>PLG</b>
<b>60-10-0240</b>		<b>*Body Two Color, Cab Single Color</b>	<b>1</b>	<b>PLG</b>

PART NO	S	DESCRIPTION	QTY	ID
60-10-2020		<i>Paint Lower Modular Body</i>	1	PLG
60-10-2245	<	<i>Lower Body Paint Color Red</i> Provide Paint Code FRD97:F1	1	PLG
60-10-6030		<b>**Paint Upper Modular Body , Color Other Than Unit Standard White,</b>	1	PLG
60-11-0100	<	<i>Upper Body Paint Color Black</i> Provide Paint Code FLNA 4145	1	PLG
60-12-3533	<	<i>Paint Break Location 12" Below Upper Body Cove</i> " Two tone is NOT to run on rear skin. To be solid red for future chevrons. Black will run around corners and roof cove. "	1	PLG
<b>ADDITIONAL VEHICLE PAINT, SECONDARY</b>			1	PLG
61-05-0008		<i>No Additional Paint Required</i>	1	PLG
61-80-2200	<	<i>Polycoated Compt &amp; Entrance Door Sills, Area Behind Rub Rails (**Factory Note**)</i> (Factory Note: 13-30-1P00 Polycoated Compt & Entrance Door Sills, Area behind Rub Rails has been selected)	1	PLG
65-50-4030	< >	<i>Reflective (Color) Tape Stripe 3/4" Outline, on interior of Entrance Doors</i> Reflective 3/4" Outline  <b>COLOR: RED</b>	1	PLG
<b>TECHNICAL RADIO INSTALLATION</b>			1	PLG
70-10-0500		No Technical Radio Installation	1	PLG
<b>CHASSIS EQUIPMENT</b>			1	PLG
75-10-1S00		Stainless Steel Wheel Inserts F- 08+, with -19" wheel	1	PLG
75-30-1000		<i>Liquid Spring Suspension System (F450)</i>	1	PLG
75-45-3550	>	<i>Reserve Air Tank 5 Gallon</i>	1	PLG
75-55-1200	<	Mirrors, Ford OEM F-Series Trailer Tow w/Power-Heated Glass Include Integrated clearance lights and turn signals.	1	PLG
75-60-1000		Mud Flaps, Rear, Light Duty Chassis	1	PLG
75-95-2500		Ford Series Front End-Caster Camber Align	1	PLG
<b>EQUIPMENT</b>			1	PLG
80-35-2K30	<	<i>Fire Extinguisher, ABC, 5lb, Qty:(2) w/Amerex #861 H Bracket (SAEJ3043 Comp)</i> Shipped loose. Includes #861H Amerex Mounts	1	PLG
80-43-4250	< >	<i>Bottle Brackets, Zico-Quick-Release, Strapless (2) , (D Bottle)</i> Model QR-D-2 Located in the recessed stepwell area Qty (2)	1	PLG
80-50-1000		Prep, Clean & Detail Vehicle for Delivery	1	PLG
<b>CHASSIS</b>			1	PLG
95-12-194L	<	<b>2019 FORD F450-Super Duty, 4x4, 108" CA, XLT Trim</b> Ford F450 Chassis Cab Four Wheel Drive Wheelbase 193" - 108" CA Dual Rear G.V.W. 16,500 lbs.  Powertrain/Functional: Engine: 6.7L "Powerstroke" Turbo Diesel V8 300 hp @2800 RPM, 660 lbs torque @1600 RPM Single Stage Turbo Charger Instant Start Glow Plugs for quick engine starts Diesel Emissions Fluid 6 gallon tank - mounted behind frame rail on drivers side Intelligent Oil Life Monitor Engine block heater	1	PLG

PART NO	S	DESCRIPTION	QTY	ID
		Water Pump with 125 gallons per minute flow rate		
		Transmission: Heavy Duty "TorqShift" Six Speed Select Shift Automatic with overdrive		
		Electronic Shift on the Fly with automatic locking front hubs with manual override.		
		Brakes - 4 wheel Anti-lock Braking System Traction Control - DRW Models		
		Fuel Capacity: 40 gallon single tank (aft axle)		
		Front Axle: 7,000 lb. Monobeam, Dana Super 60 Rear Axle: 12,000 lb. Full Floating Dana S110		
		Suspension: Heavy Duty Front Coil Springs (7,000 lbs.) Rear Leaf Springs, main & auxiliary (12,000 lbs) Shock absorbers, front & rear 1.38" Stabilizer bar, front and rear Power Steering Steering Damper		
		Instrumentation: multifunction switch message center - Gauges: Oil Pressure, Coolant Temperature, Trans Temp, w/Indicator Lights, Tachometer, Trip Odometer, Turbo boost, water in fuel warning light, low/contaminated diesel exhaust fluid warning lights, glow plug preheat indicator		
		Ambulance Prep Package - 47A Rear axle 4.10 Limited Slip #X4N Auxiliary transmission oil cooler Dual OEM HD Alternators (total 377 amps) 67B Dual 750 CCA Batteries Stationary elevated idle control (SEIC) Operated Commanded Regeneration (OCR) #98R		
		Safety/Security: Driver/Passenger frontal and side air bag/curtain Passenger side air bag deactivation switch Belt-Minder - chime & flashing warning light on instrument panel if belts not buckled Safety Belts - color coordinated with height adjustment (front outboard seating positions only) SOS Post-Crash Alert System Securi-lock Anti Theft Ignition		
		Tires: Front & Rear LT225/70R 19.5G All Season (6) #TFB Spare Tire: LT225/70R 19.5G (All Season) Wheels; 10 hole Disc, 19.5" x 6" Steel		
		Exterior Trim: Dual Electric Horns Chrome Front Bumper & Grille Surround Mirrors: Black POWER Telescoping Trailer tow w/Power-Heated Glass, integrated clearance lights and two way fold away Front Tow Hooks Lights - roof/marker clearance lights Under Hood Service Light Dual Beam Jewel Effect Headlights		



PART NO	S	DESCRIPTION	QTY	ID
		XLT Interior Cab Trim: #653A Air Conditioning Cloth Headliner, Map Pockets AM/FM Radio w/CD/Mp3 Player/Clock SYNC3 8" LCD Productivity Screen in IP Cluster (#918) Overhead Console with dual storage bin and map lights Interval Windshield Wipers Tilt Steering Wheel/Speed Control - steering wheel mounted Power Windows/Door Locks Black Vinyl Floor (No Floor Mats) Headlights on audible alarm Dual overhead Map Light Daytime Running Lights Front seats, high series cloth - 40/20/40 #3S  Color Scheme: Exterior Color: Oxford White #Z1 Interior Color: MEDIUM EARTH GRAY		
95-12-6150	< >	<b>F350/F450/F550 Vermillion Red (E4)</b> This option, when selected, takes precedence over the option in the standard chassis spec:  VERMILLION RED (VSO #4665D)  REQUIRES SPECIAL ORDER CHASSIS	1	PLG
96-32-1500		Fuel "Full Tank" -F-Series	1	PLG

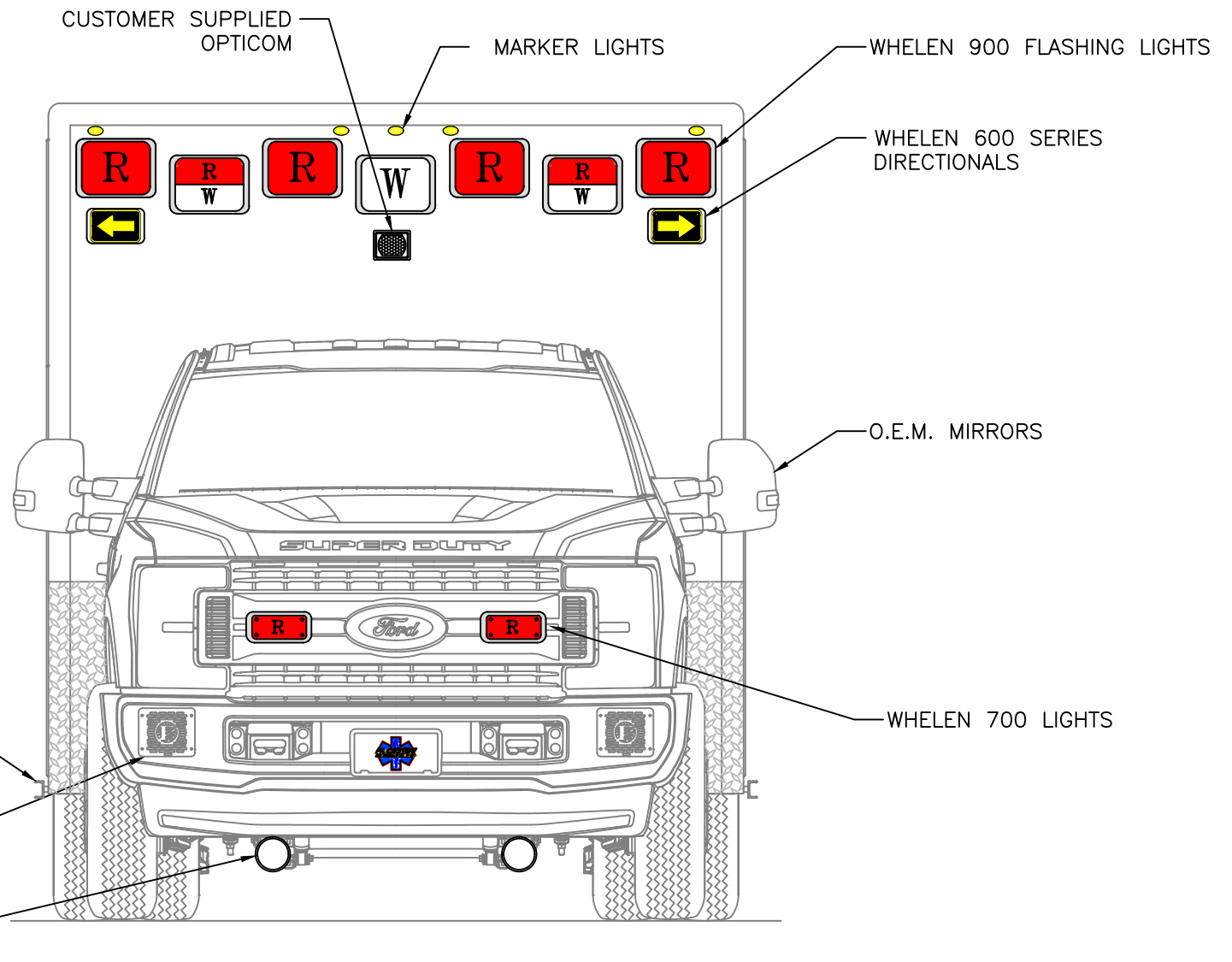
CUSTOM DESIGNED FOR  
**CITY OF NOVI**  
**FIRE DEPARTMENT**  
BY  
P.L. CUSTOM  
EMERGENCY VEHICLES

#### A4844

PAGE 1



**"NOTICE"**  
This drawing and data thereon shall not be duplicated, used or disclosed to others for procurement or manufacturing purposes, except as otherwise authorized by contract, without written permission of P.L. CUSTOM BODY & EQUIPMENT CO., INC. We reserve the right to make changes at any time, without notice, in materials, equipment & specifications. Written specifications take precedence over drawings which are for clarity only. All reproductions shall bear this notice.

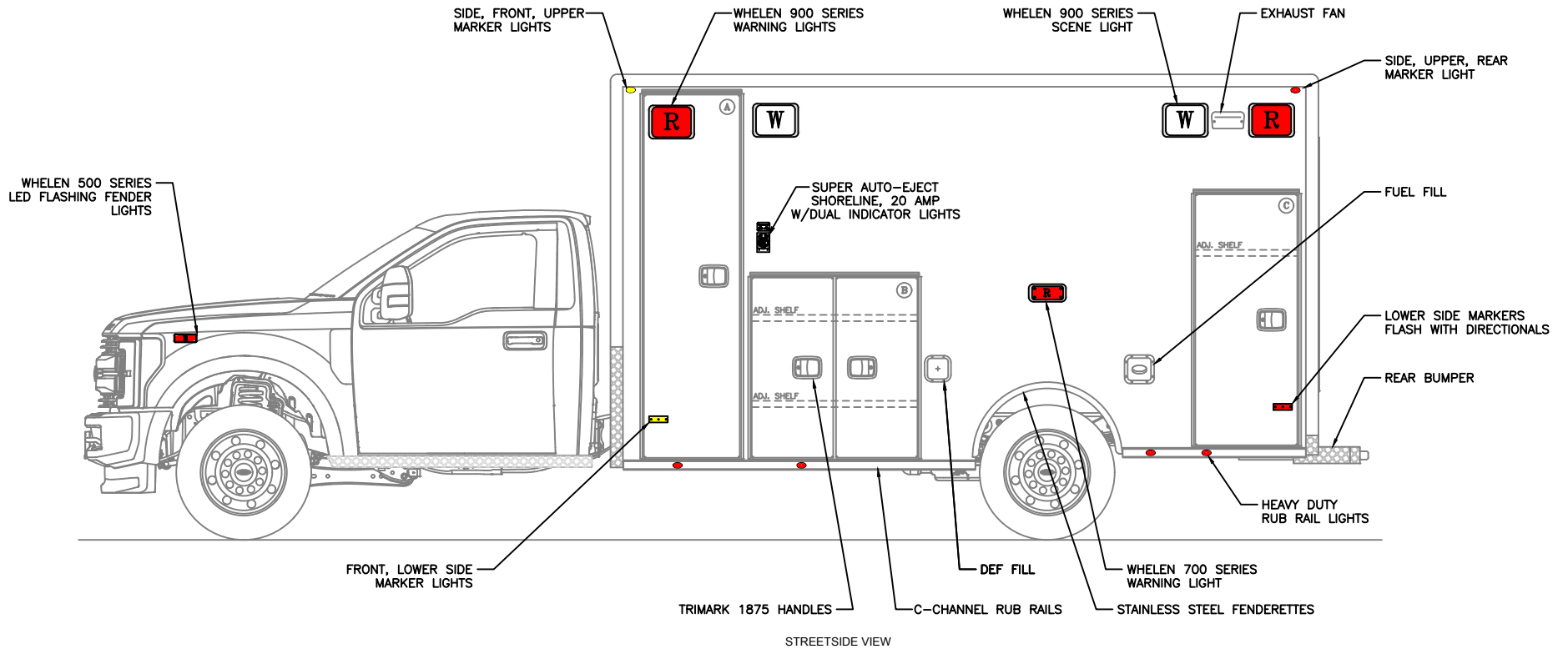


**EXTERIOR DIMENSIONS**  
 HEIGHT 112" (+/-2)  
 LENGTH 170 1/4"  
 WIDTH 99"

FRONT VIEW



**"NOTICE"**  
 This drawing and data thereon shall not be duplicated, used or disclosed to others for procurement or manufacturing purposes, except as otherwise authorized by contract, without written permission of P.L. CUSTOM BODY & EQUIPMENT CO., INC. We reserve the right to make changes at any time, without notice, in materials, equipment & specifications. Written specifications take precedence over drawings which are for clarity only. All reproductions shall bear this notice.



OPENING DESCRIPTIONS				
ALL DIMENSIONS APPROXIMATE				
	WIDTH	HEIGHT	DEPTH	PURPOSE
(A)	23	86	21	OXYGEN STORAGE
(B)	40	42	20	EXTERIOR STORAGE
(C)	26	59	20	EXTERIOR STORAGE

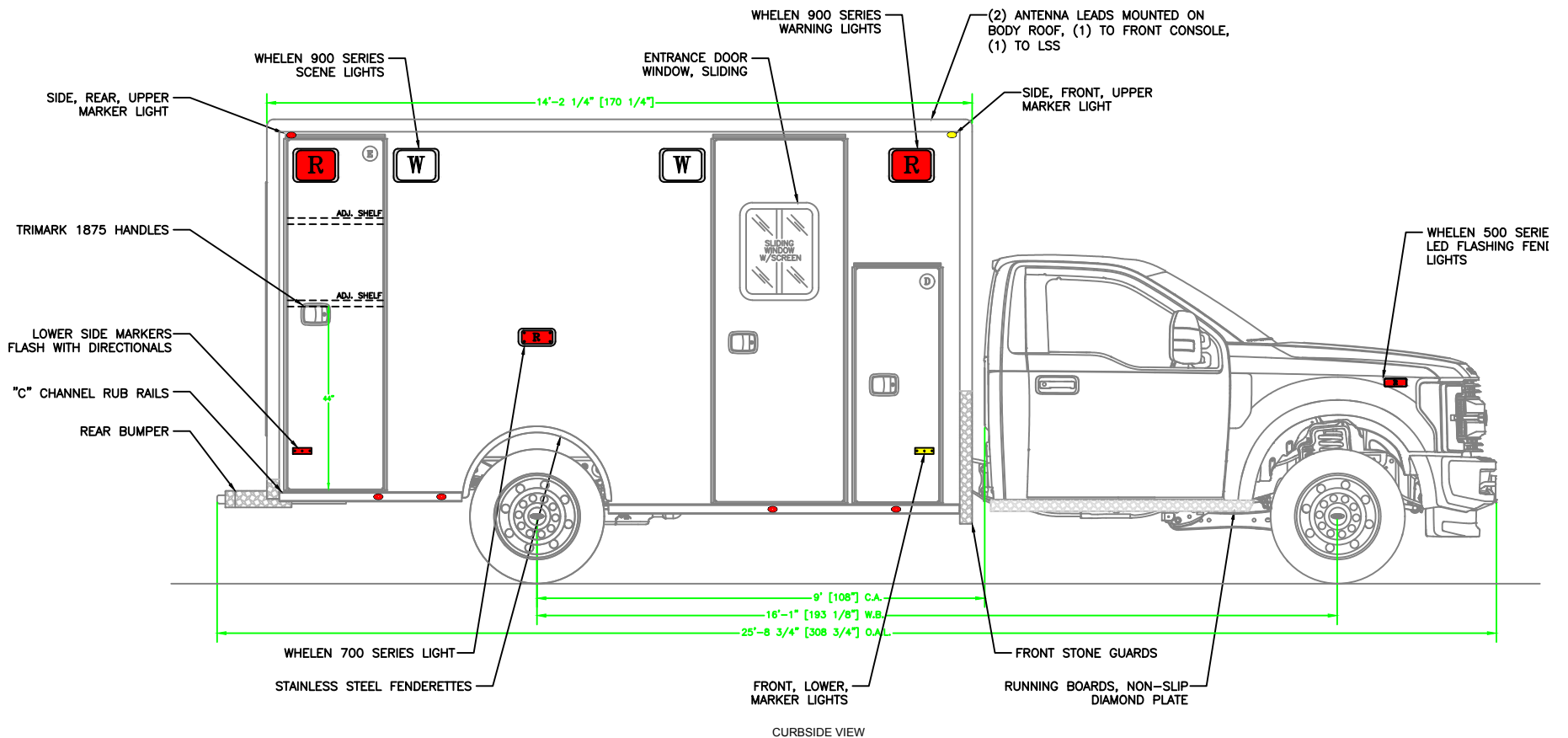
**EXTERIOR DIMENSIONS**  
 HEIGHT 112" (+/-2)  
 LENGTH 170 1/4"  
 WIDTH 99"

**NOTES:**

- 1.) DRAWINGS ARE FOR REPRESENTATIONAL PURPOSES ONLY.
- 2.) ALL DIMENSIONS SHOWN ARE APPROXIMATE.
- 3.) EXTERIOR COMPARTMENT DIMENSIONS REFLECT WALL TO WALL MEASUREMENTS. PASS THROUGH OPENINGS WILL BE SMALLER.
- 4.) INTERIOR CABINET DIMENSIONS REFLECT THE CABINET OPENING. PASS THROUGH OPENINGS WILL BE SMALLER.
- 5.) DIMENSIONS FOR OVERALL HEIGHT AND OVERALL LENGTH ARE APPROXIMATE UNTIL THE CHASSIS IS BUILT AND RECEIVED AT OUR FACTORY.



**"NOTICE"**  
 This drawing and data thereon shall not be duplicated, used or disclosed to others for procurement or manufacturing purposes, except as otherwise authorized by contract, without written permission of P.L. CUSTOM BODY & EQUIPMENT CO., INC. We reserve the right to make changes at any time, without notice, in materials, equipment & specifications. Written specifications take precedence over drawings which are for clarity only. All reproductions shall bear this notice.



OPENING DESCRIPTIONS				
ALL DIMENSIONS APPROXIMATE				
	WIDTH	HEIGHT	DEPTH	PURPOSE
(D)	20	55	33" ABOVE FLOOR 20" BELOW FLOOR	INTERIOR/EXTERIOR ACCESS STORAGE
(E)	24 1/2	83	21	BACKBOARD STORAGE
	29	80		SIDE ENTRANCE DOOR

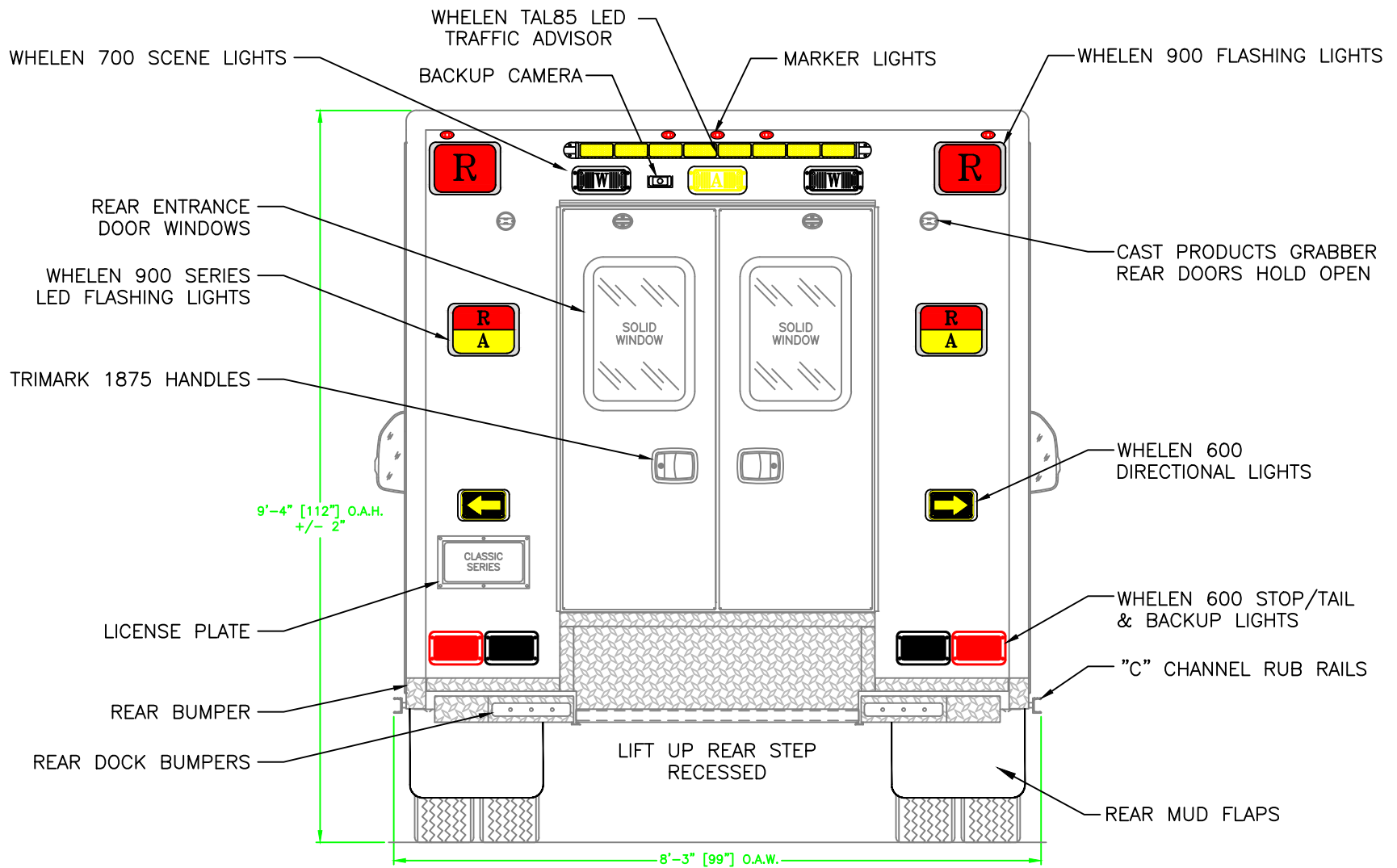
**EXTERIOR  
DIMENSIONS**  
 HEIGHT 112" (+/-2)  
 LENGTH 170 1/4"  
 WIDTH 99"

**NOTES:**

- 1.) DRAWINGS ARE FOR REPRESENTATIONAL PURPOSES ONLY.
- 2.) ALL DIMENSIONS SHOWN ARE APPROXIMATE.
- 3.) EXTERIOR COMPARTMENT DIMENSIONS REFLECT WALL TO WALL MEASUREMENTS. PASS THROUGH OPENINGS WILL BE SMALLER.
- 4.) INTERIOR CABINET DIMENSIONS REFLECT THE CABINET OPENING. PASS THROUGH OPENINGS WILL BE SMALLER.
- 5.) DIMENSIONS FOR OVERALL HEIGHT AND OVERALL LENGTH ARE APPROXIMATE UNTIL THE CHASSIS IS BUILT AND RECEIVED AT OUR FACTORY.



**"NOTICE"**  
 This drawing and data thereon shall not be duplicated, used or disclosed to others for procurement or manufacturing purposes, except as otherwise authorized by contract, without written permission of P.L. CUSTOM BODY & EQUIPMENT CO., INC. We reserve the right to make changes at any time, without notice, in materials, equipment & specifications. Written specifications take precedence over drawings which are for clarity only. All reproductions shall bear this notice.



REAR VIEW

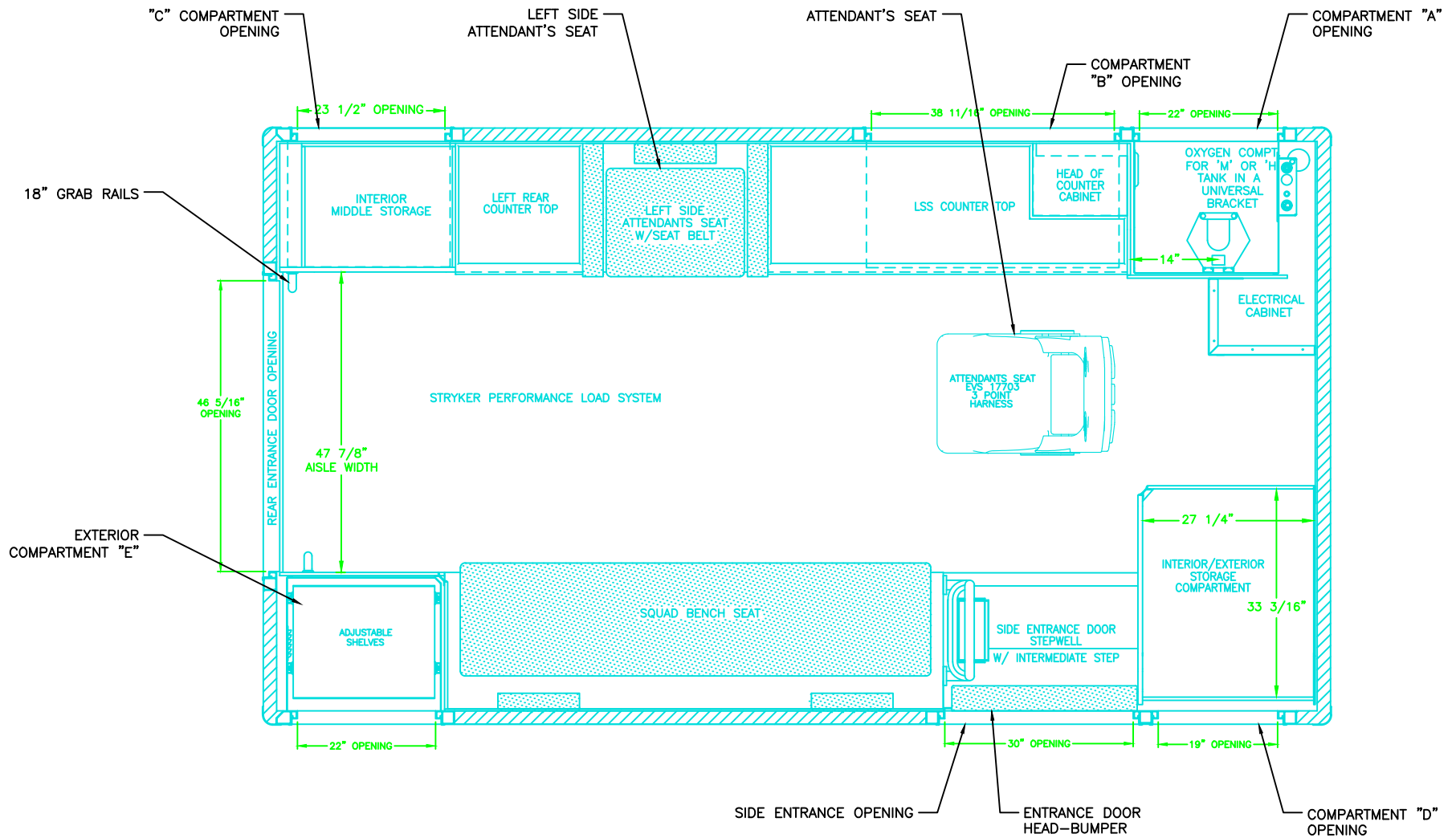
OPENING DESCRIPTIONS				
ALL DIMENSIONS APPROXIMATE				
WIDTH	HEIGHT	DEPTH	PURPOSE	
44 1/4	60		REAR ENTRANCE DOORS	

NOTES:

- 1.) DRAWINGS ARE FOR REPRESENTATIONAL PURPOSES ONLY.
- 2.) ALL DIMENSIONS SHOWN ARE APPROXIMATE.
- 3.) EXTERIOR COMPARTMENT DIMENSIONS REFLECT WALL TO WALL MEASUREMENTS. PASS THROUGH OPENINGS WILL BE SMALLER.
- 4.) INTERIOR CABINET DIMENSIONS REFLECT THE CABINET OPENING. PASS THROUGH OPENINGS WILL BE SMALLER.
- 5.) DIMENSIONS FOR OVERALL HEIGHT AND OVERALL LENGTH ARE APPROXIMATE UNTIL THE CHASSIS IS BUILT AND RECEIVED AT OUR FACTORY.



**"NOTICE"**  
 This drawing and data thereon shall not be duplicated, used or disclosed to others for procurement or manufacturing purposes, except as otherwise authorized by contract, without written permission of P.L. CUSTOM BODY & EQUIPMENT CO., INC. We reserve the right to make changes at any time, without notice, in materials, equipment & specifications. Written specifications take precedence over drawings which are for clarity only. All reproductions shall bear this notice.



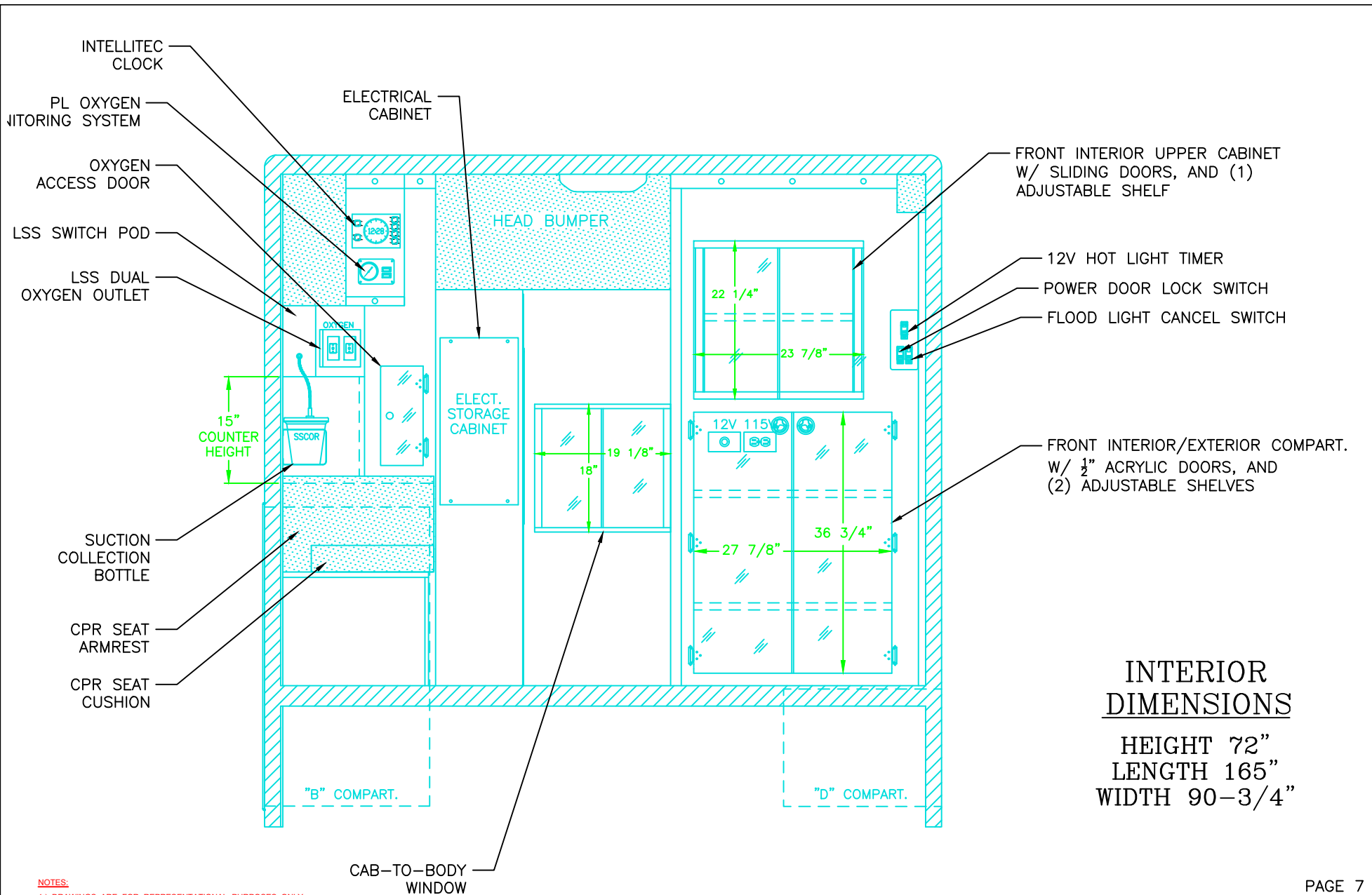
FLOOR PLAN

**NOTES:**

- 1.) DRAWINGS ARE FOR REPRESENTATIONAL PURPOSES ONLY.
- 2.) ALL DIMENSIONS SHOWN ARE APPROXIMATE.
- 3.) EXTERIOR COMPARTMENT DIMENSIONS REFLECT WALL TO WALL MEASUREMENTS. PASS THROUGH OPENINGS WILL BE SMALLER.
- 4.) INTERIOR CABINET DIMENSIONS REFLECT THE CABINET OPENING. PASS THROUGH OPENINGS WILL BE SMALLER.
- 5.) DIMENSIONS FOR OVERALL HEIGHT AND OVERALL LENGTH ARE APPROXIMATE UNTIL THE CHASSIS IS BUILT AND RECEIVED AT OUR FACTORY.



**"NOTICE"**  
 This drawing and data thereon shall not be duplicated, used or disclosed to others for procurement or manufacturing purposes, except as otherwise authorized by contract, without written permission of P.L. CUSTOM BODY & EQUIPMENT CO., INC. We reserve the right to make changes at any time, without notice, in materials, equipment & specifications. Written specifications take precedence over drawings which are for clarity only. All reproductions shall bear this notice.



## INTERIOR DIMENSIONS

HEIGHT 72"  
 LENGTH 165"  
 WIDTH 90-3/4"

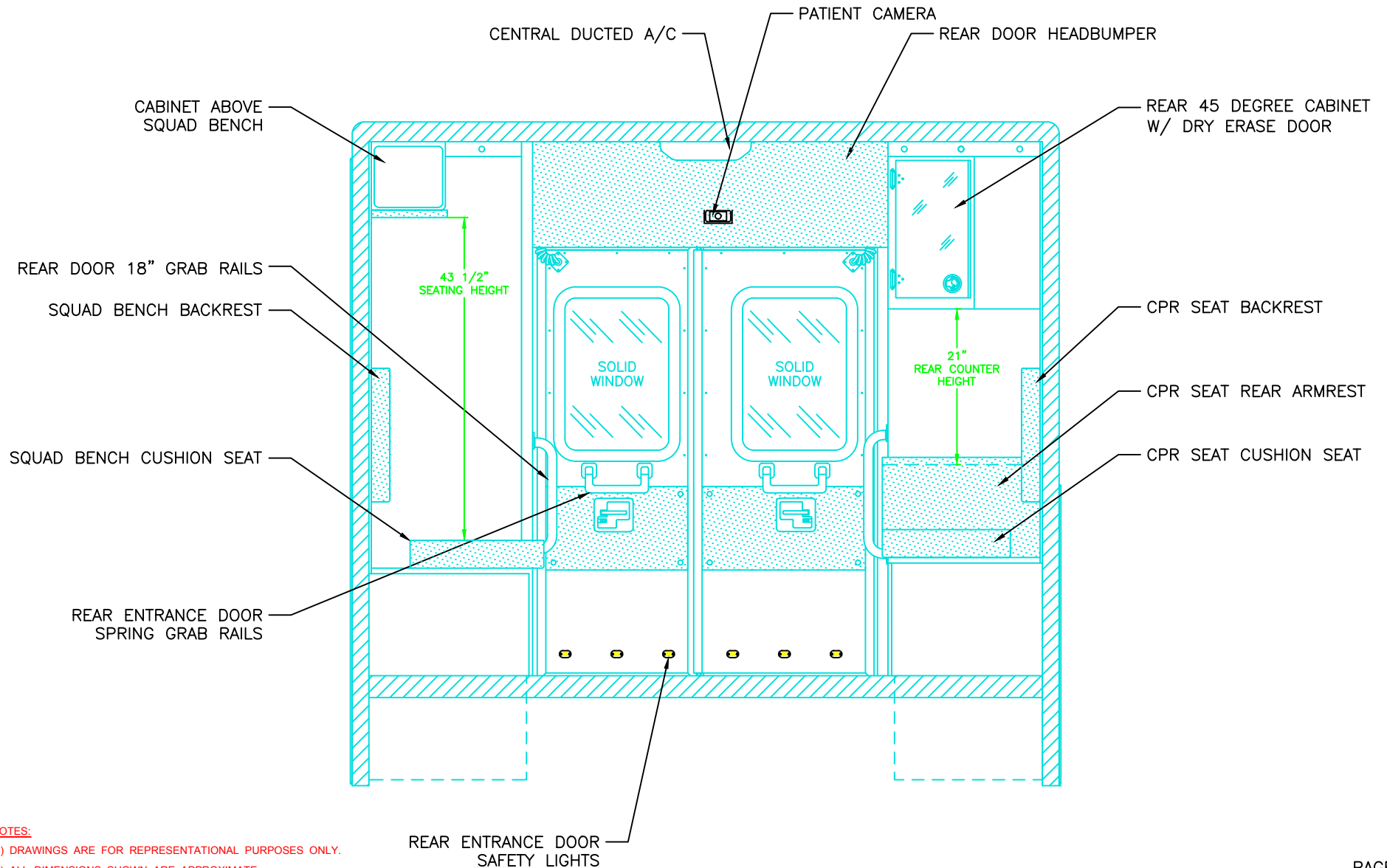
- NOTES:**
- 1.) DRAWINGS ARE FOR REPRESENTATIONAL PURPOSES ONLY.
  - 2.) ALL DIMENSIONS SHOWN ARE APPROXIMATE.
  - 3.) EXTERIOR COMPARTMENT DIMENSIONS REFLECT WALL TO WALL MEASUREMENTS. PASS THROUGH OPENINGS WILL BE SMALLER.
  - 4.) INTERIOR CABINET DIMENSIONS REFLECT THE CABINET OPENING. PASS THROUGH OPENINGS WILL BE SMALLER.
  - 5.) DIMENSIONS FOR OVERALL HEIGHT AND OVERALL LENGTH ARE APPROXIMATE UNTIL THE CHASSIS IS BUILT AND RECEIVED AT OUR FACTORY.

FRONT VIEW



**"NOTICE"**  
 This drawing and data thereon shall not be duplicated, used or disclosed to others for procurement or manufacturing purposes, except as otherwise authorized by contract, without written permission of P.L. CUSTOM BODY & EQUIPMENT CO., INC. We reserve the right to make changes at any time, without notice, in materials, equipment & specifications. Written specifications take precedence over drawings which are for clarity only. All reproductions shall bear this notice.





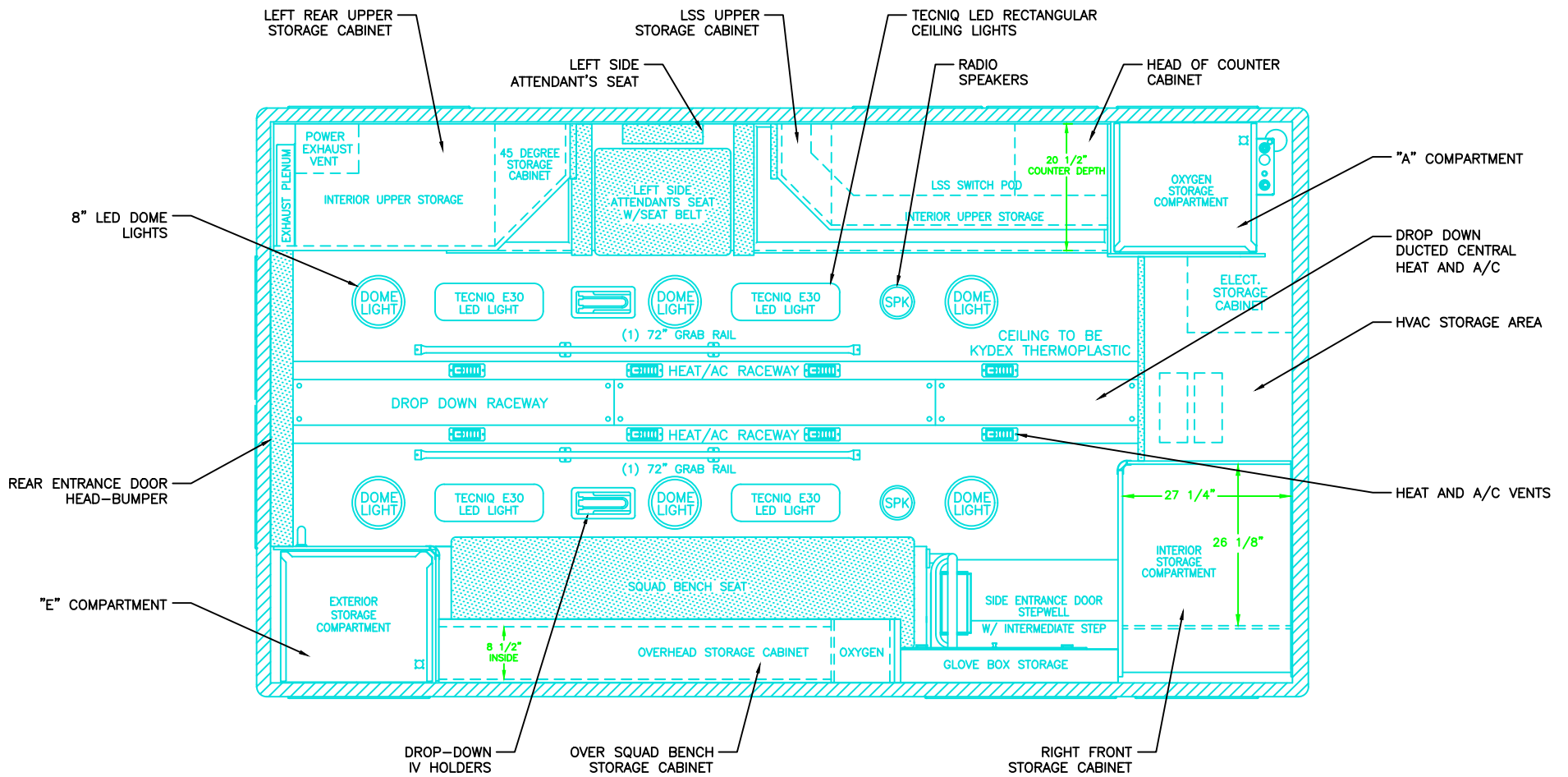
REAR ENTRANCE DOOR SAFETY LIGHTS

REAR VIEW

- NOTES:**
- 1.) DRAWINGS ARE FOR REPRESENTATIONAL PURPOSES ONLY.
  - 2.) ALL DIMENSIONS SHOWN ARE APPROXIMATE.
  - 3.) EXTERIOR COMPARTMENT DIMENSIONS REFLECT WALL TO WALL MEASUREMENTS. PASS THROUGH OPENINGS WILL BE SMALLER.
  - 4.) INTERIOR CABINET DIMENSIONS REFLECT THE CABINET OPENING. PASS THROUGH OPENINGS WILL BE SMALLER.
  - 5.) DIMENSIONS FOR OVERALL HEIGHT AND OVERALL LENGTH ARE APPROXIMATE UNTIL THE CHASSIS IS BUILT AND RECEIVED AT OUR FACTORY.



**"NOTICE"**  
 This drawing and data thereon shall not be duplicated, used or disclosed to others for procurement or manufacturing purposes, except as otherwise authorized by contract, without written permission of P.L. CUSTOM BODY & EQUIPMENT CO., INC. We reserve the right to make changes at any time, without notice, in materials, equipment & specifications. Written specifications take precedence over drawings which are for clarity only. All reproductions shall bear this notice.



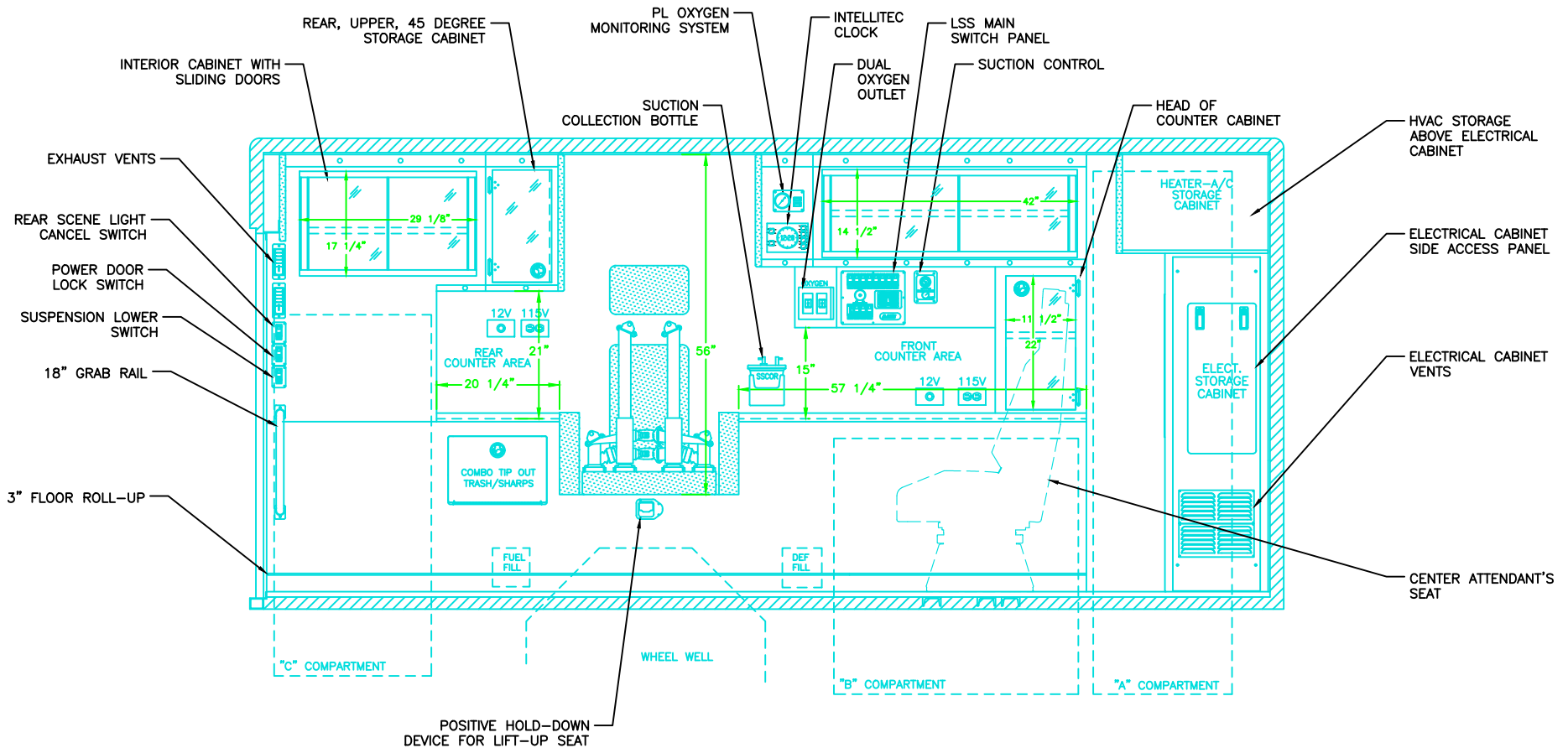
CEILING VIEW

**NOTES:**

- 1.) DRAWINGS ARE FOR REPRESENTATIONAL PURPOSES ONLY.
- 2.) ALL DIMENSIONS SHOWN ARE APPROXIMATE.
- 3.) EXTERIOR COMPARTMENT DIMENSIONS REFLECT WALL TO WALL MEASUREMENTS. PASS THROUGH OPENINGS WILL BE SMALLER.
- 4.) INTERIOR CABINET DIMENSIONS REFLECT THE CABINET OPENING. PASS THROUGH OPENINGS WILL BE SMALLER.
- 5.) DIMENSIONS FOR OVERALL HEIGHT AND OVERALL LENGTH ARE APPROXIMATE UNTIL THE CHASSIS IS BUILT AND RECEIVED AT OUR FACTORY.



**"NOTICE"**  
 This drawing and data thereon shall not be duplicated, used or disclosed to others for procurement or manufacturing purposes, except as otherwise authorized by contract, without written permission of P.L. CUSTOM BODY & EQUIPMENT CO., INC. We reserve the right to make changes at any time, without notice, in materials, equipment & specifications. Written specifications take precedence over drawings which are for clarity only. All reproductions shall bear this notice.



## INTERIOR DIMENSIONS

HEIGHT 72"  
 LENGTH 165"  
 WIDTH 90-3/4"

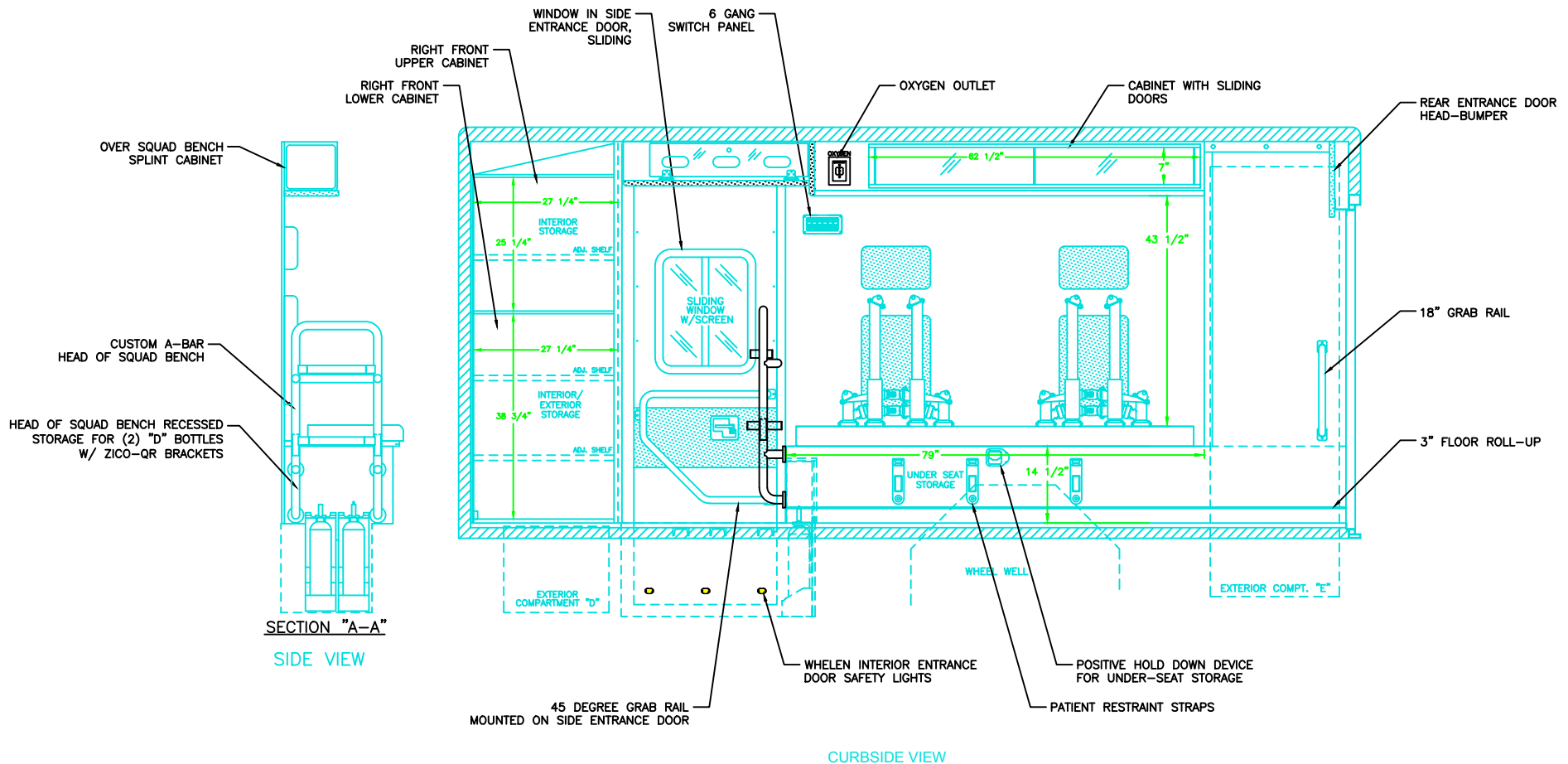
### NOTES:

- 1.) DRAWINGS ARE FOR REPRESENTATIONAL PURPOSES ONLY.
- 2.) ALL DIMENSIONS SHOWN ARE APPROXIMATE.
- 3.) EXTERIOR COMPARTMENT DIMENSIONS REFLECT WALL TO WALL MEASUREMENTS. PASS THROUGH OPENINGS WILL BE SMALLER.
- 4.) INTERIOR CABINET DIMENSIONS REFLECT THE CABINET OPENING. PASS THROUGH OPENINGS WILL BE SMALLER.
- 5.) DIMENSIONS FOR OVERALL HEIGHT AND OVERALL LENGTH ARE APPROXIMATE UNTIL THE CHASSIS IS BUILT AND RECEIVED AT OUR FACTORY.

### STREETSIDE VIEW



**"NOTICE"**  
 This drawing and data thereon shall not be duplicated, used or disclosed to others for procurement or manufacturing purposes, except as otherwise authorized by contract, without written permission of P.L. CUSTOM BODY & EQUIPMENT CO., INC. We reserve the right to make changes at any time, without notice, in materials, equipment & specifications. Written specifications take precedence over drawings which are for clarity only. All reproductions shall bear this notice.



**NOTES:**

- 1.) DRAWINGS ARE FOR REPRESENTATIONAL PURPOSES ONLY.
- 2.) ALL DIMENSIONS SHOWN ARE APPROXIMATE.
- 3.) EXTERIOR COMPARTMENT DIMENSIONS REFLECT WALL TO WALL MEASUREMENTS. PASS THROUGH OPENINGS WILL BE SMALLER.
- 4.) INTERIOR CABINET DIMENSIONS REFLECT THE CABINET OPENING. PASS THROUGH OPENINGS WILL BE SMALLER.
- 5.) DIMENSIONS FOR OVERALL HEIGHT AND OVERALL LENGTH ARE APPROXIMATE UNTIL THE CHASSIS IS BUILT AND RECEIVED AT OUR FACTORY.

**INTERIOR DIMENSIONS**

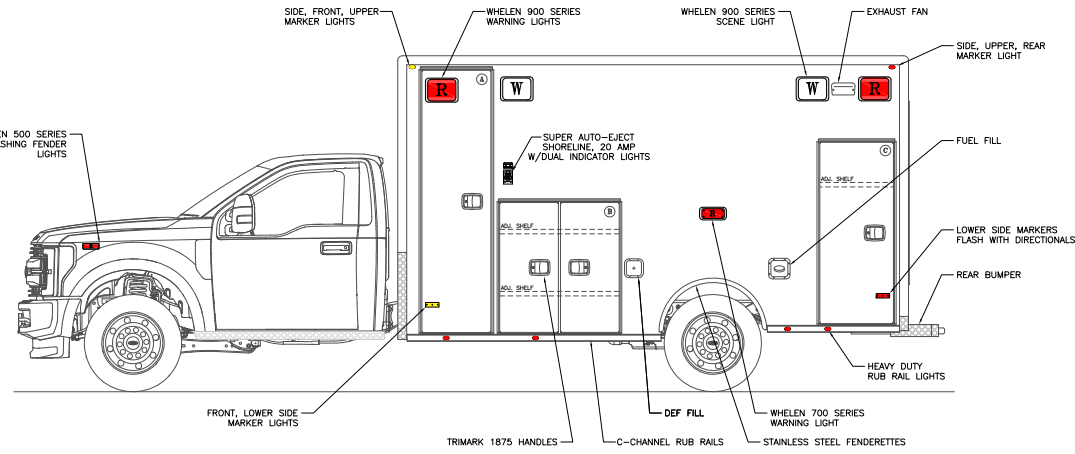
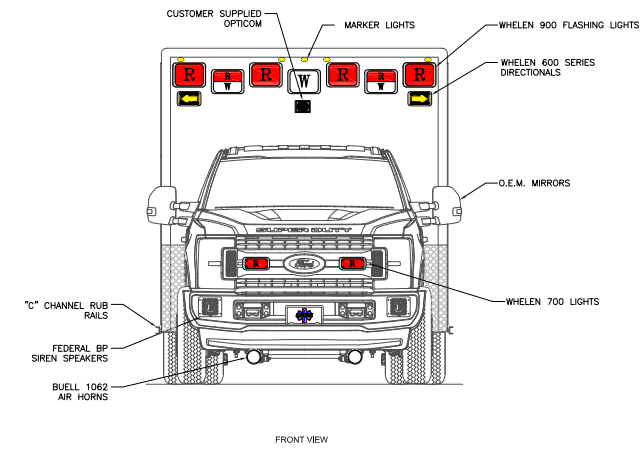
HEIGHT 72"  
 LENGTH 165"  
 WIDTH 90-3/4"



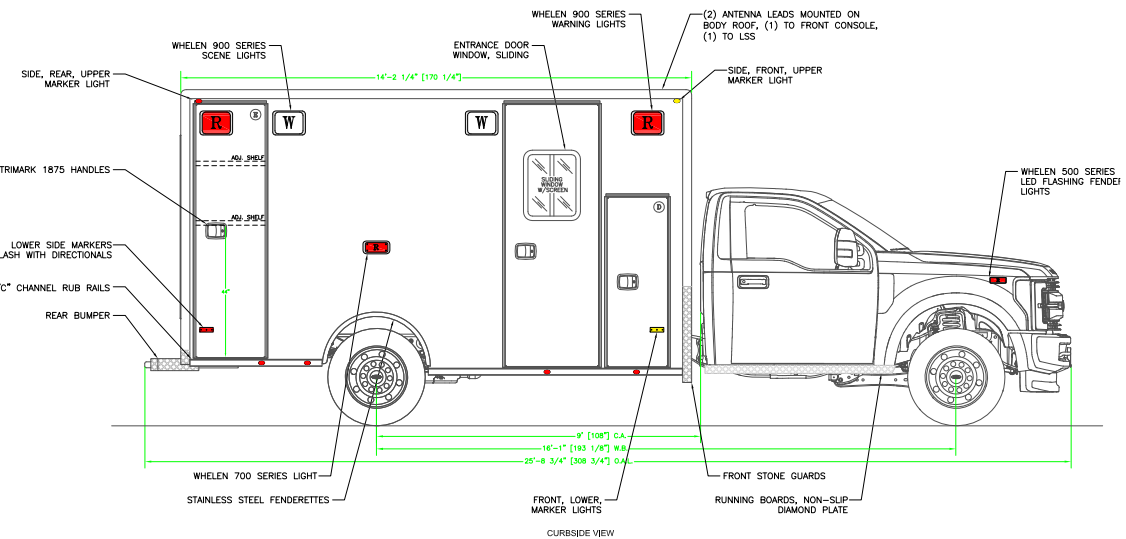
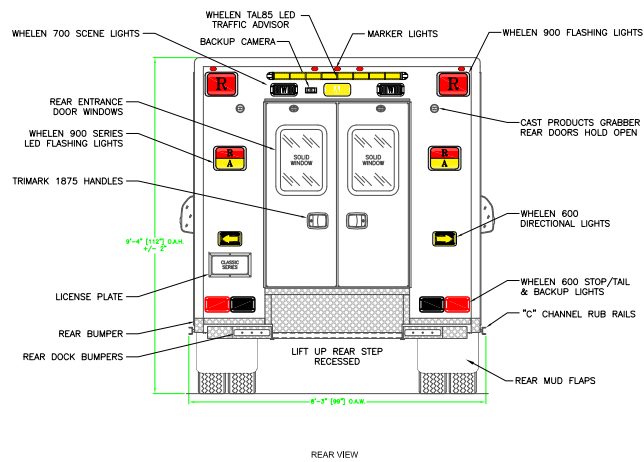
**"NOTICE"**  
 This drawing and data thereon shall not be duplicated, used or disclosed to others for procurement or manufacturing purposes, except as otherwise authorized by contract, without written permission of P.L. CUSTOM BODY & EQUIPMENT CO., INC. We reserve the right to make changes at any time, without notice, in materials, equipment & specifications. Written specifications take precedence over drawings which are for clarity only. All reproductions shall bear this notice.

# CUSTOM DESIGNED FOR CITY OF NOVI FIRE DEPARTMENT

BY  
P.L. CUSTOM  
EMERGENCY VEHICLES

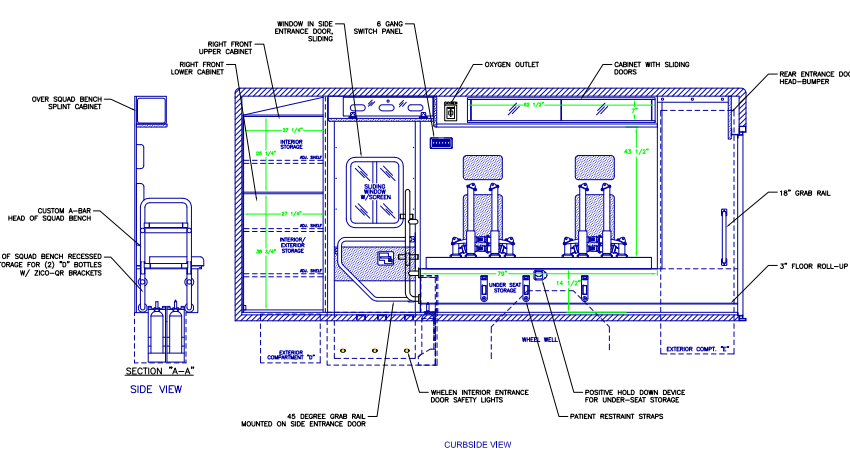
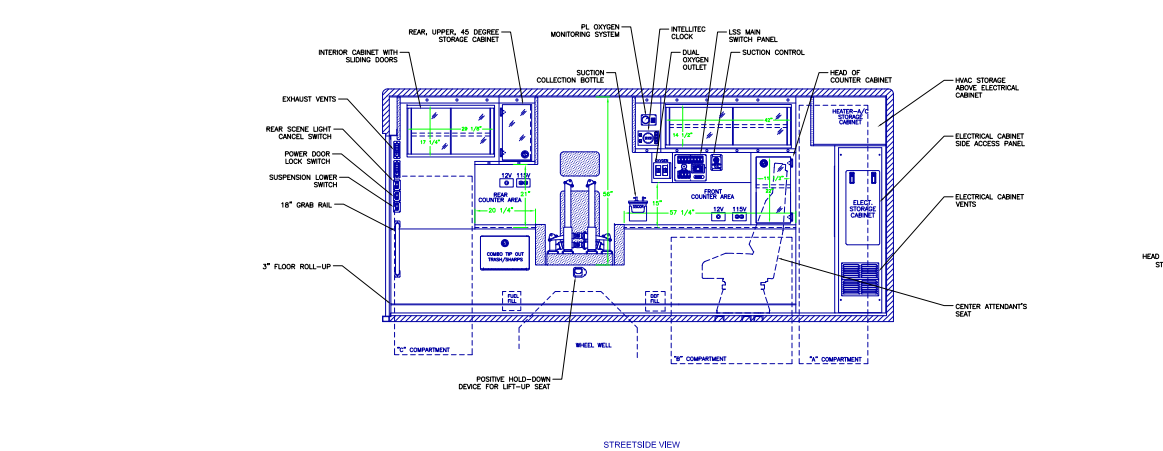
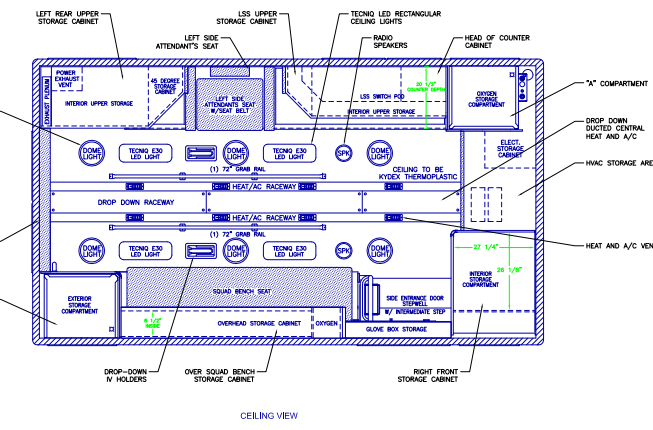
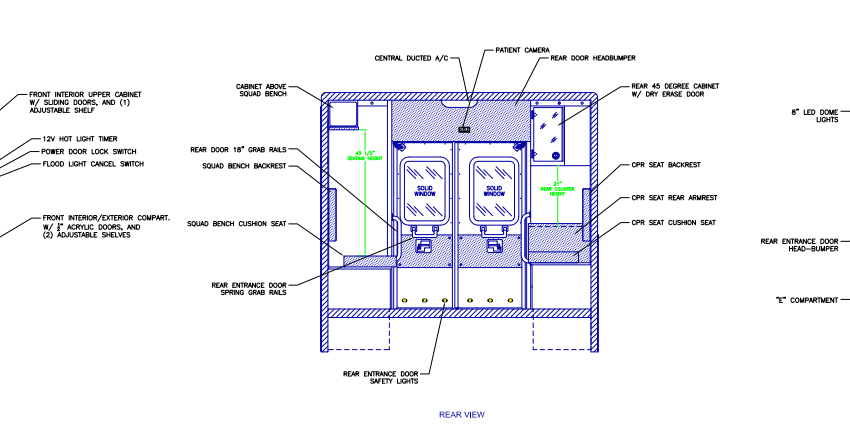
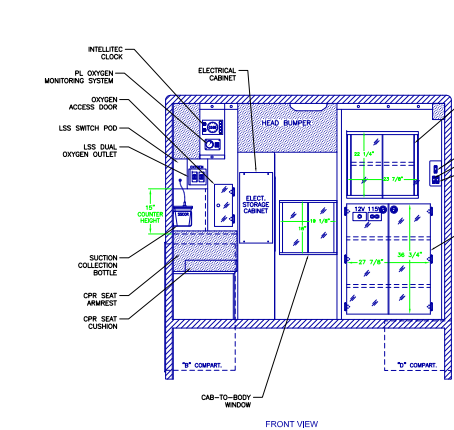
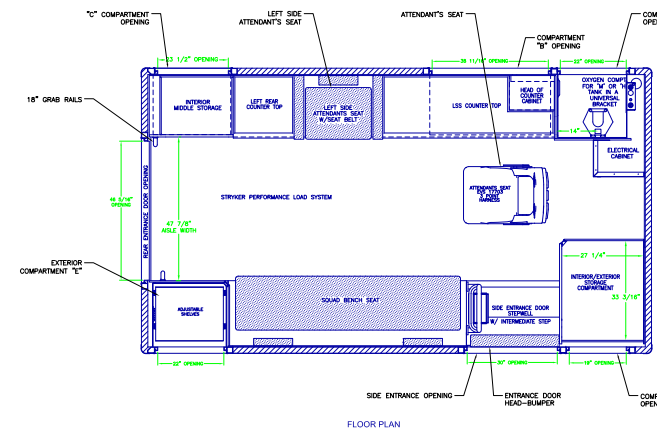


OPENING DESCRIPTIONS				
	WIDTH	HEIGHT	DEPTH	PURPOSE
(A)	23	86	21	OXYGEN STORAGE
(B)	40	42	20	EXTERIOR STORAGE
(C)	26	59	20	EXTERIOR STORAGE
(D)	20	55	33" ABOVE FLOOR 20" BELOW FLOOR	INTERIOR/EXTERIOR ACCESS STORAGE
(E)	24 1/2	83	21	BACKBOARD STORAGE
	29	83		SIDE ENTRANCE DOOR
	44 1/4	60		REAR ENTRANCE DOORS
ALL DIMENSIONS APPROXIMATE				



**INTERIOR DIMENSIONS**  
HEIGHT 72"  
LENGTH 165"  
WIDTH 90-3/4"

**EXTERIOR DIMENSIONS**  
HEIGHT 112" (+/-2)  
LENGTH 170 1/4"  
WIDTH 99"



- NOTES:**
- 1) DRAWINGS ARE FOR REPRESENTATIONAL PURPOSES ONLY.
  - 2) ALL DIMENSIONS SHOWN ARE APPROXIMATE.
  - 3) EXTERIOR COMPARTMENT DIMENSIONS REFLECT WALL TO WALL MEASUREMENTS. PASS THROUGH OPENINGS WILL BE SMALLER.
  - 4) INTERIOR CABINET DIMENSIONS REFLECT THE CABINET OPENING. PASS THROUGH OPENINGS WILL BE SMALLER.
  - 5) DIMENSIONS FOR OVERALL HEIGHT AND OVERALL LENGTH ARE APPROXIMATE UNTIL THE CHASSIS IS BUILT AND RECEIVED AT OUR FACTORY.



"NOTICE" This drawing and data thereon shall not be duplicated, used or disclosed to others for procurement or manufacturing purposes, except as otherwise authorized by contract, without written permission of P.L. CUSTOM BODY & EQUIPMENT CO., INC. We reserve the right to make changes at any time, without notice, in materials, equipment & specifications. Written specifications take precedence over drawings which are for clarity only. All reproductions shall bear this notice.

DWG REV.	OW REV.	DATE	APP.
CLASSIC SERIES			
CITY OF NOVI			
DO NOT SCALE DRAWING			
Drawn:	ROB MAZZA	Sheet:	5/28/19
Scale:	3/4" = 1'-0"	Sheet:	1 of 1
Proj:	0001	Proj:	AMB44
APP.			