



CITY OF NOVI CITY COUNCIL
SEPTEMBER 13, 2021

SUBJECT: Approval of Change Order No. 4 to Pro-Line Asphalt Paving Corporation, to rehabilitate the driveway access to the Country Place Sanitary Lift Station as part of the 2021 Neighborhood Road Program – Asphalt Streets contract, in the amount of \$74,250.

SUBMITTING DEPARTMENT: Department of Public Works, Engineering Division

EXPENDITURE REQUIRED	\$ 74,250.00
AMOUNT BUDGETED	\$ 92,210.00
APPROPRIATION REQUIRED	\$ 0
LINE ITEM NUMBER	592-592.00-976.053

BACKGROUND INFORMATION:

During the emergency sanitary sewer lining along two of the pipe segments on Broquet Drive, near Meadowbrook Road, our Water and Sewer Division had to temporarily shut down the Country Place Sanitary Lift Station. This meant that the lining crew along with City of Novi crews had to manually pump and haul the sewerage from the Lift Station wet well. The number and weight of trucks and equipment to pump and haul was more than the access driveway to the Lift Station could handle. Therefore, much of the existing asphalt was broken or heaved up.

City personnel met with the management company for the Country Place Condominium Association to develop a correct scope for rehabilitating and/or reconstructing the driveway access that everyone would be satisfied with.

Since Pro-Line Asphalt Paving Corporation is already in town working on the Neighborhood Road Program (which includes several lift station driveways), we felt this is the best suitable contractor to complete the work.

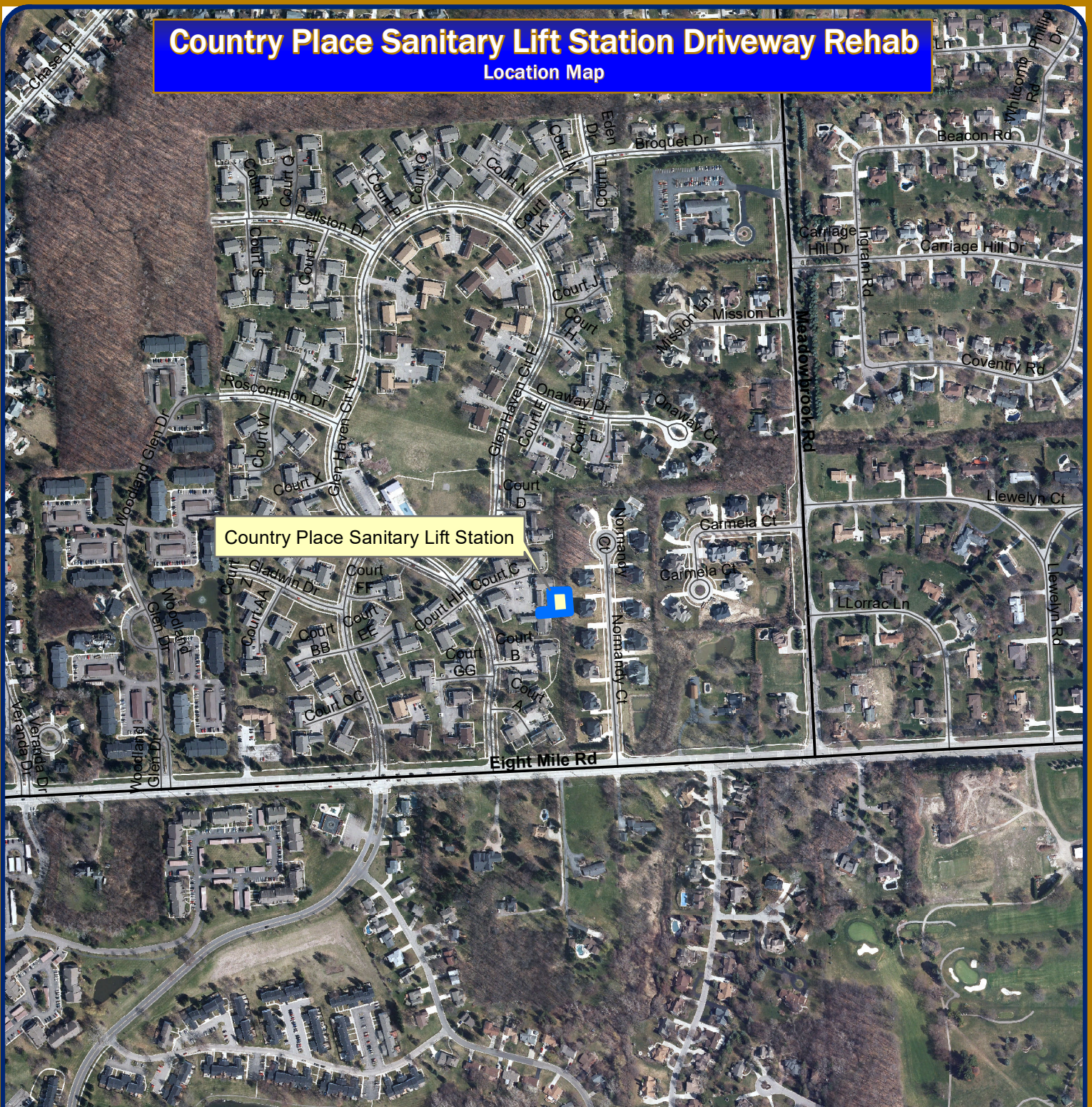
The contract administration and geotechnical engineering services related to this project change order will be granted to the following pre-qualified firms using the fee percentages in the Agreements for Professional Engineering Services and Geotechnical Engineering Services for Public Projects.

OHM-Advisors			
Country Place Lift Station Drive Rehab	Contract Administration	4.75% of the construction contract (\$74,250 x 4.75%)	\$ 3,526.88
	Crew Days	\$700 daily inspection fee x 8 days	\$ 5,600.00
Testing Engineers & Consultants, Inc. (TEC)			
Country Place Lift Station Drive Rehab	Material Testing Services	1.9% of the construction contract (\$74,250 x 1.9%)	\$ 1,410.75

RECOMMENDED ACTION: Approval of Change Order No. 4 to Pro-Line Asphalt Paving Corporation, to rehabilitate the driveway access to the Country Place Sanitary Lift Station as part of the 2021 Neighborhood Road Program – Asphalt Streets contract, in the amount of \$74,250.

Country Place Sanitary Lift Station Driveway Rehab

Location Map



Country Place Sanitary Lift Station

Map Legend

- Freeway
- Major Streets
- Minor Streets

Novi 2015.sid
RGB

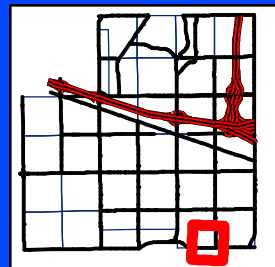
- Red: Band_1
- Green: Band_2
- Blue: Band_3

Map Author: Aaron J. Staup
Date: August 30, 2021
Project: 2021 NRP - Asphalt Streets
Version #: 1

Amended By:
Date:
Department:

MAP INTERPRETATION NOTICE

Map information depicted is not intended to replace or substitute for any official or primary source. This map was intended to meet National Map Accuracy Standards and use the most recent, accurate sources available to the people of the City of Novi. Boundary measurements and area calculations are approximate and should not be construed as survey measurements performed by a licensed Michigan Surveyor as defined in Michigan Public Act 132 of 1970 as amended. Please contact the City GIS Manager to confirm source and accuracy information related to this map.



City of Novi

Engineering Division
Department of Public Works
26300 Lee BeGole Drive
Novi, MI 48375
cityofnovi.org

0 115 230 460 690

1 inch = 552 feet



