



CARLISLE

WORTMAN
associates, inc.

605 S. Main Street, Ste. 1
Ann Arbor, MI 48104

(734) 662-2200
(734) 662-1935 Fax

August 22, 2013

Barb McBeth, Community Development Deputy Director
City of Novi
45175 West Ten Mile Road
Novi, Michigan 48375

Re: Town Center Study – Status Update

Dear Ms. McBeth:

Over the past few months, we have been working with you and Novi's planning staff to evaluate several aspects of the Town Center area. The purpose of the study is to evaluate the current Master Plan designations, the zoning ordinance regulations for the TC and TC-1 districts, pedestrian nodes and amenities, as well as signage and wayfinding options within the study area. We will be attending the next Planning Commission meeting to give an update of the progress we've made on the study to date.

Attached is a map that shows how the study area has been divided into sub-areas to facilitate examination of the themes mentioned above. Our presentation at the upcoming meeting will describe the thinking behind the study sub-areas and the study evaluation process. We will also provide a brief re-cap of the results of stakeholder interviews held to gather input and ideas about the area, and the next steps we will be undertaking.

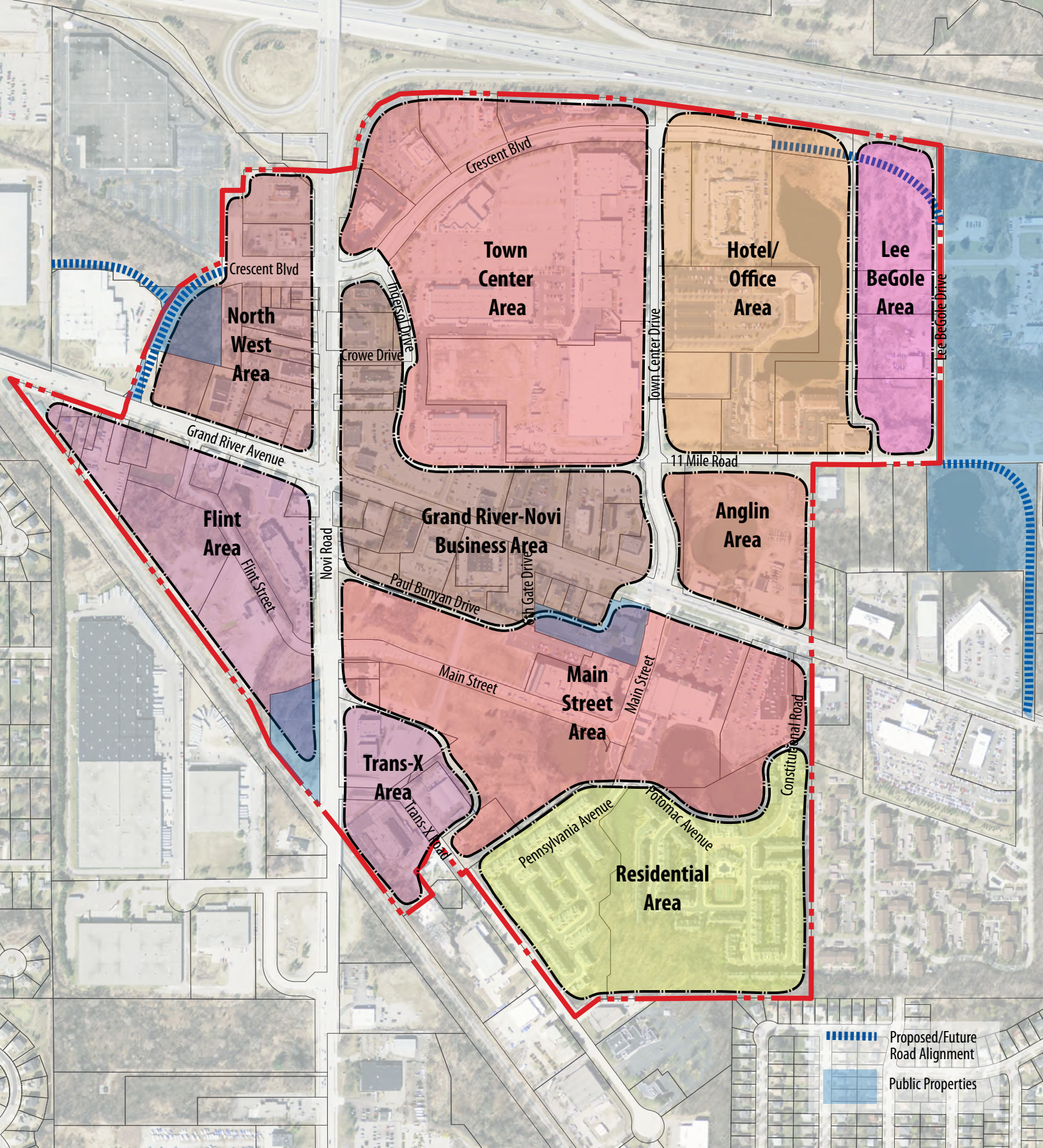
I look forward to meeting with the Planning Commission and providing an update of our work.

Sincerely,

CARLISLE/WORTMAN ASSOCIATES, INC.

R. Donald Wortman, LLA, AICP
Vice President

Novi Town Center Study Sub Areas



Proposed/Future Road Alignment
Public Properties