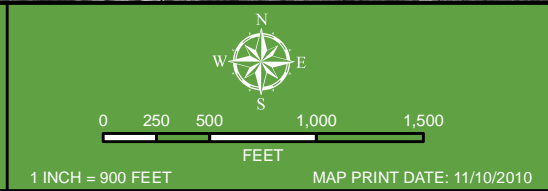


LAKESHORE PARK 2010 UPDATE PATHWAY AND SIDEWALK PRIORITIZATION ANALYSIS AND PROCESS



CITY OF NOVI
DEPARTMENT OF COMMUNITY DEVELOPMENT
45175 W. TEN MILE ROAD
NOVI, MI 48375-3024
(248) 347-0415
MAP AUTHOR: CHRIS BLOUGH,
GIS MANAGER

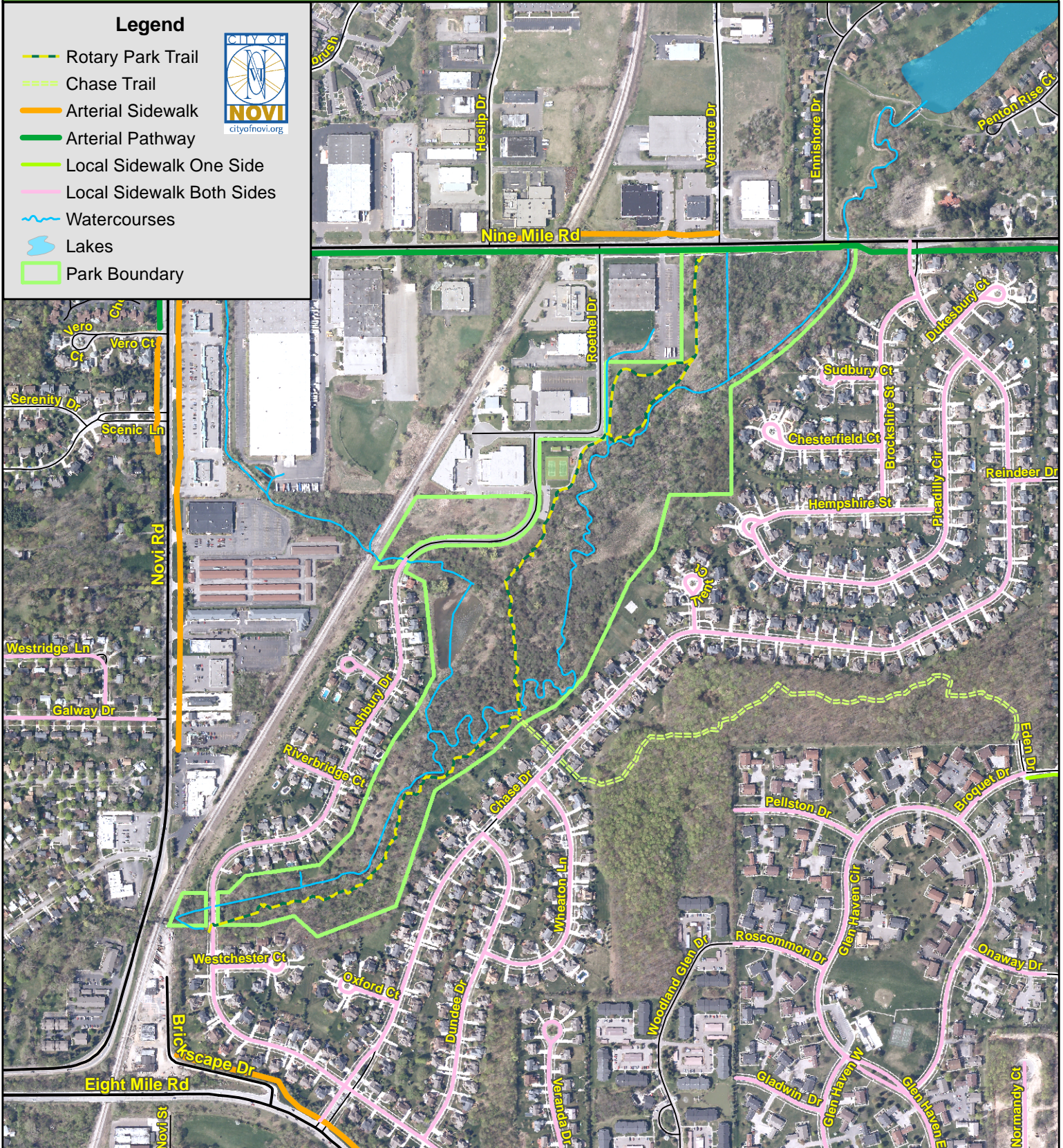


MAP INTERPRETATION NOTICE
Map information depicted is not intended to replace or substitute for any official or primary source. This map was intended to meet National Map Accuracy Standards and use the most recent, accurate sources available to the people of the City of Novi. Boundary measurements and area calculations are approximate and should not be construed as survey measurements performed by a licensed Michigan Surveyor as defined in Michigan Public Act 132 of 1970 as amended. Please contact the City GIS Manager to confirm source and accuracy information related to this map.

ROTARY PARK 2010 UPDATE PATHWAY AND SIDEWALK PRIORITIZATION ANALYSIS AND PROCESS

Legend

- Rotary Park Trail
- Chase Trail
- Arterial Sidewalk
- Arterial Pathway
- Local Sidewalk One Side
- Local Sidewalk Both Sides
- Watercourses
- Lakes
- Park Boundary



CITY OF NOVI

DEPARTMENT OF COMMUNITY DEVELOPMENT
45175 W. TEN MILE ROAD
NOVI, MI 48375-3024
(248) 347-0415
MAP AUTHOR: CHRIS BLOUGH,
GIS MANAGER



1 INCH = 700 FEET

MAP PRINT DATE: 11/10/2010

MAP INTERPRETATION NOTICE

Map information depicted is not intended to replace or substitute for any official or primary source. This map was intended to meet National Map Accuracy Standards and use the most recent, accurate sources available to the people of the City of Novi. Boundary measurements and area calculations are approximate and should not be construed as survey measurements performed by a licensed Michigan Surveyor as defined in Michigan Public Act 132 of 1970 as amended. Please contact the City GIS Manager to confirm source and accuracy information related to this map.

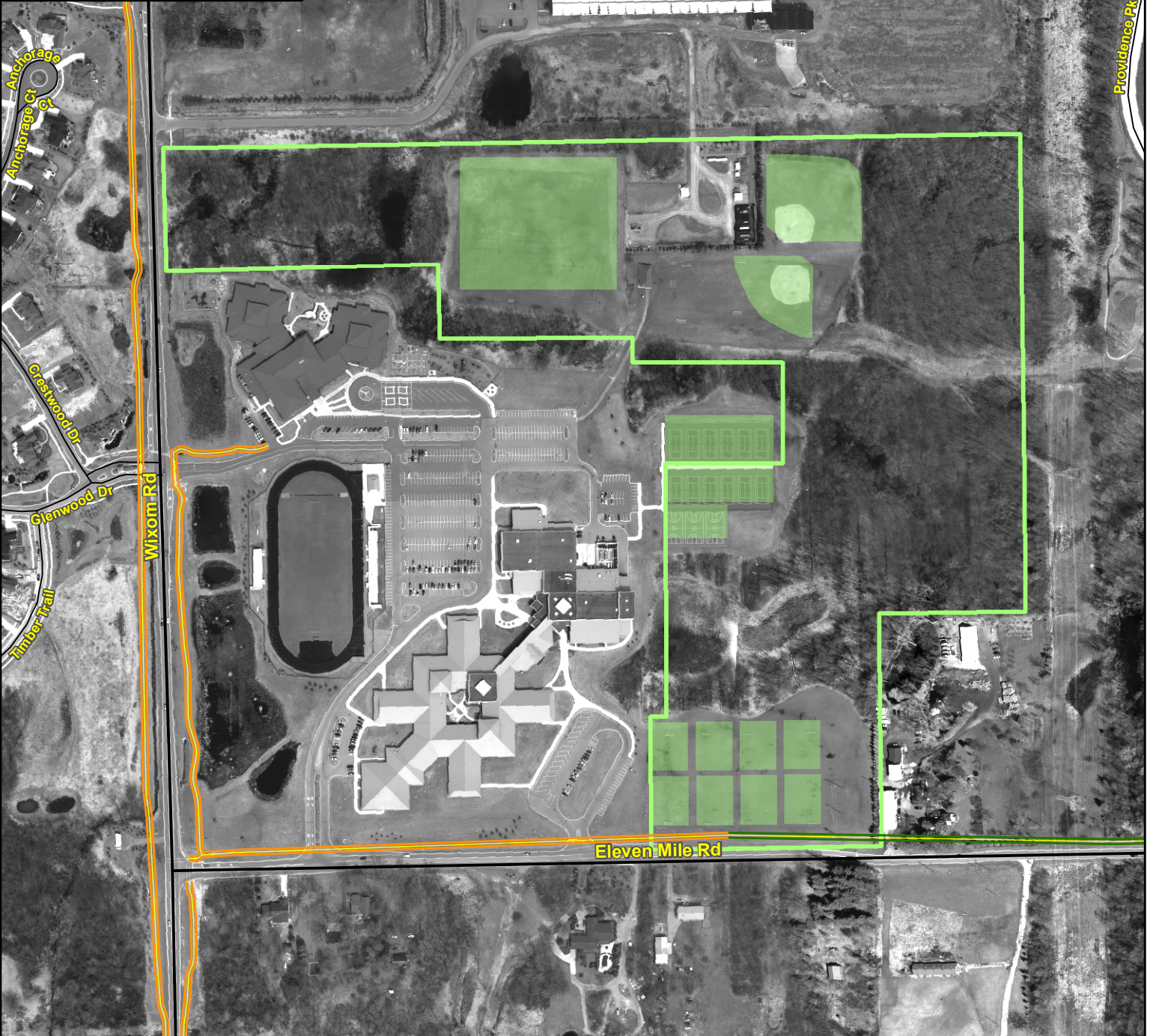
WILDLIFE WOODS PARK 2010 UPDATE PATHWAY AND SIDEWALK PRIORITIZATION ANALYSIS AND PROCESS

Legend

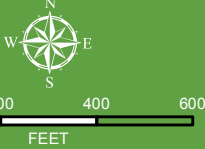
-  Pathway
-  Sidewalk
-  Area Facilities
-  Park Boundary



**CITY OF
NOVI**
cityofnovi.org



CITY OF NOVI
DEPARTMENT OF COMMUNITY DEVELOPMENT
45175 W. TEN MILE ROAD
NOVI, MI 48375-3024
(248) 347-0415
MAP AUTHOR: CHRIS BLOUGH,
GIS MANAGER



0 100 200 400 600
FEET
1 INCH = 400 FEET
MAP PRINT DATE: 11/10/2010

MAP INTERPRETATION NOTICE
Map information depicted is not intended to replace or substitute for any official or primary source. This map was intended to meet National Map Accuracy Standards and use the most recent, accurate sources available to the people of the City of Novi. Boundary measurements and area calculations are approximate and should not be construed as survey measurements performed by a licensed Michigan Surveyor as defined in Michigan Public Act 132 of 1970 as amended. Please contact the City GIS Manager to confirm source and accuracy information related to this map.