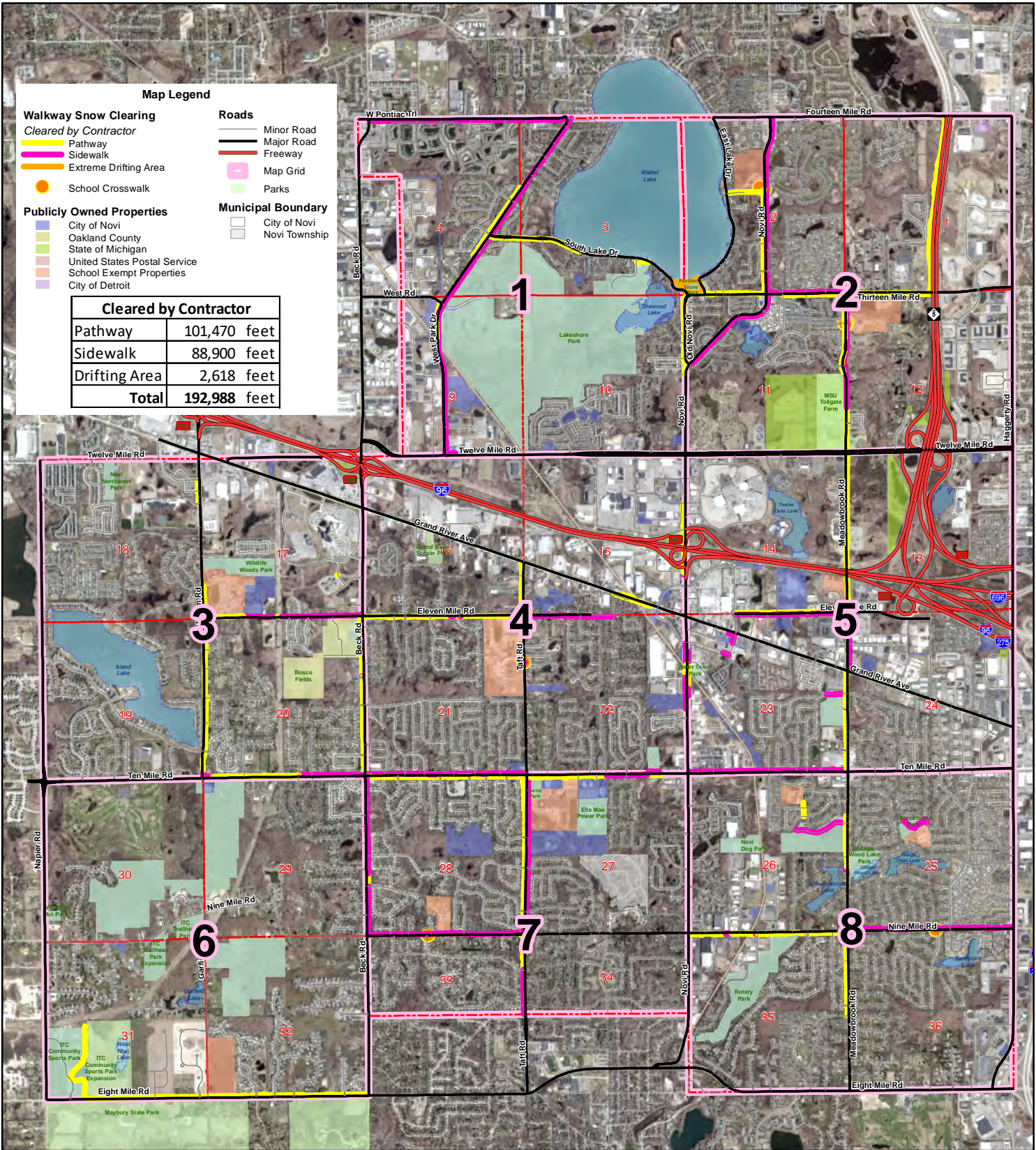


2024-2025 City of Novi Contractor Sidewalk Snow Clearing Map Book



Map Legend

Walkway Snow Clearing
 Cleared by Contractor
 Pathway
 Sidewalk
 Extreme Drifting Area
 School Crosswalk

Roads
 Minor Road
 Major Road
 Freeway
 Map Grid
 Parks

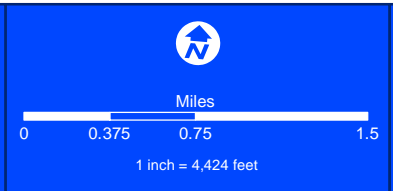
Publicly Owned Properties
 City of Novi
 Oakland County
 State of Michigan
 United States Postal Service
 School Exempt Properties
 City of Detroit

Municipal Boundary
 City of Novi
 Novi Township

Cleared by Contractor	
Pathway	101,470 feet
Sidewalk	88,900 feet
Drifting Area	2,618 feet
Total	192,988 feet

MAP INTERPRETATION NOTICE

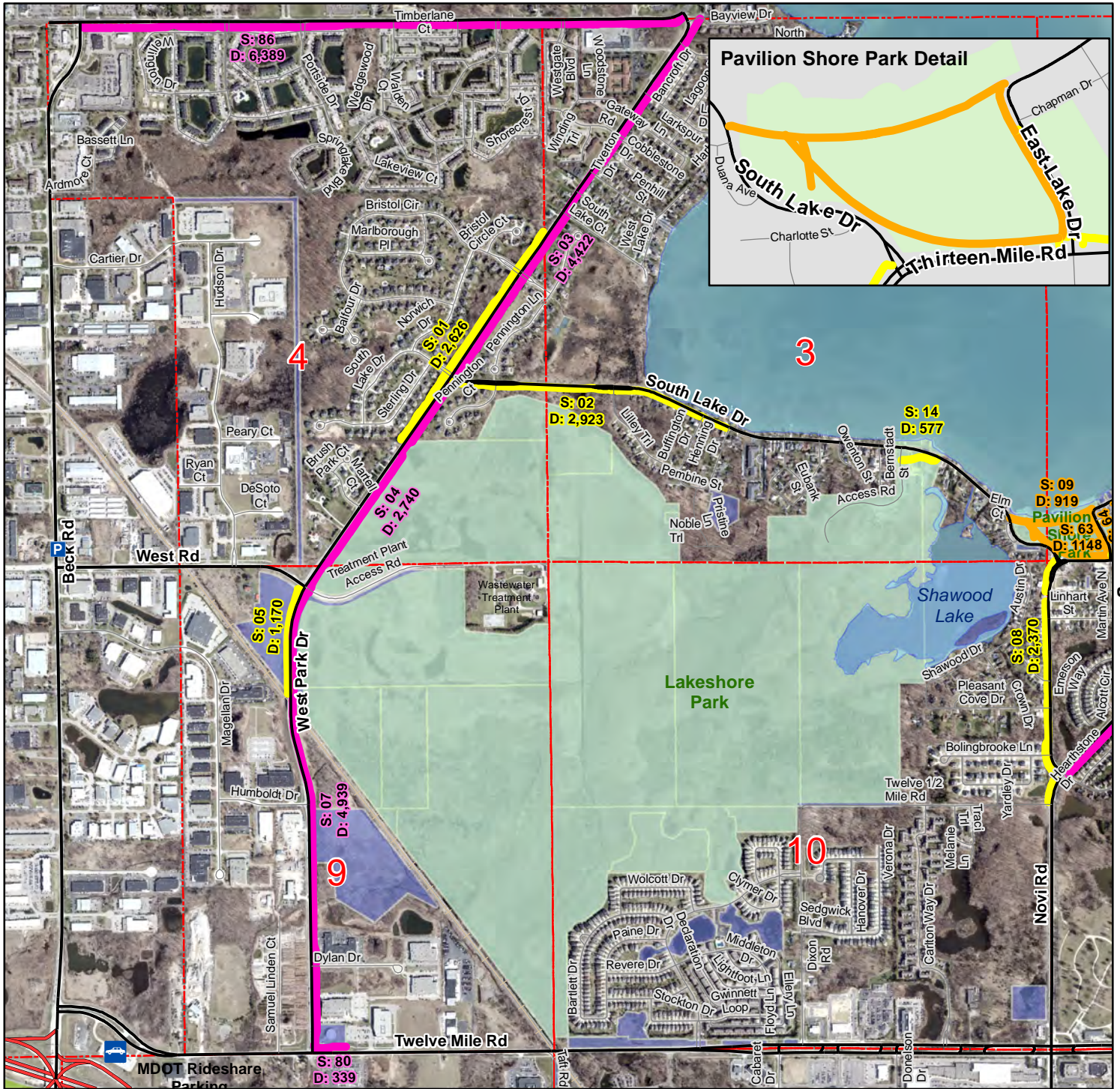
Map information depicted is not intended to replace or substitute for any official or primary source. This map was intended to meet National Map Accuracy Standards and use the most recent, accurate sources available to the people of the City of Novi. Boundary measurements and area calculations are approximate and should not be construed as survey measurements performed by a licensed Michigan Surveyor as defined in Michigan Public Act 132 of 1970 as amended. Please contact the City GIS Manager to confirm source and accuracy information related to this map.



Map Author: Keri Blough
 Date: September 23, 2024
 Project: Winter Sidewalk Snow Clearing
 Version: 1.0

City of Novi
 Integrated Solutions Team
 Geospatial Resources Division
 45175 Ten Mile Rd
 Novi, MI 48375
 cityofnovi.org

2024-2025 City of Novi Contractor Sidewalk Snow Clearing Map Detail 1



See Page 4

See Page 2

Map Author: Jon Gartha
 Date: September 30, 2024
 Project: Winter Sidewalk Snow Clearing
 Version: 1.0

MAP INTERPRETATION NOTICE
 Map information depicted is not intended to replace or substitute for any official or primary source. This map was intended to meet National Map Accuracy Standards and use the most recent, accurate sources available to the people of the City of Novi. Boundary measurements and area calculations are approximate and should not be construed as survey measurements performed by a licensed Michigan Surveyor as defined in Michigan Public Act 132 of 1970 as amended. Please contact the City GIS Manager to confirm source and accuracy information related to this map.

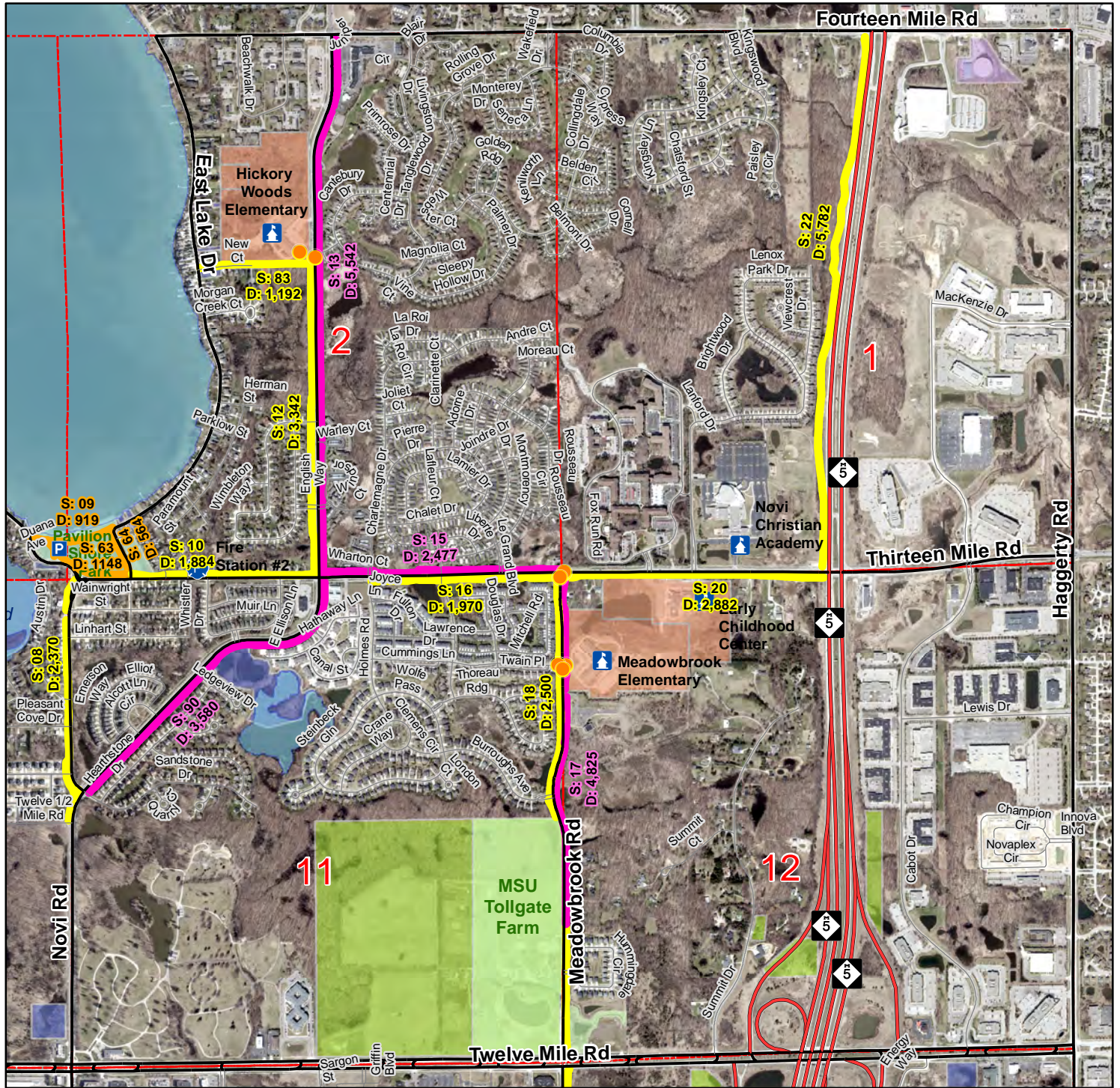
Map Legend

<p>Walkway Snow Clearing Cleared by Contractor</p> <ul style="list-style-type: none"> █ Pathway █ Sidewalk █ Extreme Drifting Area ● School Crosswalk <p>Roads</p> <ul style="list-style-type: none"> — Minor Road — Major Road — Freeway 	<p>Publicly Owned Properties</p> <ul style="list-style-type: none"> █ City of Novi █ Oakland County █ State of Michigan █ United States Postal Service █ School Exempt Properties █ City of Detroit <p>Municipal Boundary</p> <ul style="list-style-type: none"> City of Novi Novi Township
---	--

CITY OF NOVI
 City of Novi
 Integrated Solutions Team
 Geospatial Resources Division
 45175 Ten Mile Rd
 Novi, MI 48375
 cityofnovi.org

Scale:
 0 0.1 0.2 0.4 Miles
 1 inch = 1,550 feet

2024-2025 City of Novi Contractor Sidewalk Snow Clearing Map Detail 2

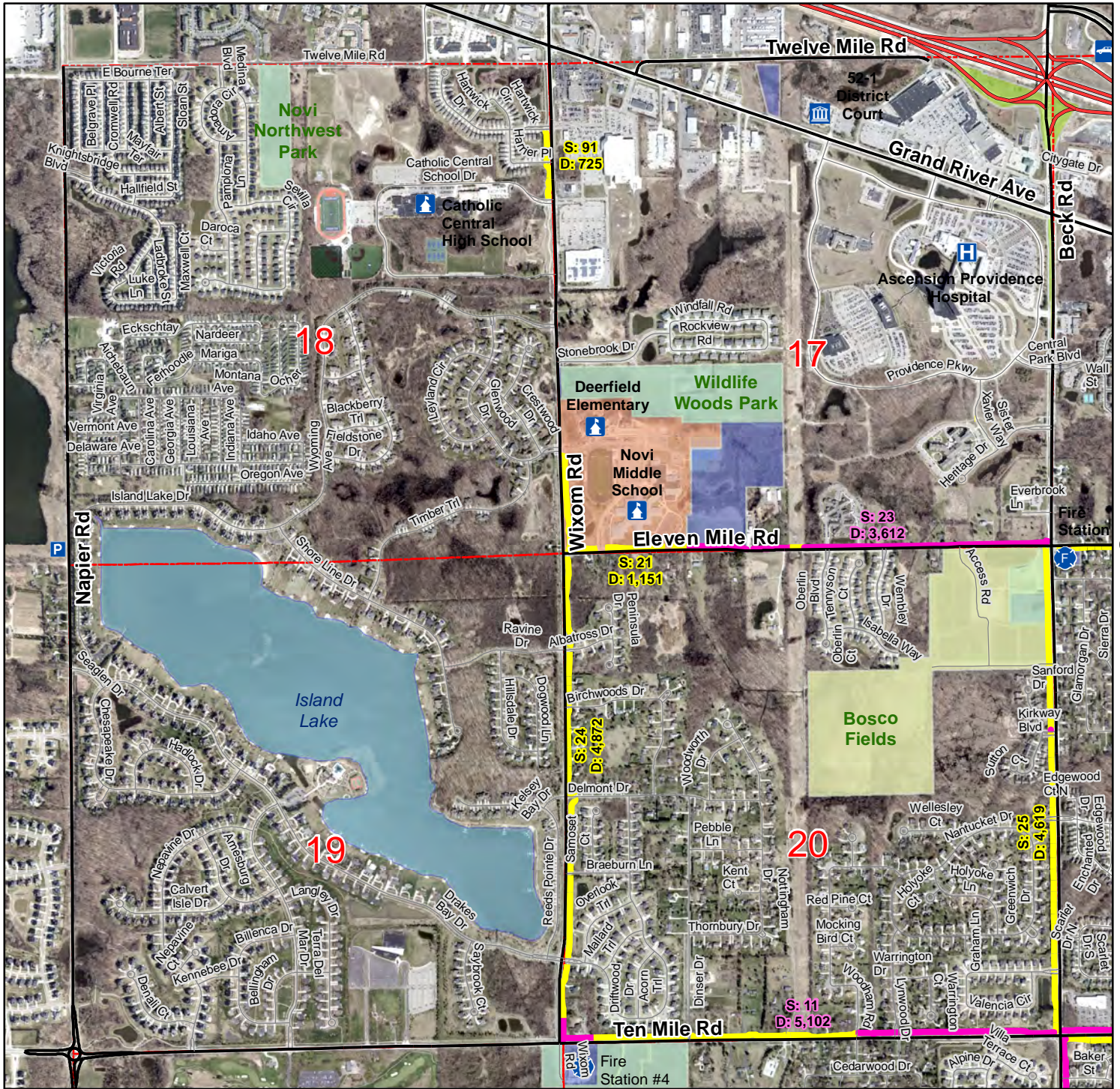


See Page 1

See Page 4

<p>Map Author: Jon Gartha Date: September 30, 2024 Project: Winter Sidewalk Snow Clearing Version: 1.0</p> <p>MAP INTERPRETATION NOTICE</p> <p>Map information depicted is not intended to replace or substitute for any official or primary source. This map was intended to meet National Map Accuracy Standards and use the most recent, accurate sources available to the people of the City of Novi. Boundary measurements and area calculations are approximate and should not be construed as survey measurements performed by a licensed Michigan Surveyor as defined in Michigan Public Act 132 of 1970 as amended. Please contact the City GIS Manager to confirm source and accuracy information related to this map.</p>	<p>Map Legend</p> <table border="0"> <tr> <td> <p>Walkway Snow Clearing</p> <p><i>Cleared by Contractor</i></p> <ul style="list-style-type: none"> — Pathway — Sidewalk — Extreme Drifting Area ● School Crosswalk <p>Roads</p> <ul style="list-style-type: none"> — Minor Road — Major Road — Freeway </td> <td> <p>Publicly Owned Properties</p> <ul style="list-style-type: none"> ■ City of Novi ■ Oakland County ■ State of Michigan ■ United States Postal Service ■ School Exempt Properties ■ City of Detroit <p>Municipal Boundary</p> <ul style="list-style-type: none"> City of Novi Novi Township </td> </tr> </table>	<p>Walkway Snow Clearing</p> <p><i>Cleared by Contractor</i></p> <ul style="list-style-type: none"> — Pathway — Sidewalk — Extreme Drifting Area ● School Crosswalk <p>Roads</p> <ul style="list-style-type: none"> — Minor Road — Major Road — Freeway 	<p>Publicly Owned Properties</p> <ul style="list-style-type: none"> ■ City of Novi ■ Oakland County ■ State of Michigan ■ United States Postal Service ■ School Exempt Properties ■ City of Detroit <p>Municipal Boundary</p> <ul style="list-style-type: none"> City of Novi Novi Township 	<p>City of Novi</p> <p>Integrated Solutions Team Geospatial Resources Division 45175 Ten Mile Rd Novi, MI 48375 cityofnovi.org</p> <p>NOVI cityofnovi.org</p> <p>Miles 0 0.1 0.2 0.4 1 inch = 1,550 feet</p>
<p>Walkway Snow Clearing</p> <p><i>Cleared by Contractor</i></p> <ul style="list-style-type: none"> — Pathway — Sidewalk — Extreme Drifting Area ● School Crosswalk <p>Roads</p> <ul style="list-style-type: none"> — Minor Road — Major Road — Freeway 	<p>Publicly Owned Properties</p> <ul style="list-style-type: none"> ■ City of Novi ■ Oakland County ■ State of Michigan ■ United States Postal Service ■ School Exempt Properties ■ City of Detroit <p>Municipal Boundary</p> <ul style="list-style-type: none"> City of Novi Novi Township 			

2024-2025 City of Novi Contractor Sidewalk Snow Clearing Map Detail 3



See Page 4

See Page 6

Map Author: Jon Gartha
 Date: September 30, 2024
 Project: Winter Sidewalk Snow Clearing
 Version: 1.0

MAP INTERPRETATION NOTICE
 Map information depicted is not intended to replace or substitute for any official or primary source. This map was intended to meet National Map Accuracy Standards and use the most recent, accurate sources available to the people of the City of Novi. Boundary measurements and area calculations are approximate and should not be construed as survey measurements performed by a licensed Michigan Surveyor as defined in Michigan Public Act 132 of 1970 as amended. Please contact the City GIS Manager to confirm source and accuracy information related to this map.

Map Legend

<p>Walkway Snow Clearing</p> <p>Cleared by Contractor</p> <ul style="list-style-type: none"> — Pathway — Sidewalk ● School Crosswalk <p>Roads</p> <ul style="list-style-type: none"> — Minor Road — Major Road — Freeway 	<p>Publicly Owned Properties</p> <ul style="list-style-type: none"> ■ City of Novi ■ Oakland County ■ State of Michigan ■ United States Postal Service ■ School Exempt Properties ■ City of Detroit <p>Municipal Boundary</p> <ul style="list-style-type: none"> City of Novi Novi Township
---	---



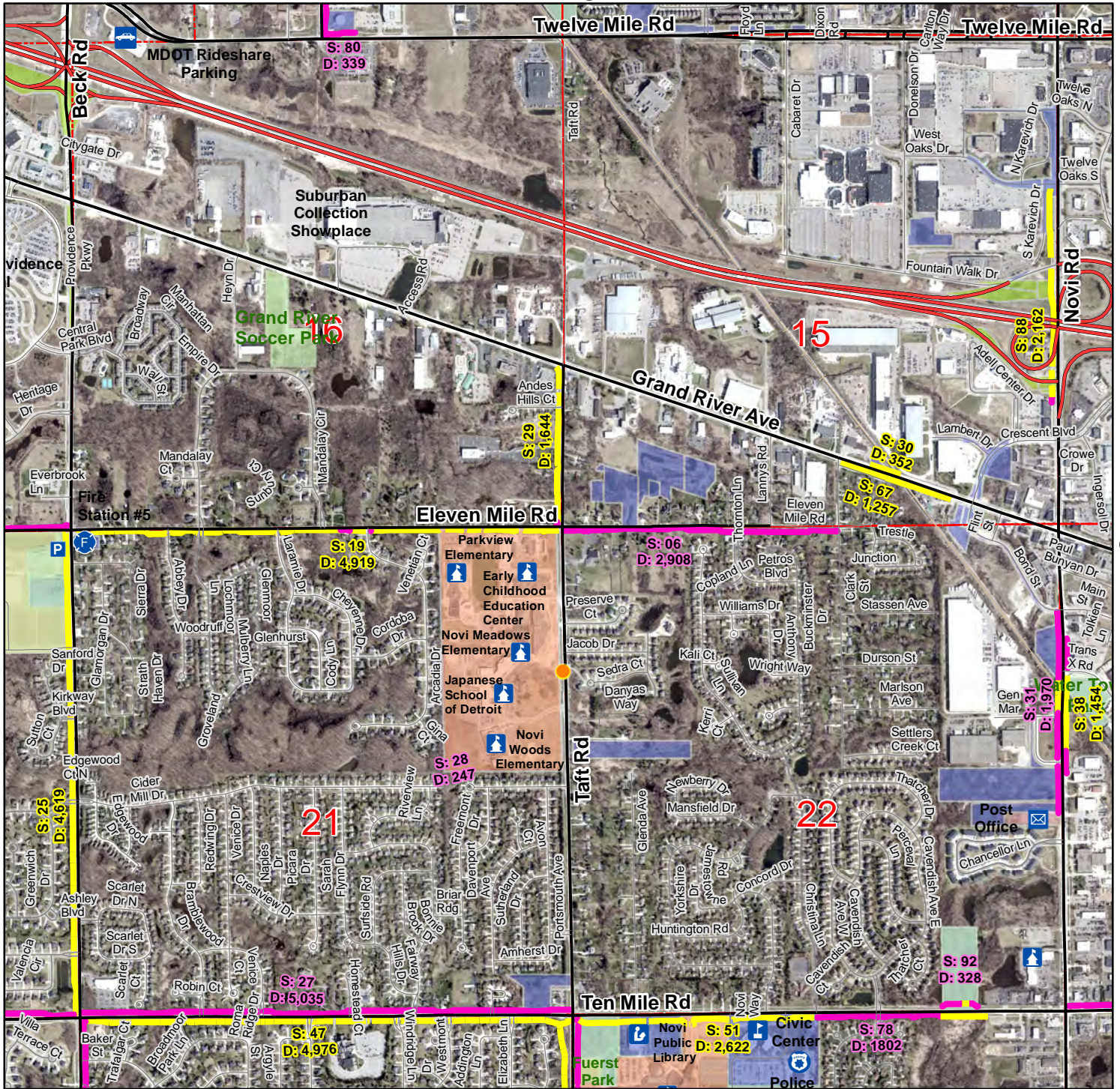
City of Novi
 Integrated Solutions Team
 Geospatial Resources Division
 45175 Ten Mile Rd
 Novi, MI 48375
 cityofnovi.org

Miles
 0 0.1 0.2 0.4
 1 inch = 1,550 feet





2024-2025 City of Novi Contractor Sidewalk Snow Clearing Map Detail 4

See Page 1

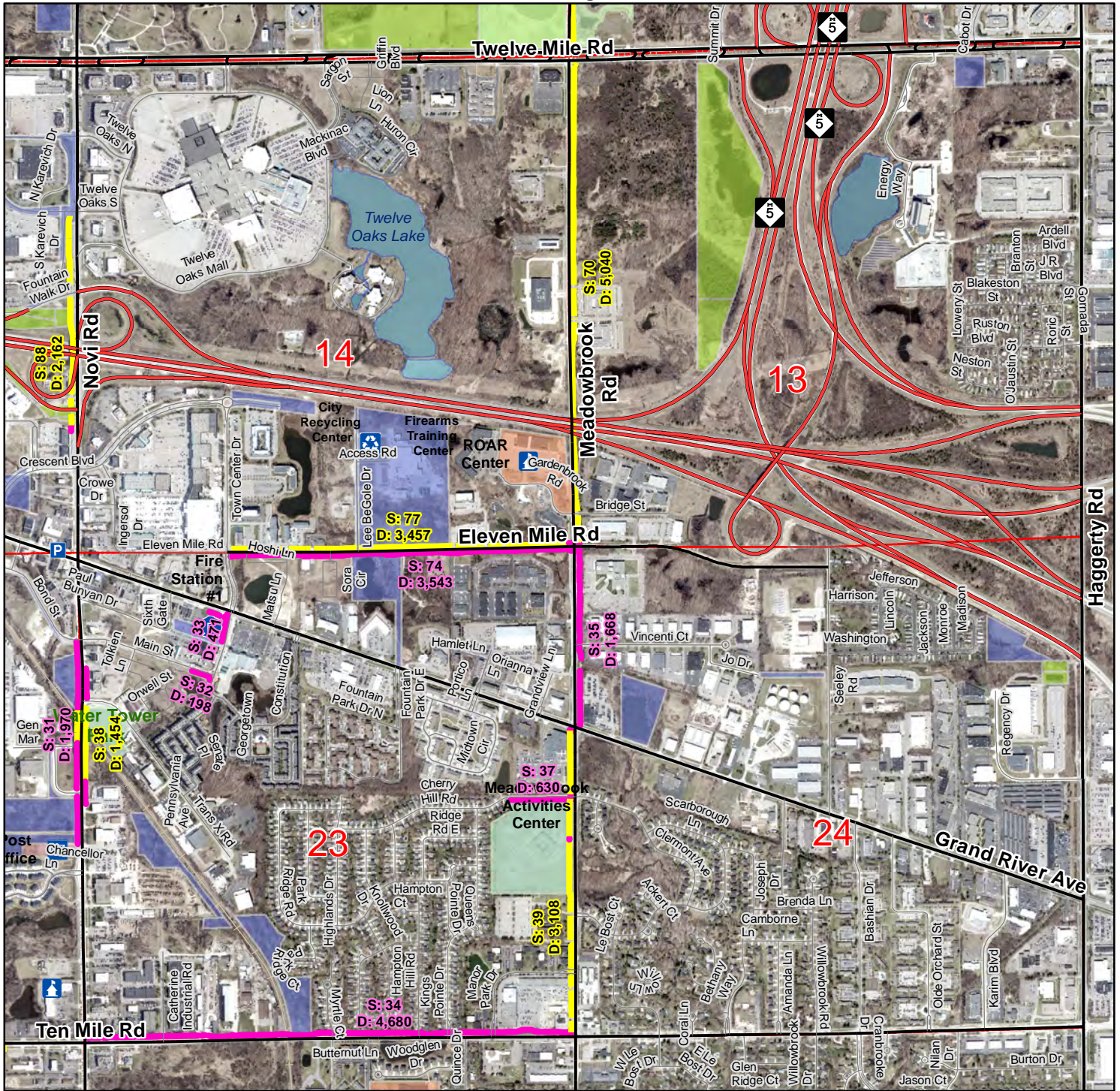


See Page 7

<p>Map Author: Jon Gartha Date: September 30, 2024 Project: Winter Sidewalk Snow Clearing Version: 1.0</p>	<h3>Map Legend</h3> <table border="0"> <tr> <td>Walkway Snow Clearing</td> <td>Publicly Owned Properties</td> </tr> <tr> <td>Cleared by Contractor</td> <td>City of Novi</td> </tr> <tr> <td>Pathway</td> <td>Oakland County</td> </tr> <tr> <td>Sidewalk</td> <td>State of Michigan</td> </tr> <tr> <td>School Crosswalk</td> <td>United States Postal Service</td> </tr> <tr> <td></td> <td>School Exempt Properties</td> </tr> <tr> <td></td> <td>City of Detroit</td> </tr> <tr> <td>Roads</td> <td>Municipal Boundary</td> </tr> <tr> <td>Minor Road</td> <td>City of Novi</td> </tr> <tr> <td>Major Road</td> <td>Novi Township</td> </tr> <tr> <td>Freeway</td> <td></td> </tr> </table>	Walkway Snow Clearing	Publicly Owned Properties	Cleared by Contractor	City of Novi	Pathway	Oakland County	Sidewalk	State of Michigan	School Crosswalk	United States Postal Service		School Exempt Properties		City of Detroit	Roads	Municipal Boundary	Minor Road	City of Novi	Major Road	Novi Township	Freeway		 <p>City of Novi Integrated Solutions Team Geospatial Resources Division 45175 Ten Mile Rd Novi, MI 48375 cityofnovi.org</p> <p>Miles 0 0.1 0.2 0.4 1 inch = 1,556 feet</p> 
Walkway Snow Clearing	Publicly Owned Properties																							
Cleared by Contractor	City of Novi																							
Pathway	Oakland County																							
Sidewalk	State of Michigan																							
School Crosswalk	United States Postal Service																							
	School Exempt Properties																							
	City of Detroit																							
Roads	Municipal Boundary																							
Minor Road	City of Novi																							
Major Road	Novi Township																							
Freeway																								




2024-2025 City of Novi Contractor Sidewalk Snow Clearing Map Detail 5

See Page 2



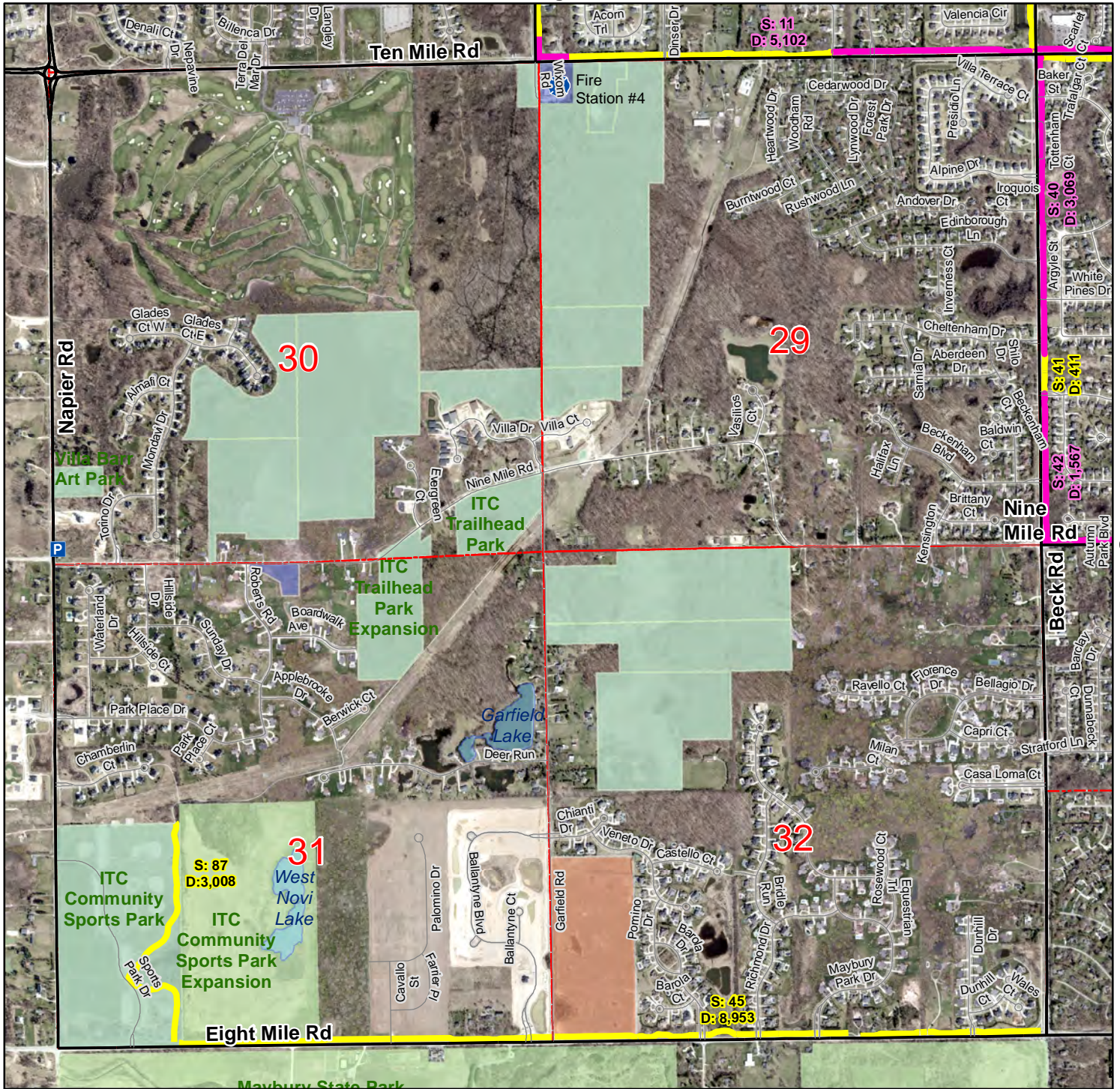
See Page 4

See Page 8

<p>Map Author: Jon Gartha Date: September 30, 2024 Project: Winter Sidewalk Snow Clearing Version: 1.0</p> <p>MAP INTERPRETATION NOTICE</p> <p>Map information depicted is not intended to replace or substitute for any official or primary source. This map was intended to meet National Map Accuracy Standards and use the most recent, accurate sources available to the people of the City of Novi. Boundary measurements and area calculations are approximate and should not be construed as survey measurements performed by a licensed Michigan Surveyor as defined in Michigan Public Act 132 of 1970 as amended. Please contact the City GIS Manager to confirm source and accuracy information related to this map.</p>	<p align="center">Map Legend</p> <table border="0"> <tr> <td> <p>Walkway Snow Clearing</p> <p>Cleared by Contractor</p> <ul style="list-style-type: none"> █ Pathway █ Sidewalk ● School Crosswalk <p>Roads</p> <ul style="list-style-type: none"> — Minor Road — Major Road — Freeway </td> <td> <p>Publicly Owned Properties</p> <ul style="list-style-type: none"> █ City of Novi █ Oakland County █ State of Michigan █ United States Postal Service █ School Exempt Properties █ City of Detroit <p>Municipal Boundary</p> <ul style="list-style-type: none"> City of Novi Novi Township </td> </tr> </table>	<p>Walkway Snow Clearing</p> <p>Cleared by Contractor</p> <ul style="list-style-type: none"> █ Pathway █ Sidewalk ● School Crosswalk <p>Roads</p> <ul style="list-style-type: none"> — Minor Road — Major Road — Freeway 	<p>Publicly Owned Properties</p> <ul style="list-style-type: none"> █ City of Novi █ Oakland County █ State of Michigan █ United States Postal Service █ School Exempt Properties █ City of Detroit <p>Municipal Boundary</p> <ul style="list-style-type: none"> City of Novi Novi Township 	<div style="text-align: right;">  <p>City of Novi</p> <p>Integrated Solutions Team Geospatial Resources Division 45175 Ten Mile Rd Novi, MI 48375 cityofnovi.org</p> </div> <div style="text-align: center;"> <p>Miles</p>  <p>1 inch = 1,550 feet</p>  </div>
<p>Walkway Snow Clearing</p> <p>Cleared by Contractor</p> <ul style="list-style-type: none"> █ Pathway █ Sidewalk ● School Crosswalk <p>Roads</p> <ul style="list-style-type: none"> — Minor Road — Major Road — Freeway 	<p>Publicly Owned Properties</p> <ul style="list-style-type: none"> █ City of Novi █ Oakland County █ State of Michigan █ United States Postal Service █ School Exempt Properties █ City of Detroit <p>Municipal Boundary</p> <ul style="list-style-type: none"> City of Novi Novi Township 			

2024-2025 City of Novi Contractor Sidewalk Snow Clearing Map Detail 6

See Page 3



See Page 7

Map Author: Jon Gartha
 Date: September 30, 2024
 Project: Winter Sidewalk Snow Clearing
 Version: 1.0

MAP INTERPRETATION NOTICE
 Map information depicted is not intended to replace or substitute for any official or primary source. This map was intended to meet National Map Accuracy Standards and use the most recent, accurate sources available to the people of the City of Novi. Boundary measurements and area calculations are approximate and should not be construed as survey measurements performed by a licensed Michigan Surveyor as defined in Michigan Public Act 132 of 1970 as amended. Please contact the City GIS Manager to confirm source and accuracy information related to this map.

<p>Walkway Snow Clearing Cleared by Contractor</p> <ul style="list-style-type: none"> — Pathway — Sidewalk — Extreme Drifting Area ● School Crosswalk <p>Roads</p> <ul style="list-style-type: none"> — Minor Road — Major Road — Freeway 	<p>Publicly Owned Properties</p> <ul style="list-style-type: none"> ■ City of Novi ■ Oakland County ■ State of Michigan ■ United States Postal Service ■ School Exempt Properties ■ City of Detroit <p>Municipal Boundary</p> <ul style="list-style-type: none"> City of Novi Novi Township
---	---

City of Novi

Integrated Solutions Team
 Geospatial Resources Division
 45175 Ten Mile Rd
 Novi, MI 48375
cityofnovi.org

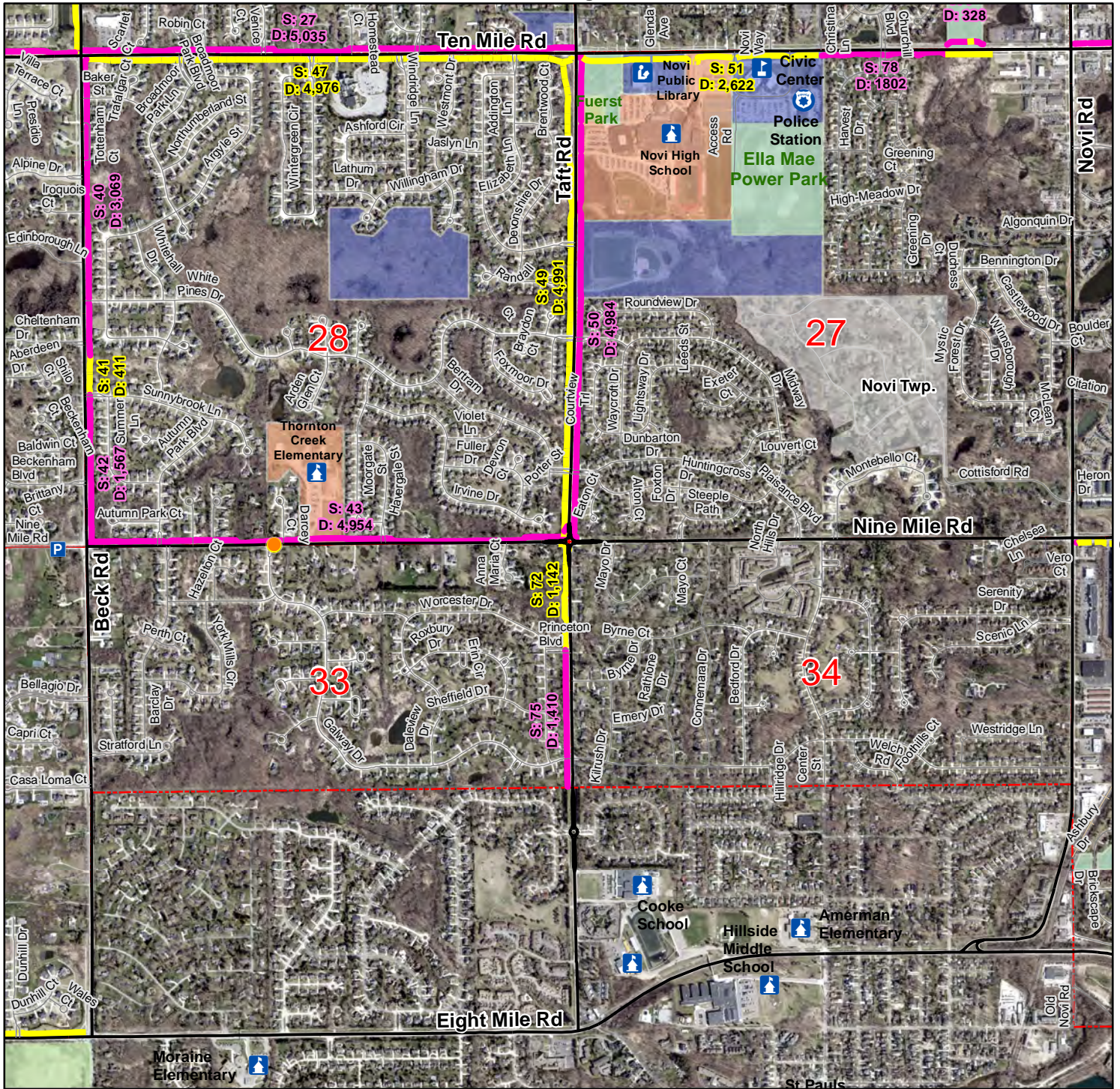
Miles

0 0.1 0.2 0.4

1 inch = 1,550 feet

2024-2025 City of Novi Contractor Sidewalk Snow Clearing Map Detail 7

See Page 4



See Page 6


See Page 8

Map Author: Jon Gartha
 Date: September 30, 2024
 Project: Winter Sidewalk Snow Clearing
 Version: 1.0

MAP INTERPRETATION NOTICE
 Map information depicted is not intended to replace or substitute for any official or primary source. This map was intended to meet National Map Accuracy Standards and use the most recent, accurate sources available to the people of the City of Novi. Boundary measurements and area calculations are approximate and should not be construed as survey measurements performed by a licensed Michigan Surveyor as defined in Michigan Public Act 132 of 1970 as amended. Please contact the City GIS Manager to confirm source and accuracy information related to this map.


Map Legend

<p>Walkway Snow Clearing Cleared by Contractor</p> <ul style="list-style-type: none"> — Pathway — Sidewalk ● School Crosswalk <p>Roads</p> <ul style="list-style-type: none"> — Minor Road — Major Road — Freeway 	<p>Publicly Owned Properties</p> <ul style="list-style-type: none"> ■ City of Novi ■ Oakland County ■ State of Michigan ■ United States Postal Service ■ School Exempt Properties ■ City of Detroit <p>Municipal Boundary</p> <ul style="list-style-type: none"> City of Novi Novi Township
--	---



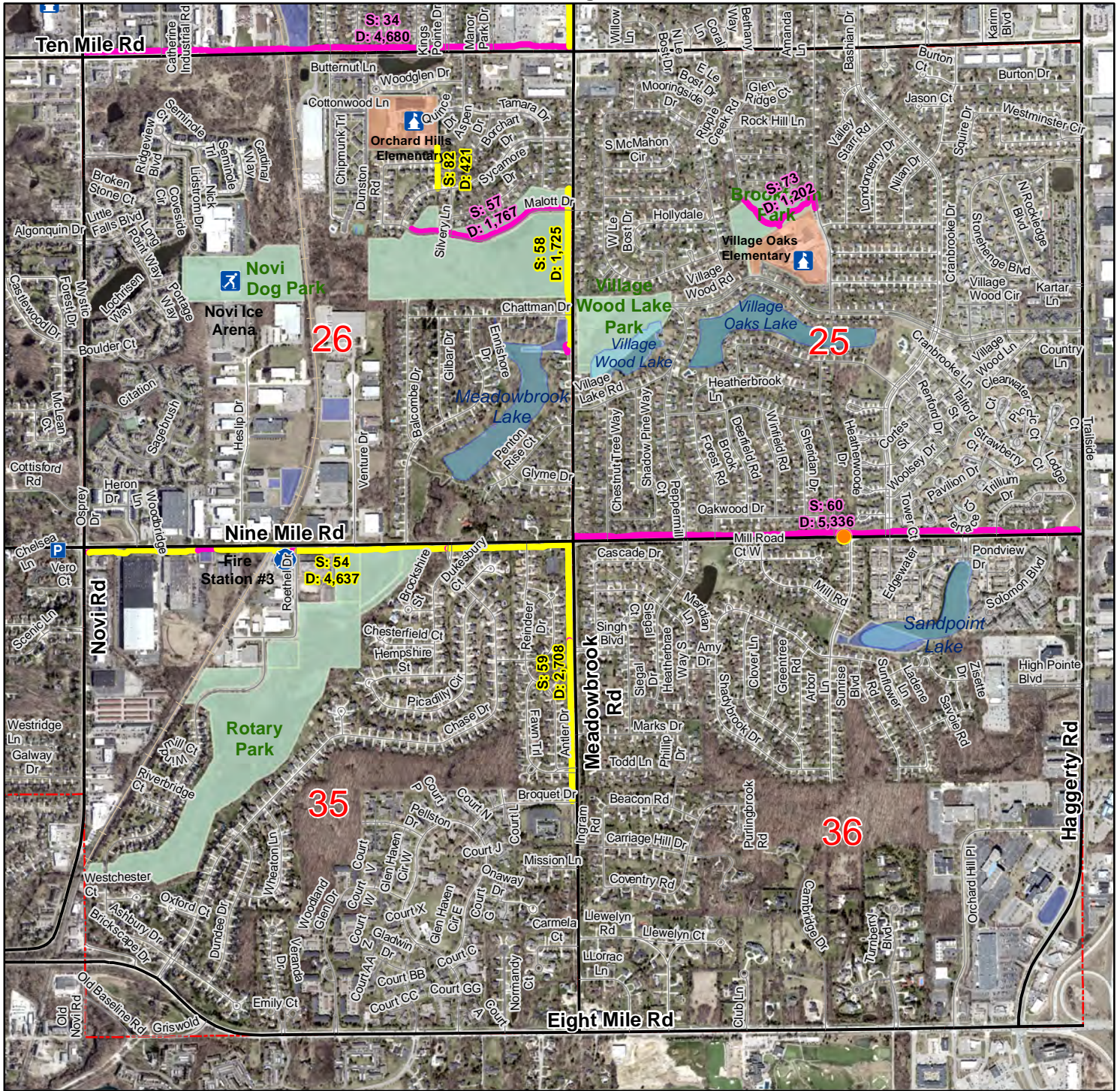
City of Novi
 Integrated Solutions Team
 Geospatial Resources Division
 45175 Ten Mile Rd
 Novi, MI 48375
cityofnovi.org

Miles
 0 0.1 0.2 0.4
 1 inch = 1,550 feet



2024-2025 City of Novi Contractor Sidewalk Snow Clearing Map Detail 8

See Page 5



See Page 7

Map Author: Jon Gartha
 Date: September 30, 2024
 Project: Winter Sidewalk Snow Clearing
 Version: 1.0

MAP INTERPRETATION NOTICE

Map information depicted is not intended to replace or substitute for any official or primary source. This map was intended to meet National Map Accuracy Standards and use the most recent, accurate sources available to the people of the City of Novi. Boundary measurements and area calculations are approximate and should not be construed as survey measurements performed by a licensed Michigan Surveyor as defined in Michigan Public Act 132 of 1970 as amended. Please contact the City GIS Manager to confirm source and accuracy information related to this map.

Map Legend

Walkway Snow Clearing Cleared by Contractor

- █ Pathway
- █ Sidewalk
- █ Extreme Drifting Area
- School Crosswalk

Roads

- Minor Road
- Major Road
- Freeway

Publicly Owned Properties

- █ City of Novi
- █ Oakland County
- █ State of Michigan
- █ United States Postal Service
- █ School Exempt Properties
- █ City of Detroit

Municipal Boundary

- City of Novi
- Novi Township



City of Novi

Integrated Solutions Team
 Geospatial Resources Division
 45175 Ten Mile Rd
 Novi, MI 48375
 cityofnovi.org

