

Catalog Number	Type
Notes	



GVD3
Granville Classic Standard LED3

SPECIFICATIONS

General Description

The Granville Classic Standard LED3 is designed for use with traditional applications fitting 3 post top tenons. The traditional acorn-shaped luminaire, while reminiscent of the 1920's, contains a powerful, slant-mounted Chip-On-Board LED platform with a precision optical system that maintains post spacing while maintaining uniform illumination.

Mechanical Specifications

- The luminaire housing shall:
 - Be heavy grade 6061 cast aluminum (aluminum with <1% copper)
 - IP53 rated housing provides enclosure for the electrical module
 - Mount to slip-fitter that will accept 7/8" high by 2-1/8" to 3-1/8" O.D. pole tenon
 - Provide four uniquely designed stainless steel spring clips, enclosed in a clear polyvinyl chloride sleeve and adjusted by 1/4-20 hex head bolts that securely cradle the prismatic acrylic refractor. The same 1/4-20 bolts also support the decorative rib and banding assembly. The finish shall:
 - Utilize a protective power coat paint to ensure maximum durability
 - Rigorous multi-stage pre-treating and painting process yields a finish that achieves a scribe coverage rating of 8 (per ASTM D1654) after over 5000 hours exposure to salt fog chamber (operated per ASTM B117) on standard and RAL finish options.
 - RAL (RALxxxx/000) paint colors are Super Durable Corrosion Resistant, 80% gloss.

Electrical Specifications

The driver shall meet the following requirements:

- Be certified UL or CSA for wet locations
- Factory programmable electronic driver with 0-10V dimming control lead
- LEDs shall have a minimum of 70,000 hours and available in 2700K, 3000K, 4000K, and 5000K CCT
- The electrical system shall be designed to meet ANSI/IEEE C62.41.2 and shall offer a 10kV/3BA surge protection, full UL, and standard with an upgradable 20kV/10kA surge protection, full UL with indicator light, option
- Lumen output can be customized prior to manufacturing by way of FP90x Optimum
- The electrical components are mounted on an aluminum plate that is removable with minimum use of tools.

Optical Specifications

The optical system is IP65 rated and consists of a precisely molded thermal resistant borosilicate glass refractor and top reflector mounted within the decorative glass optic. The top reflector reflects over 50% of the upward light into the controlling refractor while allowing a soft up-light component to define the traditional acorn shape of the luminaire. The lower refractor uses precisely molded prisms to maximize the pole spacing while maintaining uniform illumination. Two refractors are available, designed for 85 type III and IV distributions. Linear optic shielding is available for asymmetric and symmetric distributions.

Control Options

The control system shall include, but not be limited to, the following:

- Three (3) choices of button-style photocell kits specified to match voltage requirements: 120V, 208-277V, or 347V, and colored to match housing finish (480V kit not available).
- Luminaire shall be UL or CSA listed.
- Suitable for operation in an ambient temperature up to 40°C / 105°F per UL or CSA certification
- LMV compliant
- DesignLight Consortium™ (DLC) Premium qualified product and DLC qualified product. Not all versions of this product may be DLC Premium qualified or DLC qualified. Please check with the DLC Qualified Products List at www.designlightconsortium.com to confirm which versions are qualified.

Buy American

This product is assembled in the USA and meets the Buy American (government procurement requirements under FARs, DFARS and DOT. Please refer to www.acuitybrands.com/usaonly for additional information.

Warranty - 5 Years Limited

Complete warranty terms located at: www.acuitybrands.com/support/warranty/terms-and-conditions

Note: Actual performance may differ as a result of end-user environment and application. All values are design or typical values, measured under laboratory conditions at 25 °C.

HoloPhane | 1825 Cambridge Rd, Columbus, OH 43221 | Phone: 614-290-2998 | sales@holophane.com
© 2020-2021 Acuity Brands Lighting, Inc. All rights reserved. Rev. 04/20/21 | Specifications subject to change without notice.

GENERATION LIGHTING

8592-12: One Light Outdoor Wall Lantern



Dimensions:

Width: 4 1/4"
Height: 8 1/4"
Weight: 1.4 lbs.

Extends: 5 1/2"
Wire: 6 1/2" (color/Black/White)
Mounting Proc: Cap Nuts
Connection: Mounted To Box
Bulb Appearance: Clear

Bulbs:

1 - Medium A19 75w Max. 120v - Not included

Features:

- Clear bulb(s) recommended for this fixture
- Easily converts to LED with optional replacement lamps
- Meets Title 24 energy efficiency standards
- Title 24 compliant if used with Joint Appendix (JA8) approved light bulbs listed in the California Energy Commission Appliance database.

Material List:

1 Body - Aluminum - Black
1 Canopy - Aluminum - Black

Safety Listing:

Safety Listed for Wet Locations
Safety Listed for Wet Locations

Instruction Sheets:

English (HC-231)
French (F-200)

Collection: New Castle

Simple Details Create Stylish Outdoor Wall Lantern, Black Finish and Clear Glass.

Simple details create a stylish outdoor lantern, Black finish and clear glass.

Supplied with 6.5-inches of wire

For an eco-friendly lighting design, convert to LED bulbs to offer savings and reduce energy

Designed for damp and wet environments allowing for direct water contact

1-year manufacturer warranty

The sensibly styled proportions and accents of New Castle make it a versatile selection for your home. Clear bulbs are recommended to use for the best aesthetics.

UPC #: 785652859236

Finish: Black (12)

Shade / Glass / Diffuser Details:

Part	Material	Finish	Quantity	Item Number	Length	Width	Height	Diameter	Filter Diameter	Shade Top Length	Shade Top Width	Shade Top Diameter
Panel	Glass	Clear	4	G500052-32	3.38	4.516						

Backplate / Canopy Details:

Type	Height / Length	Width	Depth	Diameter	Outlet Box Up	Outlet Box Down
Black Plate		2.116	4.12	2.34	5.12	

Shipping Information:

Package Type	Product #	Quantity	UPC	Length	Width	Height	Cube	Weight	Frt. Class	UPS Ship
Individual	8592-12	1	785652859236	6.75	5.75	9	0.202	1.75	100	Yes
Master Pack		6	10785652859233	18	14.5	39.75	1.473	11.7	100	Yes
Kit Pallet		378		48	40	74.5	52.778	542.6		No

Symbol	Label	Quantity	Manufacturer	Catalog Number	Description	Lamp	Number Lamps	Lumens Per Lamp	Light Loss Factor	Wattage	Mounting Height
A		6	HoloPhane	GVD3 PS0 40K XXXX GLSLU RB FC	Granville Gen3, P50 Performance Package, 4000K CCT, 70CRI, Type 5 lunar optic distribution with Ribs and Bands and Full Cover	LED	1	9716	0.5	99	14'-0"
B		570	Generation Brands	8592-12	One light outdoor wall lantern	LED	1	1179	0.9	75	6'-6"
EX1		20	EXISTING	EXISTING	TEARDROP STYLE AREA LIGHT	CONFIRMED BY OTHERS	1	9480	0.5	75	UNKNOWN
EX2		26	EXISTING	EXISTING	TEARDROP STYLE AREA LIGHT	CONFIRMED BY OTHERS	1	9480	0.5	150	UNKNOWN

Statistics							
Description	Symbol	Avg	Max	Min	Max/Min	Avg/Min	Avg/Max
MAIN STREET	+	1.6 fc	3.4 fc	0.2 fc	17.0:1	8.0:1	0.5:1
PHASE 1	+	0.4 fc	5.4 fc	0.0 fc	N/A	N/A	0.1:1
PHASE 2	+	0.5 fc	4.9 fc	0.0 fc	N/A	N/A	0.1:1
PHASE 3	+	0.6 fc	5.3 fc	0.0 fc	N/A	N/A	0.1:1

General Note

- SEE SCHEDULE FOR LUMINAIRE MOUNTING HEIGHT.
- SEE LUMINAIRE SCHEDULE FOR LIGHT LOSS FACTOR.
- CALCULATIONS ARE SHOWN IN FOOTCANDLES AT: 0' - 0"
- HOURS OF OPERATION: 24 HOURS PER DAY & 7 DAYS A WEEK.
- ELECTRICAL SERVICE TO LIGHT FIXTURES SHALL BE PLACED UNDERGROUND.
- FLASHING LIGHT SHALL NOT BE PERMITTED.
- ONLY NECESSARY LIGHTING FOR SECURITY PURPOSES & LIMITED OPERATIONS SHALL BE PERMITTED AFTER A SITE'S HOURS OF OPERATION.

THE ENGINEER AND/OR ARCHITECT MUST DETERMINE APPLICABILITY OF THE LAYOUT TO EXISTING / FUTURE FIELD CONDITIONS. THIS LIGHTING LAYOUT REPRESENTS ILLUMINATION LEVELS CALCULATED FROM LABORATORY DATA TAKEN UNDER CONTROLLED CONDITIONS IN ACCORDANCE WITH ILLUMINATING ENGINEERING SOCIETY APPROVED METHODS. ACTUAL PERFORMANCE OF ANY MANUFACTURER'S LUMINAIRE MAY VARY DUE TO VARIATION IN ELECTRICAL VOLTAGE, TOLERANCE IN LAMPS, AND OTHER VARIABLE FIELD CONDITIONS. MOUNTING HEIGHTS INDICATED ARE FROM GRADE AND/OR FLOOR UP.

THESE LIGHTING CALCULATIONS ARE NOT A SUBSTITUTE FOR INDEPENDENT ENGINEERING ANALYSIS OF LIGHTING SYSTEM SUITABILITY AND SAFETY. THE ENGINEER AND/OR ARCHITECT IS RESPONSIBLE TO REVIEW FOR MICHIGAN ENERGY CODE AND LIGHTING QUALITY COMPLIANCE.

UNLESS EXEMPT, PROJECT MUST COMPLY WITH LIGHTING CONTROLS REQUIREMENTS DEFINED IN ASHRAE 90.1 2013. FOR SPECIFIC INFORMATION CONTACT GBA CONTROLS GROUP AT ASG@GASSERBUSH.COM OR 734-266-6705.

Alternates Note

THE USE OF FIXTURE ALTERNATES MUST BE RESUBMITTED TO THE CITY FOR APPROVAL.

Ordering Note

FOR INQUIRIES CONTACT GASSER BUSH AT QUOTES@GASSERBUSH.COM OR 734-266-6705.

Mounting Height Note

MOUNTING HEIGHT IS MEASURED FROM GRADE TO FACE OF FIXTURE. POLE HEIGHT SHOULD BE CALCULATED AS THE MOUNTING HEIGHT LESS BASE HEIGHT.

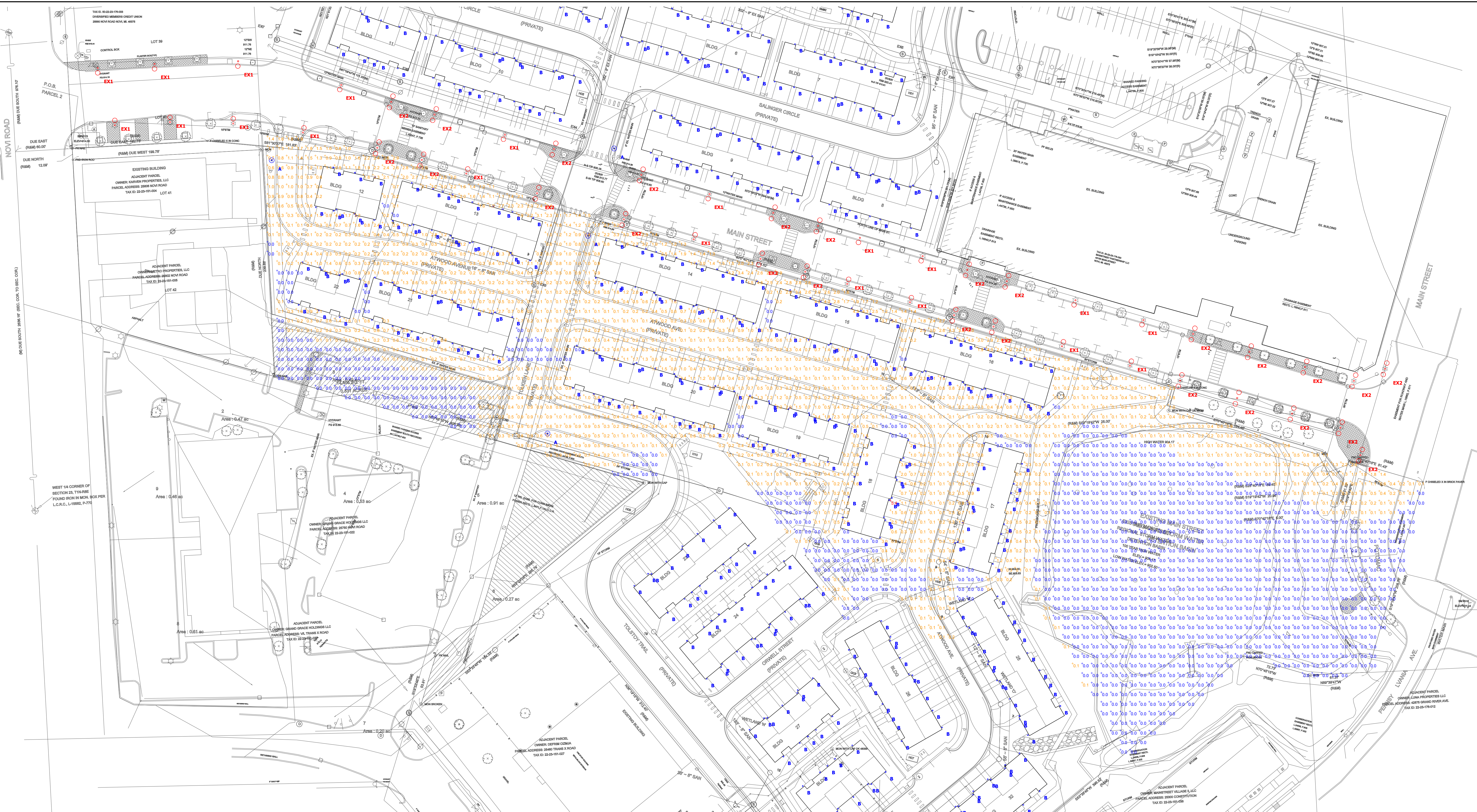
Drawing Note

THIS DRAWING WAS GENERATED FROM AN ELECTRONIC IMAGE FOR ESTIMATION PURPOSE ONLY. LAYOUT TO BE VERIFIED IN FIELD BY OTHERS.



Plan View
Scale - 1" = 80ft





Plan View
Scale - 1" = 50ft

Schedule										
Symbol	Label	Manufacturer	Catalog Number	Description	Lamp	Number Lamps	Lumens Per Lamp	Light Loss Factor	Wattage	Mounting Height
	A	Holophane	GVD3 P50 40K XXXX GLSLU Rib FC	GranVite Gen3, P50 Performance Package, 4000K CCT, 70CRI, Type 5 lunar optic distribution with Ribs and Bands and Full Cover	LED	1	9716	0.9	99	14'-0"
	B	Generation Brands	8592-12	One light outdoor wall lantern	LED	1	1179	0.9	75	6'-6"
	EX1	EXISTING	EXISTING	TEARDROP STYLE AREA LIGHT	CONFIRMED BY OTHERS	1	9480	0.5	75	UNKNOWN
	EX2	EXISTING	EXISTING	TEARDROP STYLE AREA LIGHT	CONFIRMED BY OTHERS	1	9480	0.5	150	UNKNOWN

Statistics							
Description	Symbol	Avg	Max	Min	Max/Min	Avg/Min	Avg/Max
MAIN STREET	+	1.6 fc	3.4 fc	0.2 fc	17.0:1	8.0:1	0.5:1
PHASE 1	+	0.4 fc	5.4 fc	0.0 fc	N/A	N/A	0.1:1